

Product datasheet for **TA600080**

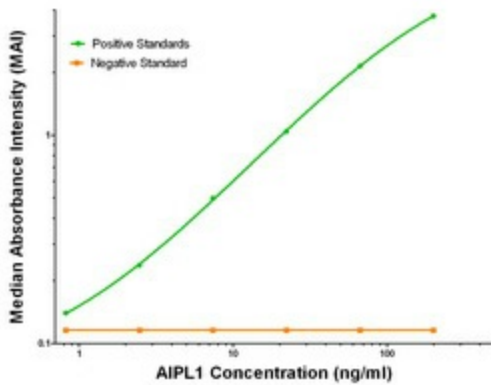
AIPL1 Mouse Monoclonal Capture Antibody [Clone ID: OTI3B4]

Product data:

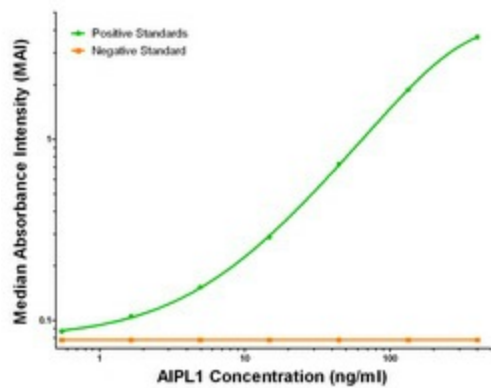
Product Type:	Primary Antibodies
Clone Name:	OTI3B4
Applications:	ELISA, LMNX
Recommended Dilution:	1:100 - 1:1000
Reactivity:	Human, Mouse, Rat
Host:	Mouse
Isotype:	IgG1
Clonality:	Monoclonal
Immunogen:	Full length human recombinant protein of human AIPL1 (NP_055151) produced in HEK293T cell.
Formulation:	Stored in PBS (pH 7.4) containing 0.05% sodium azide and up to 5% trehalose
Concentration:	0.5 mg/ml
Conjugation:	Unconjugated
Storage:	Store at -20°C. Avoid repeat freeze/thaw cycles.
Stability:	Stable for 12 months from date of receipt.
Gene Name:	aryl hydrocarbon receptor interacting protein like 1
Database Link:	NP_055151 Entrez Gene 59110 Rat Entrez Gene 114230 Mouse Entrez Gene 23746 Human Q9NZN9
Synonyms:	AIPL2; LCA4
Matched ELISA Pair:	TA700079, TA700131
Protein Families:	Druggable Genome



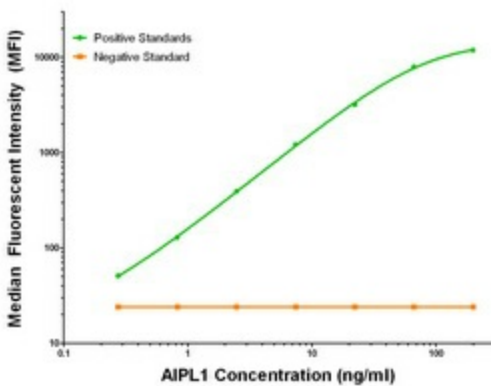
[View online »](#)

Product images:


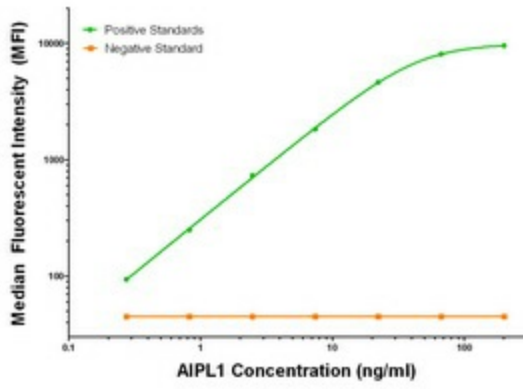
AIPL1 ELISA with 3B4 Capture (TA600080) and 2D11 Detection ([TA700079]) Antibodies. Substrate used: Recombinant Human AIPL1 ([TP304079])



AIPL1 ELISA with 3B4 Capture (TA600080) and 2B11 Detection ([TA700131]) Antibodies. Substrate used: Recombinant Human AIPL1 ([TP304079])



AIPL1 Luminex with 3B4 Capture (TA600080) and 2D11 Detection ([TA700079]) Antibodies. Substrate used: Recombinant Human AIPL1 ([TP304079])



AIPL1 Luminex with 3B4 Capture (TA600080) and 2B11 Detection ([TA700131]) Antibodies.
 Substrate used: Recombinant Human AIPL1 (TP304079)