

Product datasheet for **TA600072**

PKC epsilon (PRKCE) Mouse Monoclonal Capture Antibody [Clone ID: OTI1G5]

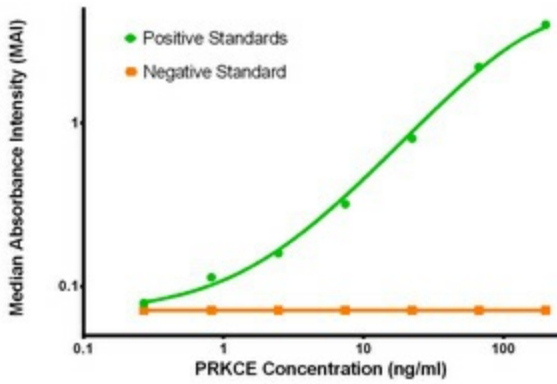
Product data:

Product Type:	Primary Antibodies
Clone Name:	OTI1G5
Applications:	ELISA, LMNX
Recommended Dilution:	1:100 - 1:1000
Reactivity:	Human, Mouse, Rat
Host:	Mouse
Isotype:	IgG1
Clonality:	Monoclonal
Immunogen:	Full length human recombinant protein of human PRKCE (NP_005391) produced in HEK293T cel
Formulation:	Stored in PBS (pH 7.4) containing 0.05% sodium azide and up to 5% trehalose
Concentration:	0.5 mg/ml
Conjugation:	Unconjugated
Storage:	Store at -20°C. Avoid repeat freeze/thaw cycles.
Stability:	Stable for 12 months from date of receipt.
Gene Name:	protein kinase C epsilon
Database Link:	NP_005391 Entrez Gene 18754 Mouse Entrez Gene 29340 Rat Entrez Gene 5581 Human Q02156
Synonyms:	nPKC-epsilon; PKCE
Matched ELISA Pair:	TA700070, TA700071, TA700073
Protein Families:	Druggable Genome, Protein Kinase
Protein Pathways:	Fc epsilon RI signaling pathway, Fc gamma R-mediated phagocytosis, Tight junction, Type II diabetes mellitus, Vascular smooth muscle contraction

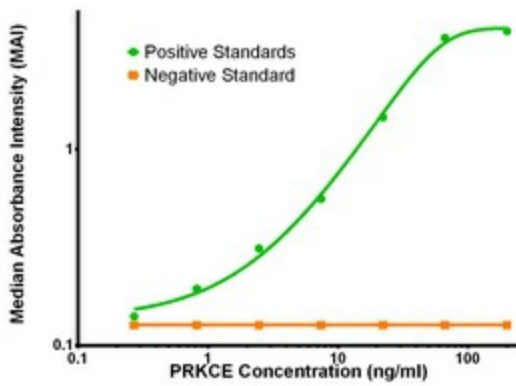


[View online »](#)

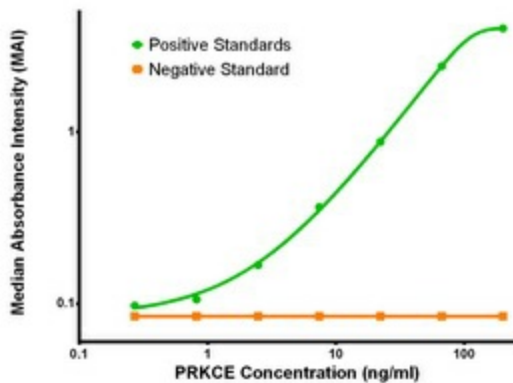
Product images:



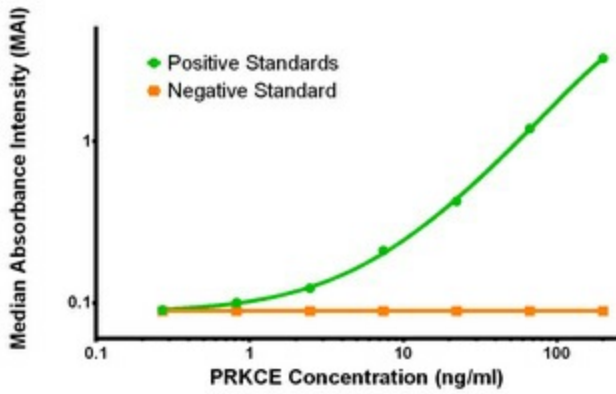
PRKCE ELISA with 1G5 Capture (TA600072) and 1B7 Detection ([TA700071]) Antibodies. Substrate used: Recombinant Human PRKCE ([TP317702])



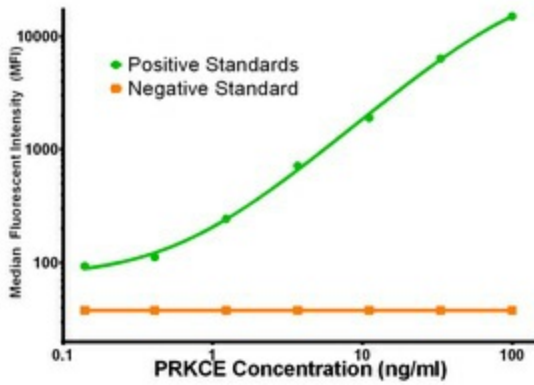
PRKCE ELISA with 1G5 Capture (TA600072) and 1B4 Detection ([TA700070]) Antibodies. Substrate used: Recombinant Human PRKCE ([TP317702])



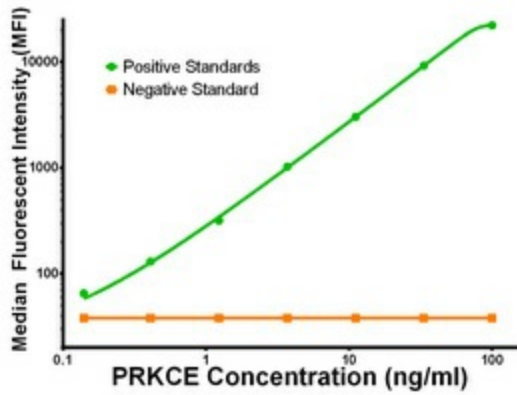
PRKCE ELISA with 1G5 Capture (TA600072) and 2A12 Detection ([TA700072]) Antibodies. Substrate used: Recombinant Human PRKCE ([TP317702])



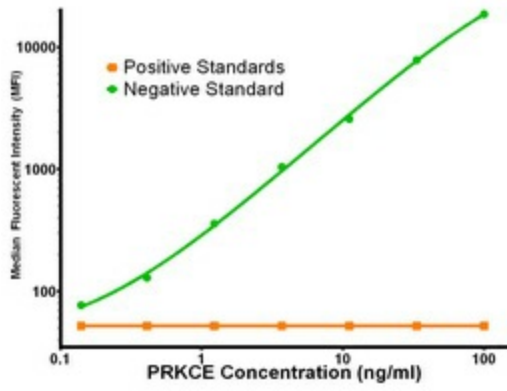
PRKCE ELISA with 1G5 Capture (TA600072) and 4G8 Detection ([TA700073]) Antibodies. Substrate used: Recombinant Human PRKCE ([TP317702])



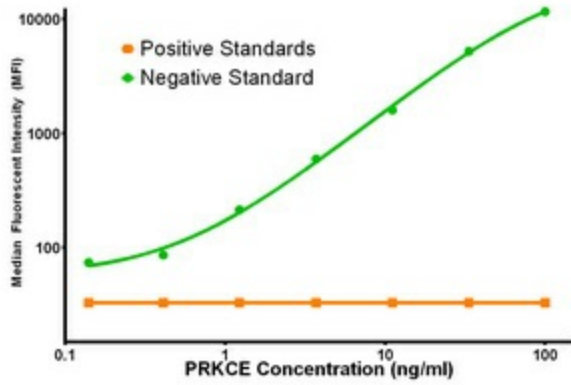
PRKCE Luminex with 1G5 Capture (TA600072) and 1B7 Detection ([TA700071]) Antibodies. Substrate used: Recombinant Human PRKCE ([TP317702])



PRKCE Luminex with 1G5 Capture (TA600072) and 1B4 Detection ([TA700070]) Antibodies. Substrate used: Recombinant Human PRKCE ([TP317702])



PRKCE Luminex with 1G5 Capture (TA600072) and 2A12 Detection ([TA700072]) Antibodies. Substrate used: Recombinant Human PRKCE ([TP317702])



PRKCE Luminex with 1G5 Capture (TA600072) and 4G8 Detection ([TA700073]) Antibodies. Substrate used: Recombinant Human PRKCE ([TP317702])