

Product datasheet for **TA600066**

MEF2C Mouse Monoclonal Capture Antibody [Clone ID: OTI1D1]

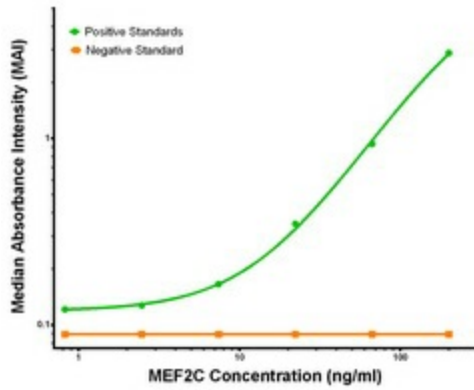
Product data:

Product Type:	Primary Antibodies
Clone Name:	OTI1D1
Applications:	ELISA, LMNX
Recommended Dilution:	1:100 - 1:1000
Reactivity:	Human, Mouse, Rat
Host:	Mouse
Isotype:	IgG1
Clonality:	Monoclonal
Immunogen:	Full length human recombinant protein of human MEF2C(NP_002388) produced in HEK293T cell
Formulation:	Stored in PBS (pH 7.4) containing 0.05% sodium azide and up to 5% trehalose
Concentration:	0.5 mg/ml
Conjugation:	Unconjugated
Storage:	Store at -20°C. Avoid repeat freeze/thaw cycles.
Stability:	Stable for 12 months from date of receipt.
Gene Name:	myocyte enhancer factor 2C
Database Link:	NP_002388 Entrez Gene 17260 Mouse Entrez Gene 499497 Rat Entrez Gene 4208 Human Q06413
Synonyms:	C5DELq14.3; DEL5q14.3
Matched ELISA Pair:	TA700065, TA700066
Protein Families:	Transcription Factors
Protein Pathways:	MAPK signaling pathway

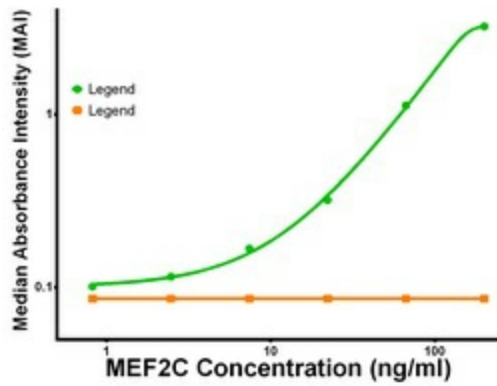


[View online »](#)

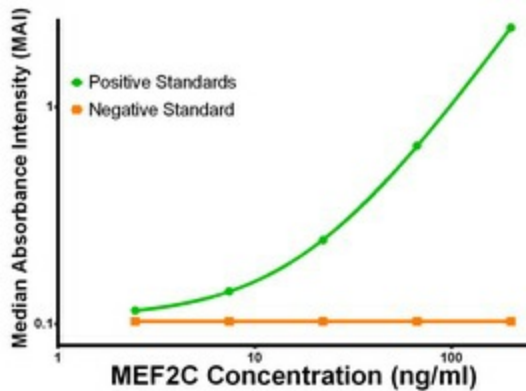
Product images:



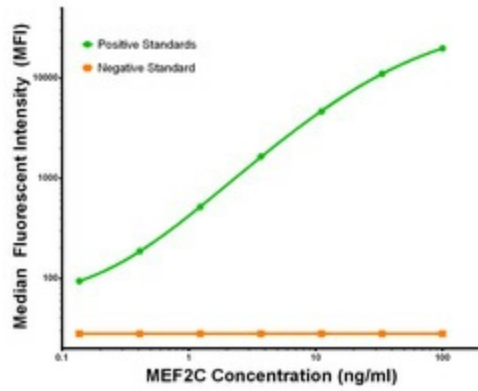
MEF2C ELISA with 1D1 Capture (TA600066) and 4F7 Detection ([TA700066]) Antibodies. Substrate used: Recombinant Human MEF2C ([TP320584])



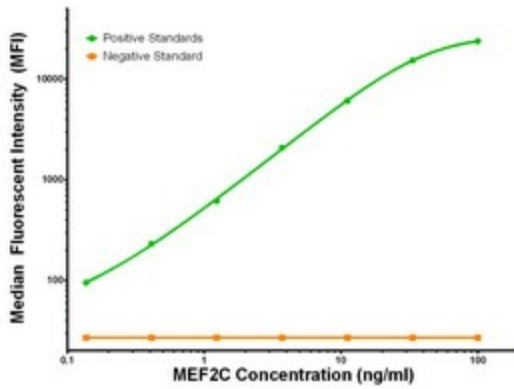
MEF2C ELISA with 1D1 Capture (TA600066) and 4G8 Detection ([TA700067]) Antibodies. Substrate used: Recombinant Human MEF2C ([TP320584])



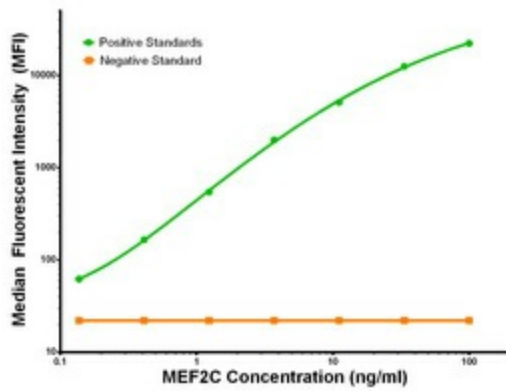
MEF2C ELISA with 1D1 Capture (TA600066) and 1B6 Detection ([TA700065]) Antibodies. Substrate used: Recombinant Human MEF2C ([TP320584])



MEF2C Luminex with 1D1 Capture (TA600066) and 4F7 Detection ([TA700066]) Antibodies. Substrate used: Recombinant Human MEF2C ([TP320584])



MEF2C Luminex with 1D1 Capture (TA600066) and 4G8 Detection ([TA700067]) Antibodies. Substrate used: Recombinant Human MEF2C ([TP320584])



MEF2C Luminex with 1D1 Capture (TA600066) and 1B6 Detection ([TA700065]) Antibodies. Substrate used: Recombinant Human MEF2C ([TP320584])