

## Product datasheet for **TA600056**

### LEPRE1 (P3H1) Mouse Monoclonal Capture Antibody [Clone ID: OTI1A1]

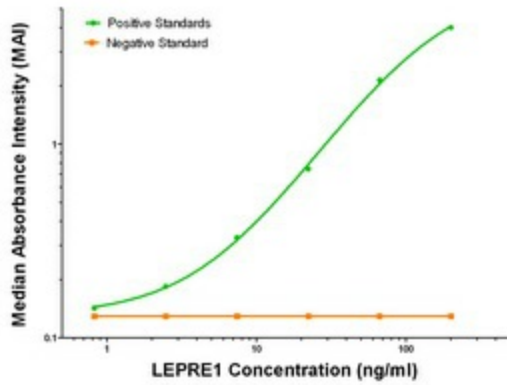
#### Product data:

Product Type:	Primary Antibodies
Clone Name:	OTI1A1
Applications:	ELISA, LMNX
Recommended Dilution:	1:100 - 1:1000
Reactivity:	Human
Host:	Mouse
Isotype:	IgG1
Clonality:	Monoclonal
Immunogen:	Full length human recombinant protein of human LEPRE1 (NM_022356) produced in HEK293T cell.
Formulation:	Stored in PBS (pH 7.4) containing 0.05% sodium azide and up to 5% trehalose
Concentration:	0.5 mg/ml
Conjugation:	Unconjugated
Storage:	Store at -20°C. Avoid repeat freeze/thaw cycles.
Stability:	Stable for 12 months from date of receipt.
Gene Name:	prolyl 3-hydroxylase 1
Database Link:	<a href="#">NP_071751</a> <a href="#">Entrez Gene 64175 Human</a> <a href="#">Q32P28</a>
Synonyms:	GROS1; LEPRE1; OI8
Matched ELISA Pair:	TA700057
Protein Families:	Secreted Protein

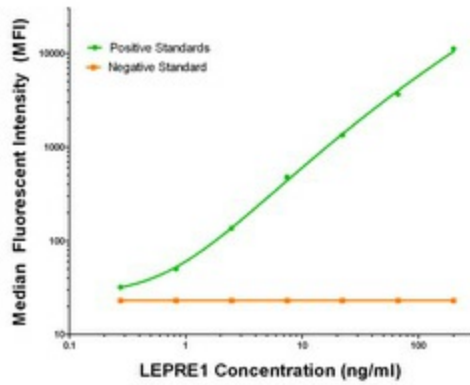


[View online »](#)

Product images:



LEPRE1 ELISA with 1A1 Capture (TA600056) and 1B4 Detection ([TA700057]) Antibodies. Substrate used: Recombinant Human LEPRE1 ([TP322535])



LEPRE1 Luminex with 1A1 Capture (TA600056) and 1B4 Detection ([TA700057]) Antibodies. Substrate used: Recombinant Human LEPRE1 ([TP322535])