

Product datasheet for **TA600053**

Aminoacylase 1 (ACY1) Mouse Monoclonal Capture Antibody [Clone ID: OTI2B5]

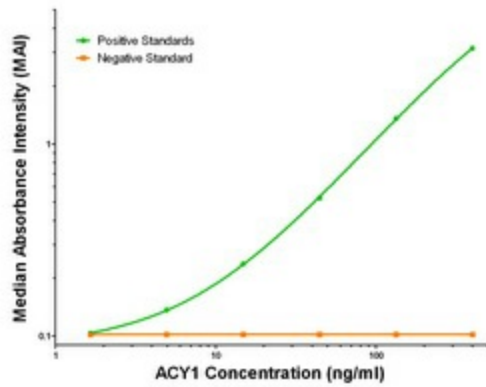
Product data:

Product Type:	Primary Antibodies
Clone Name:	OTI2B5
Applications:	ELISA, LMNX
Recommended Dilution:	1:100 - 1:1000
Reactivity:	Human, Mouse, Rat
Host:	Mouse
Isotype:	IgG1
Clonality:	Monoclonal
Immunogen:	Full length human recombinant protein of human ACY1 (NP_000657) produced in HEK293T cell.
Formulation:	Stored in PBS (pH 7.4) containing 0.05% sodium azide and up to 5% trehalose
Concentration:	0.5 mg/ml
Conjugation:	Unconjugated
Storage:	Store at -20°C. Avoid repeat freeze/thaw cycles.
Stability:	Stable for 12 months from date of receipt.
Gene Name:	aminoacylase 1
Database Link:	NP_000657 Entrez Gene 109652 MouseEntrez Gene 300981 RatEntrez Gene 95 Human Q03154
Synonyms:	ACY-1; ACY1D; HEL-S-5
Matched ELISA Pair:	TA700051, TA700053
Protein Families:	Protease
Protein Pathways:	Arginine and proline metabolism, Metabolic pathways

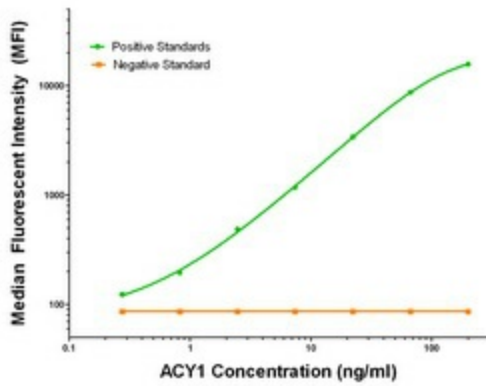


[View online »](#)

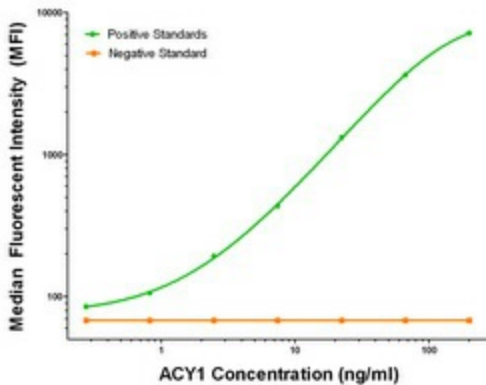
Product images:



ACY1 ELISA with 2B5 Capture (TA600053) and 1E5 Detection ([TA700051]) Antibodies. Substrate used: Recombinant Human ACY1 ([TP301284])



ACY1 Luminex with 2B5 Capture (TA600053) and 1E5 Detection ([TA700051]) Antibodies. Substrate used: Recombinant Human ACY1 ([TP301284])



ACY1 Luminex with 2B5 Capture (TA600053) and 2F1 Detection ([TA700053]) Antibodies. Substrate used: Recombinant Human ACY1 ([TP304079])