

## Product datasheet for **TA600043**

### LOX Mouse Monoclonal Capture Antibody [Clone ID: OTI9B5]

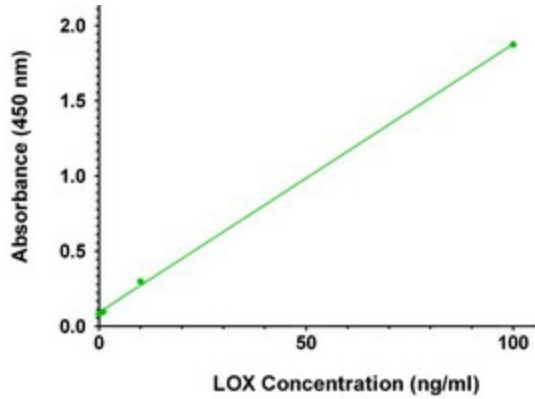
#### Product data:

Product Type:	Primary Antibodies
Clone Name:	OTI9B5
Applications:	ELISA, LMNX
Recommended Dilution:	1:100 - 1:1000
Reactivity:	Human, Mouse, Rat
Host:	Mouse
Isotype:	IgG1
Clonality:	Monoclonal
Immunogen:	Human recombinant protein fragment corresponding to amino acids 22-168 of human LOX (NP_002308) produced in HEK293T cell.
Formulation:	Stored in PBS (pH 7.4) containing 0.05% sodium azide and up to 5% trehalose
Concentration:	0.5 mg/ml
Conjugation:	Unconjugated
Storage:	Store at -20°C. Avoid repeat freeze/thaw cycles.
Stability:	Stable for 12 months from date of receipt.
Gene Name:	lysyl oxidase
Database Link:	<a href="#">NP_002308</a> <a href="#">Entrez Gene 16948 Mouse</a> <a href="#">Entrez Gene 24914 Rat</a> <a href="#">Entrez Gene 4015 Human</a> <a href="#">P28300</a>
Synonyms:	MGC105112
Matched ELISA Pair:	TA700029
Protein Families:	Druggable Genome, Secreted Protein

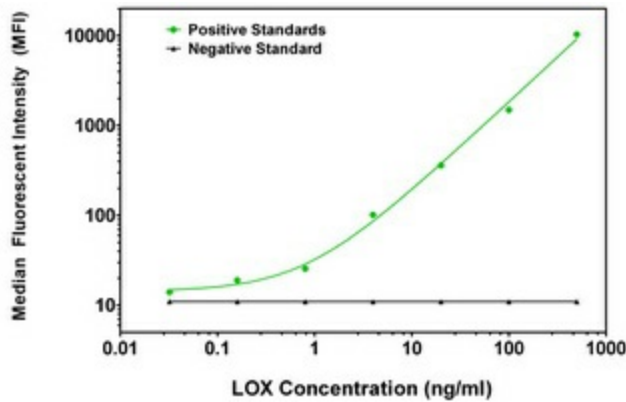


[View online »](#)

Product images:



LOX ELISA with 9B5 Capture (TA600043) and 9A11 Detection ([TA700029]) Antibodies. Substrate used: Recombinant Human LOX ([TP313323])



LOX Luminex ELISA with 9B5 Capture (TA600043) and 9A11 Detection ([TA700029]) Antibodies. Substrate used: Recombinant Human LOX ([TP313323])