

Product datasheet for **TA600042**

HIF1 beta (ARNT) Mouse Monoclonal Capture Antibody [Clone ID: OTI1D10]

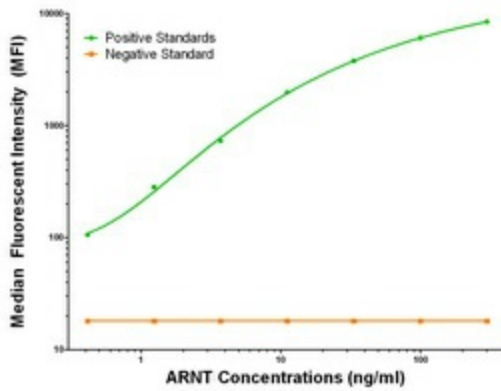
Product data:

Product Type:	Primary Antibodies
Clone Name:	OTI1D10
Applications:	LMNX
Recommended Dilution:	1:100 - 1:1000
Reactivity:	Human, Mouse, Rat
Host:	Mouse
Isotype:	IgG1
Clonality:	Monoclonal
Immunogen:	Full length human recombinant protein of human ARNT (NM_001668) produced in HEK293T cell.
Formulation:	Stored in PBS (pH 7.4) containing 0.05% sodium azide and up to 5% trehalose
Concentration:	0.5 mg/ml
Conjugation:	Unconjugated
Storage:	Store at -20°C. Avoid repeat freeze/thaw cycles.
Stability:	Stable for 12 months from date of receipt.
Gene Name:	aryl hydrocarbon receptor nuclear translocator
Database Link:	NP_001659 Entrez Gene 11863 Mouse Entrez Gene 25242 Rat Entrez Gene 405 Human P27540
Synonyms:	bHLHe2; HIF-1-beta; HIF-1beta; HIF1-beta; HIF1B; HIF1BETA; TANGO
Matched ELISA Pair:	TA700042, TA700046
Protein Families:	Druggable Genome, Transcription Factors
Protein Pathways:	Pathways in cancer, Renal cell carcinoma

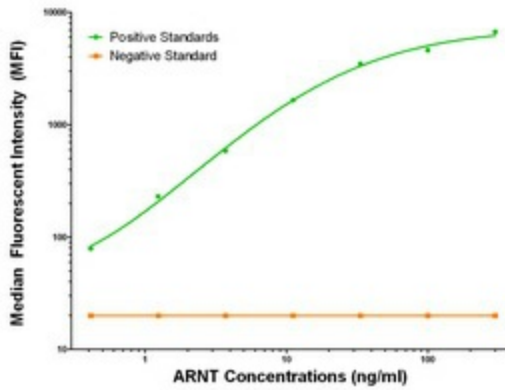


[View online »](#)

Product images:



ARNT Luminex with 1D10 Capture (TA600042) and 1A1 Detection ([TA700042]) Antibodies. Substrate used: Recombinant Human ARNT ([TP316724])



ARNT Luminex with 1D10 Capture (TA600042) and 2C7 Detection ([TA700046]) Antibodies. Substrate used: Recombinant Human ARNT ([TP316724])