

Product datasheet for **TA600038**

Cytochrome P450 1A2 (CYP1A2) Mouse Monoclonal Capture Antibody [Clone ID: OTI7A9]

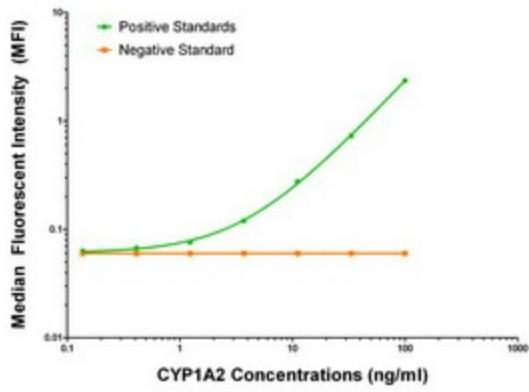
Product data:

Product Type:	Primary Antibodies
Clone Name:	OTI7A9
Applications:	ELISA
Recommended Dilution:	1:100 - 1:1000
Reactivity:	Human
Host:	Mouse
Isotype:	IgG1
Clonality:	Monoclonal
Immunogen:	Full length human recombinant protein of human CYP1A2 (NP_000752) produced in HEK293T cell.
Formulation:	Stored in PBS (pH 7.4) containing 0.05% sodium azide and up to 5% trehalose
Concentration:	0.5 mg/ml
Conjugation:	Unconjugated
Storage:	Store at -20°C. Avoid repeat freeze/thaw cycles.
Stability:	Stable for 12 months from date of receipt.
Gene Name:	cytochrome P450 family 1 subfamily A member 2
Database Link:	NP_000752 Entrez Gene 1544 Human P05177
Synonyms:	CP12; P3-450; P450(PA)
Matched ELISA Pair:	TA700038
Protein Families:	Druggable Genome, P450, Transmembrane
Protein Pathways:	Caffeine metabolism, Drug metabolism - cytochrome P450, Linoleic acid metabolism, Metabolic pathways, Metabolism of xenobiotics by cytochrome P450, Retinol metabolism, Tryptophan metabolism



[View online »](#)

Product images:



CYP1A2 ELISA with 7A9 Capture (TA600038) and 15E2 Detection ([TA700038]) Antibodies.
Substrate used: Recombinant Human CYP1A2 ([TP321636])