

## Product datasheet for **TA600034**

### beta Catenin (CTNNB1) Mouse Monoclonal Capture Antibody [Clone ID: OTI9F6]

#### Product data:

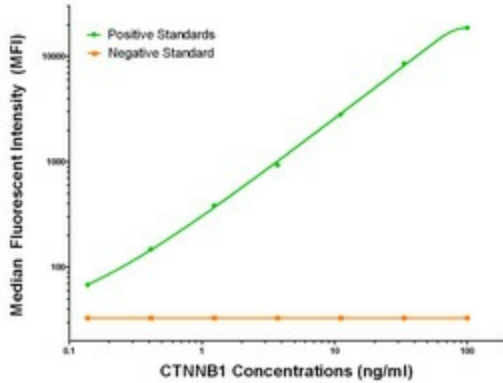
Product Type:	Primary Antibodies
Clone Name:	OTI9F6
Applications:	LMNX
Recommended Dilution:	1:100 - 1:1000
Reactivity:	Human, Dog, Mouse, Rat
Host:	Mouse
Isotype:	IgG2a
Clonality:	Monoclonal
Immunogen:	Full length human recombinant protein of human CTNNB1 (NP_001895) produced in HEK293T cell.
Formulation:	Stored in PBS (pH 7.4) containing 0.05% sodium azide and up to 5% trehalose
Concentration:	0.5 mg/ml
Conjugation:	Unconjugated
Storage:	Store at -20°C. Avoid repeat freeze/thaw cycles.
Stability:	Stable for 12 months from date of receipt.
Gene Name:	catenin beta 1
Database Link:	<a href="#">NP_001895</a> <a href="#">Entrez Gene 12387 Mouse</a> <a href="#">Entrez Gene 84353 Rat</a> <a href="#">Entrez Gene 477032 Dog</a> <a href="#">Entrez Gene 1499 Human</a> <a href="#">P35222</a>
Synonyms:	armadillo; CTNNB; MRD19
Matched ELISA Pair:	TA700034, TA700141
Protein Families:	Druggable Genome, ES Cell Differentiation/IPS, Transcription Factors



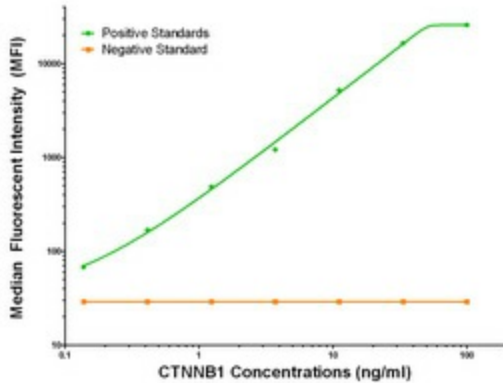
[View online »](#)

**Protein Pathways:**

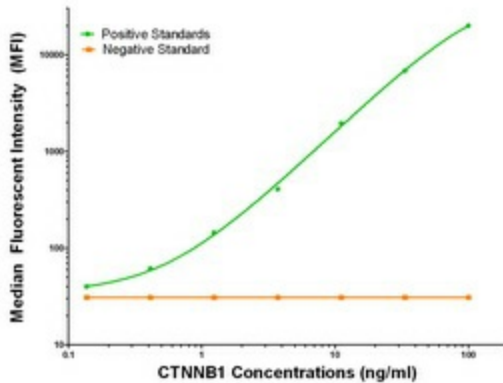
Adherens junction, Arrhythmogenic right ventricular cardiomyopathy (ARVC), Basal cell carcinoma, Colorectal cancer, Endometrial cancer, Focal adhesion, Leukocyte transendothelial migration, Melanogenesis, Pathogenic Escherichia coli infection, Pathways in cancer, Prostate cancer, Thyroid cancer, Tight junction, Wnt signaling pathway

**Product images:**


CTNNB1 Luminex with 9F6 Capture (TA600034) and 12C1 Detection ([TA700034]) Antibodies. Substrate used: Recombinant Human CTNNB1 ([TP308947])



CTNNB1 Luminex with 9F6 Capture (TA600034) and 6E7 Detection ([TA700035]) Antibodies. Substrate used: Recombinant Human CTNNB1 ([TP308947])



CTNNB1 Luminex with 9F6 Capture (TA600034) and 12H7 Detection ([TA700141]) Antibodies. Substrate used: Recombinant Human CTNNB1 ([TP308947])