

## Product datasheet for **TA600032**

### **BIRC5 Mouse Monoclonal Capture Antibody [Clone ID: OTI2D9]**

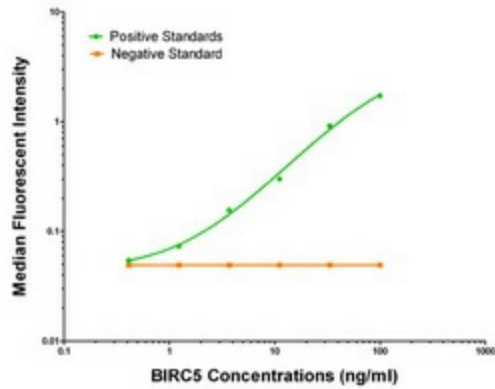
#### **Product data:**

Product Type:	Primary Antibodies
Clone Name:	OTI2D9
Applications:	ELISA, LMNX
Recommended Dilution:	1:100 - 1:1000
Reactivity:	Human
Host:	Mouse
Isotype:	IgG1
Clonality:	Monoclonal
Immunogen:	Full length human recombinant protein of human BIRC5 (NP_001159) produced in HEK293T cell.
Formulation:	Stored in PBS (pH 7.4) containing 0.05% sodium azide and up to 5% trehalose
Concentration:	0.5 mg/ml
Conjugation:	Unconjugated
Storage:	Store at -20°C. Avoid repeat freeze/thaw cycles.
Stability:	Stable for 12 months from date of receipt.
Gene Name:	baculoviral IAP repeat containing 5
Database Link:	<a href="#">NP_001159</a> <a href="#">Entrez Gene 332 Human</a> <a href="#">O15392</a>
Synonyms:	API4; EPR-1
Matched ELISA Pair:	TA700032
Protein Families:	Druggable Genome, Stem cell - Pluripotency
Protein Pathways:	Colorectal cancer, Pathways in cancer

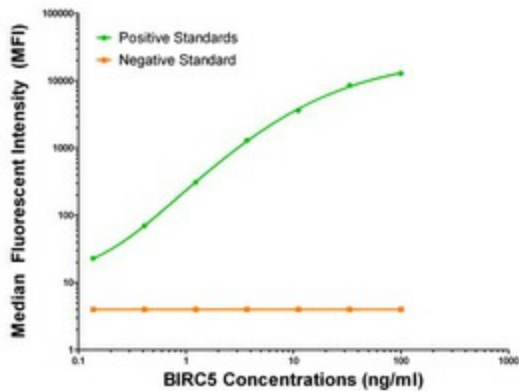


[View online »](#)

Product images:



BIRC5 ELISA with 2D9 Capture (TA600032) and 3G3 Detection ([TA700032]) Antibodies. Substrate used: Recombinant Human BIRC5 ([TP305935])



BIRC5 Luminex ELISA with 2D9 Capture (TA600032) and 3G3 Detection ([TA700032]) Antibodies. Substrate used: Recombinant Human BIRC5 ([TP305935])