

## Product datasheet for **TA600031**

### CD36 Mouse Monoclonal Capture Antibody [Clone ID: OTI3F4]

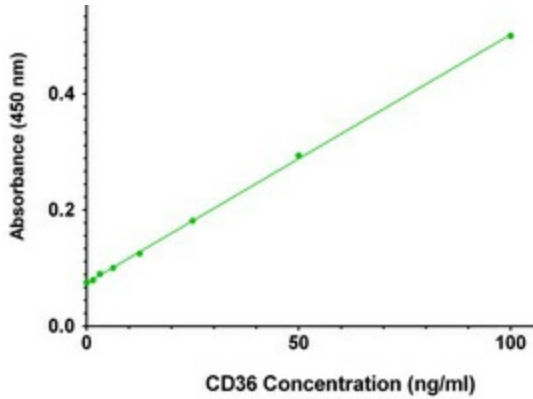
#### Product data:

Product Type:	Primary Antibodies
Clone Name:	OTI3F4
Applications:	ELISA, LMNX
Recommended Dilution:	1:100 - 1:1000
Reactivity:	Human, Rat
Host:	Mouse
Isotype:	IgG1
Clonality:	Monoclonal
Immunogen:	Full length human recombinant protein of human CD36 (NP_000063) produced in HEK293T cell.
Formulation:	Stored in PBS (pH 7.4) containing 0.05% sodium azide and up to 5% trehalose
Concentration:	0.5 mg/ml
Conjugation:	Unconjugated
Storage:	Store at -20°C. Avoid repeat freeze/thaw cycles.
Stability:	Stable for 12 months from date of receipt.
Gene Name:	CD36 molecule
Database Link:	<a href="#">NP_000063</a> <a href="#">Entrez Gene 29184 Rat</a> <a href="#">Entrez Gene 948 Human</a> <a href="#">P16671</a>
Synonyms:	BDPLT10; CHDS7; FAT; GP3B; GP4; GPIV; PASIV; SCARB3
Matched ELISA Pair:	TA700031
Protein Families:	Druggable Genome, Transmembrane
Protein Pathways:	Adipocytokine signaling pathway, ECM-receptor interaction, Hematopoietic cell lineage, PPAR signaling pathway

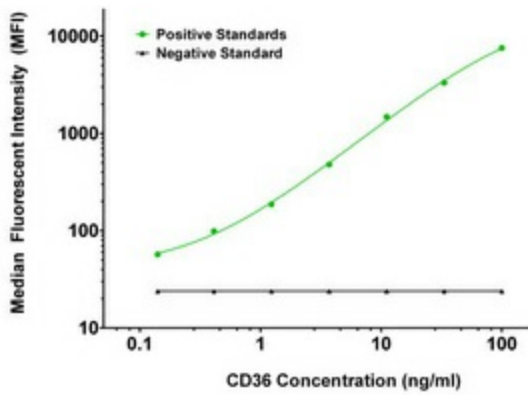


[View online »](#)

Product images:



CD36 ELISA with 3F4 Capture (TA600031) and 4H7 Detection ([TA700031]) Antibodies. Substrate used: Recombinant Human CD36 ([TP303254])



CD36 Luminex ELISA with 3F4 Capture (TA600031) and 4H7 Detection ([TA700031]) Antibodies. Substrate used: Recombinant Human CD36 ([TP303254])