

Product datasheet for **TA600028**

CD62E (SELE) Mouse Monoclonal Capture Antibody [Clone ID: CL-37]

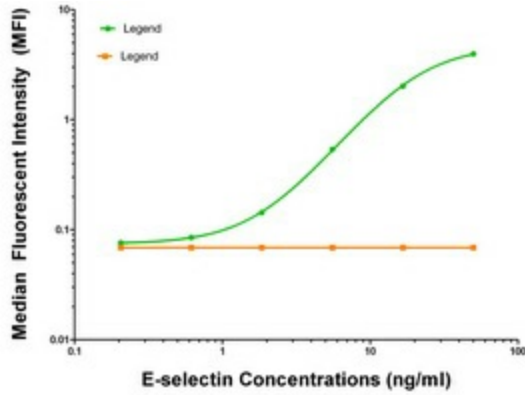
Product data:

Product Type:	Primary Antibodies
Clone Name:	CL-37
Applications:	ELISA, LMNX
Recommended Dilution:	1:100 - 1:1000
Reactivity:	Human
Host:	Mouse
Isotype:	IgG1
Clonality:	Monoclonal
Immunogen:	Purified recombinant protein of human SELE produced in E. coli cell.
Formulation:	Stored in PBS (pH 7.4) containing 0.05% sodium azide and up to 5% trehalose
Concentration:	0.5 mg/ml
Conjugation:	Unconjugated
Storage:	Store at -20°C. Avoid repeat freeze/thaw cycles.
Stability:	Stable for 12 months from date of receipt.
Gene Name:	selectin E
Database Link:	NP_000441 Entrez Gene 6401 Human P16581
Synonyms:	CD62E; ELAM; ELAM1; ESEL; LECAM2
Matched ELISA Pair:	TA700028
Protein Families:	Druggable Genome, Transmembrane
Protein Pathways:	Cell adhesion molecules (CAMs)

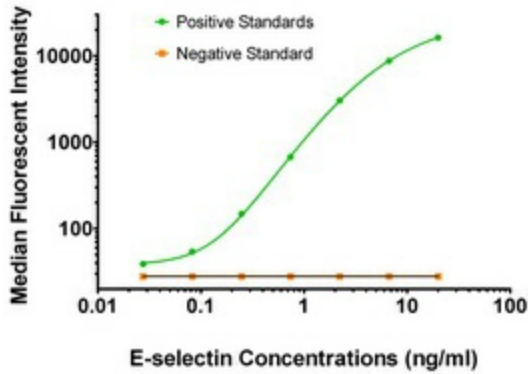


[View online »](#)

Product images:



SELE ELISA with CL-37 Capture (TA600028) and CL2 Detection ([TA700028]) Antibodies. Substrate used: Recombinant Human SELE ([TP321153])



SELE Luminex ELISA with CL-37 Capture (TA600028) and CL2 Detection ([TA700028]) Antibodies. Substrate used: Recombinant Human SELE ([TP321153])