

Product datasheet for **TA600027**

CD40L (CD40LG) Mouse Monoclonal Capture Antibody [Clone ID: MK13A4]

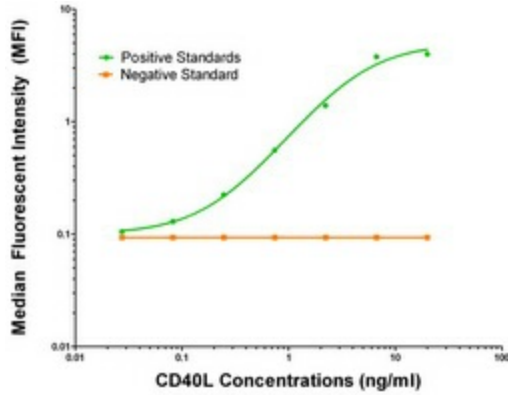
Product data:

Product Type:	Primary Antibodies
Clone Name:	MK13A4
Applications:	ELISA, LMNX
Recommended Dilution:	1:100 - 1:1000
Reactivity:	Human
Host:	Mouse
Isotype:	IgG1
Clonality:	Monoclonal
Immunogen:	Purified recombinant protein of human CD40L produced in E. coli.
Formulation:	Stored in PBS (pH 7.4) containing 0.05% sodium azide and up to 5% trehalose
Concentration:	0.5 mg/ml
Conjugation:	Unconjugated
Storage:	Store at -20°C. Avoid repeat freeze/thaw cycles.
Stability:	Stable for 12 months from date of receipt.
Gene Name:	CD40 ligand
Database Link:	NP_000065 Entrez Gene 959 Human P29965
Synonyms:	CD40L; CD154; gp39; hCD40L; HIGM1; IGM; IMD3; T-BAM; TNFSF5; TRAP
Matched ELISA Pair:	TA700027
Protein Families:	Druggable Genome, Secreted Protein, Transmembrane
Protein Pathways:	Allograft rejection, Asthma, Autoimmune thyroid disease, Cell adhesion molecules (CAMs), Cytokine-cytokine receptor interaction, Primary immunodeficiency, Systemic lupus erythematosus, T cell receptor signaling pathway, Viral myocarditis

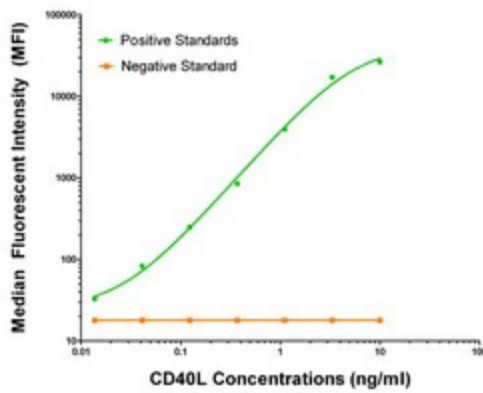


[View online »](#)

Product images:



CD40L ELISA with MK13A4 Capture (TA600027) and MK13A4 Detection ([TA700027]) Antibodies. Substrate used: Recombinant Human CD40L (E. Coli expressed Peptide)



CD40L Luminex ELISA with MK13A4 Capture (TA600027) and MK13A4 Detection ([TA700027]) Antibodies. Substrate used: Recombinant Human CD40L (E. Coli expressed Peptide)