

Product datasheet for **TA600025**

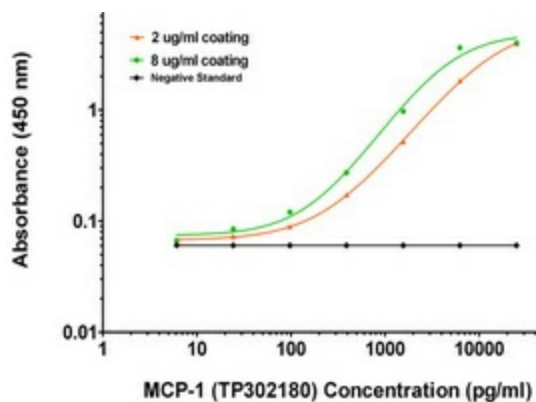
MCP1 (CCL2) Mouse Monoclonal Capture Antibody [Clone ID: OTI5D3]

Product data:

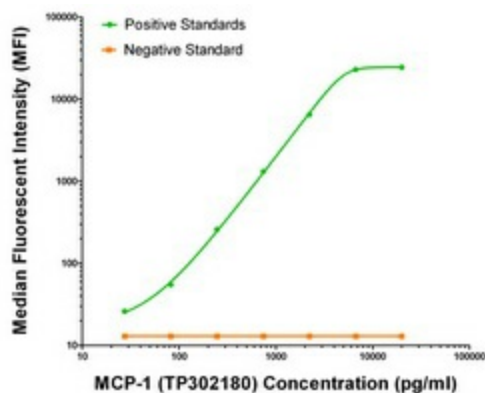
Product Type:	Primary Antibodies
Clone Name:	OTI5D3
Applications:	ELISA, LMNX
Recommended Dilution:	1:100 - 1:1000
Reactivity:	Human
Host:	Mouse
Isotype:	IgG1
Clonality:	Monoclonal
Immunogen:	Purified recombinant protein of human MCP-1 (NP_002973) produced in HEK293T cell.
Formulation:	Stored in PBS (pH 7.4) containing 0.05% sodium azide and up to 5% trehalose
Concentration:	0.5 mg/ml
Conjugation:	Unconjugated
Storage:	Store at -20°C. Avoid repeat freeze/thaw cycles.
Stability:	Stable for 12 months from date of receipt.
Gene Name:	C-C motif chemokine ligand 2
Database Link:	NP_002973 Entrez Gene 6347 Human P13500
Synonyms:	GDCCF-2; HC11; HSMCR30; MCAF; MCP-1; MCP1; SCYA2; SMC-CF
Matched ELISA Pair:	TA700025
Protein Families:	Druggable Genome, Secreted Protein
Protein Pathways:	Chemokine signaling pathway, Cytokine-cytokine receptor interaction, NOD-like receptor signaling pathway

[View online »](#)

Product images:



MCP-1 ELISA with 5D3 Capture (TA600025) and 2H5 Detection ([TA700025]) Antibodies. Substrate used: Recombinant Human MCP-1 (E. Coli expressed Peptide)



MCP-1 Luminex ELISA with 5D3 Capture (TA600025) and 2H5 Detection ([TA700025]) Antibodies. Substrate used: Recombinant Human MCP-1 (E. Coli expressed Peptide)