

## Product datasheet for **TA600014**

### alpha 1 Fetoprotein (AFP) Mouse Monoclonal Capture Antibody [Clone ID: OTI2E2]

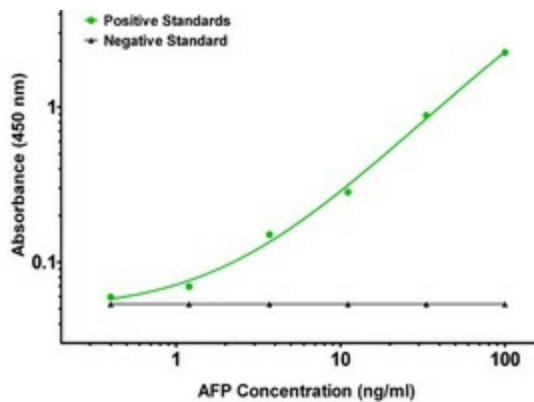
#### Product data:

|                       |  |
|-----------------------|--|
| Product Type:         | Primary Antibodies   |
| Clone Name:           | OTI2E2   |
| Applications:         | ELISA  |
| Recommended Dilution: | 1:100 - 1:1000   |
| Reactivity:           | Human  |
| Host:                 | Mouse  |
| Isotype:              | IgG2a  |
| Clonality:            | Monoclonal   |
| Immunogen:            | Full length human recombinant protein of human AFP (NP_001125) produced in HEK293T cell.     |
| Formulation:          | Stored in PBS (pH 7.4) containing 0.05% sodium azide and up to 5% trehalose                  |
| Concentration:        | 0.5 mg/ml  |
| Conjugation:          | Unconjugated   |
| Storage:              | Store at -20°C.<br>Avoid repeat freeze/thaw cycles.  |
| Stability:            | Stable for 12 months from date of receipt.   |
| Gene Name:            | alpha fetoprotein  |
| Database Link:        | <a href="#">NP_001125</a><br><a href="#">Entrez Gene 174 Human</a><br><a href="#">P02771</a> |
| Synonyms:             | AFPD; FETA; HPAFP  |
| Matched ELISA Pair:   | TA700014   |
| Protein Families:     | Druggable Genome, Secreted Protein   |



[View online »](#)

## Product images:



AFP ELISA with 2E2 Capture (TA600014) and 1E8 Detection ([TA700014]) Antibodies. Substrate used: Recombinant Human AFP ([TP306622])