

## Product datasheet for **TA600005**

### Neurogenin 1 (NEUROG1) Mouse Monoclonal Capture Antibody [Clone ID: OTI15A7]

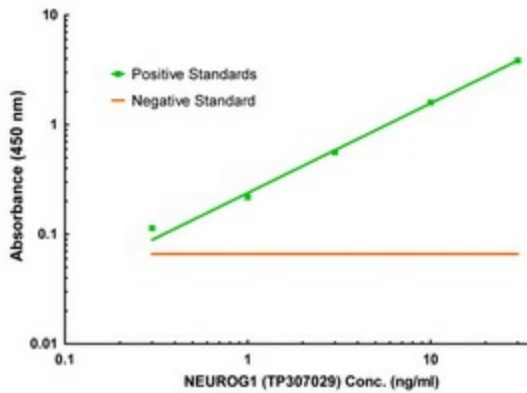
#### Product data:

Product Type:	Primary Antibodies
Clone Name:	OTI15A7
Applications:	ELISA, LMNX
Recommended Dilution:	1:100 - 1:1000
Reactivity:	Human, Mouse, Rat
Host:	Mouse
Isotype:	IgG1
Clonality:	Monoclonal
Immunogen:	Full length human recombinant protein of human NEUROG1 (NP_006152) produced in HEK293T cell.
Formulation:	Stored in PBS (pH 7.4) containing 0.05% sodium azide and up to 5% trehalose
Concentration:	0.5 mg/ml
Conjugation:	Unconjugated
Storage:	Store at -20°C. Avoid repeat freeze/thaw cycles.
Stability:	Stable for 12 months from date of receipt.
Gene Name:	neurogenin 1
Database Link:	<a href="#">NP_006152</a> <a href="#">Entrez Gene 18014 Mouse</a> <a href="#">Entrez Gene 29410 Rat</a> <a href="#">Entrez Gene 4762 Human</a> <a href="#">Q92886</a>
Synonyms:	AKA; bHLHa6; Math4C; NEUROD3; ngn1
Matched ELISA Pair:	TA700005
Protein Families:	Druggable Genome, ES Cell Differentiation/IPS, Transcription Factors

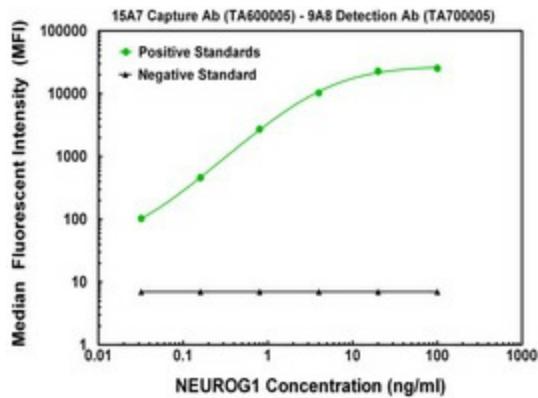


[View online »](#)

Product images:



NEUROG1 ELISA with 15A7 Capture (TA600005) and 9A8 Detection ([TA700005]) Antibodies. Substrate used: Recombinant Human NEUROG1 ([TP307029])



NEUROG1 Luminex ELISA with 15A7 Capture (TA600005) and 9A8 Detection ([TA700005]) Antibodies. Substrate used: Recombinant Human NEUROG1 ([TP307029])