

Product datasheet for **TA594445S**

Perilipin-1 (PLIN1) Rabbit Monoclonal Antibody [Clone ID: OTIR2G2]

Product data:

Product Type:	Primary Antibodies
Clone Name:	OTIR2G2
Applications:	WB
Recommended Dilution:	WB1:2000
Reactivity:	Human
Host:	Rabbit
Isotype:	IgG
Clonality:	Monoclonal
Immunogen:	Synthetic peptide (the amino acid sequence is considered to be commercially sensitive) within Human PLIN1 (NP_001138783). The exact sequence is proprietary.
Formulation:	PBS (PH 7.3) containing 1% BSA, 50% glycerol and 0.02% sodium azide.
Concentration:	1 mg/ml
Purification:	Purified from mouse ascites fluids or tissue culture supernatant by affinity chromatography (protein A/G)
Conjugation:	Unconjugated
Storage:	Shipped at -20°C or with ice packs, Upon delivery store at -20°C. Dilute in PBS(pH7.3) if necessary. Stable for 12 months from date of receipt. Avoid repeated freeze-thaws.
Stability:	Stable for 12 months from date of receipt
Predicted Protein Size:	55.8KD
Gene Name:	perilipin 1
Database Link:	Entrez Gene 5346 Human O60240
Background:	The protein encoded by this gene coats lipid storage droplets in adipocytes, thereby protecting them until they can be broken down by hormone-sensitive lipase. The encoded protein is the major cAMP-dependent protein kinase substrate in adipocytes and, when unphosphorylated, may play a role in the inhibition of lipolysis. Alternatively spliced transcript variants varying in the 5' UTR, but encoding the same protein, have been found for this gene. [provided by RefSeq, Feb 2009]


[View online »](#)

Product images:

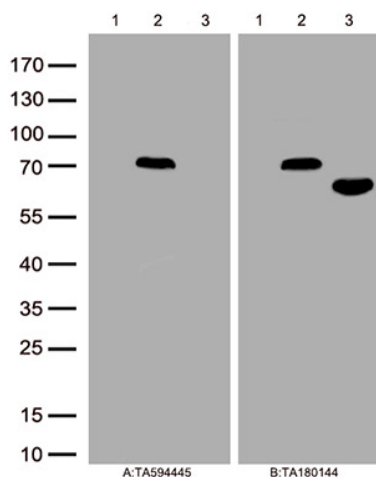


Figure A, Western blot analysis of overexpressed lysates(15ug per lane) from HEK293T cells transfected with empty plasmid ([PS100001], lane 1) , human PLIN1 plasmid ([RC226949], lane 2), mouse PLIN1 plasmid ([MR208288], lane 3)using anti-PLIN1 antibody [TA594445] (1:2000). Figure B, Western blot analysis of the same samples as figure A with anti-DDK antibody ([TA180144], 1:1000)