

Product datasheet for TA594392

IL21 Rabbit Monoclonal Antibody [Clone ID: OTIR10D9]

Product data:

Product Type:	Primary Antibodies
Clone Name:	OTIR10D9
Applications:	WB
Recommended Dilution:	WB1:2000
Reactivity:	Human
Host:	Rabbit
Isotype:	IgG
Clonality:	Monoclonal
Immunogen:	Human recombinant protein fragment of Human IL21 (NP_068575) produced in E. coli.
Formulation:	PBS (PH 7.3) containing 1% BSA, 50% glycerol and 0.02% sodium azide.
Concentration:	1 mg/ml
Purification:	Purified from mouse ascites fluids or tissue culture supernatant by affinity chromatography (protein A/G)
Conjugation:	Unconjugated
Storage:	Shipped at -20°C or with ice packs, Upon delivery store at -20°C. Dilute in PBS(pH7.3) if necessary. Stable for 12 months from date of receipt. Avoid repeated freeze-thaws.
Stability:	Stable for 12 months from date of receipt
Predicted Protein Size:	18.5KD
Gene Name:	interleukin 21
Database Link:	Entrez Gene 59067 Human Q9HBE4
Background:	This gene encodes a member of the common-gamma chain family of cytokines with immunoregulatory activity. The encoded protein plays a role in both the innate and adaptive immune responses by inducing the differentiation, proliferation and activity of multiple target cells including macrophages, natural killer cells, B cells and cytotoxic T cells. Dysregulation of this gene plays a role in multiple immune-mediated diseases including lupus, psoriasis and chronic inflammatory diseases. Alternatively spliced transcript variants encoding multiple isoforms have been observed for this gene. [provided by RefSeq, Dec 2011]


[View online »](#)

Product images:

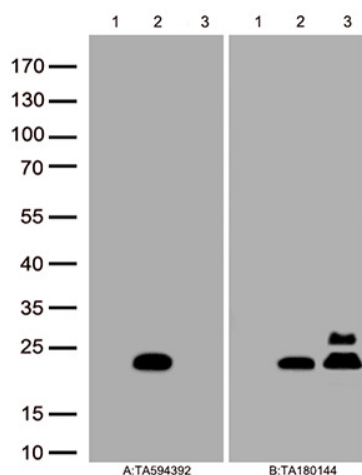


Figure A, Western blot analysis of overexpressed lysates(15ug per lane) from HEK293T cells transfected with empty plasmid ([PS100001], lane 1) , human IL21 plasmid ([RC215235], lane 2), mouse IL21 plasmid ([MR226593], lane 3)using anti-IL21 antibody TA594392 (1:2000). Figure B, Western blot analysis of the same samples as figure A with anti-DDK antibody ([TA180144], 1:1000)