

## Product datasheet for **TA594237S**

### Non Neuronal Enolase (ENO1) Rabbit Monoclonal Antibody [Clone ID: OTIR4G3]

#### Product data:

Product Type:	Primary Antibodies
Clone Name:	OTIR4G3
Applications:	WB
Recommended Dilution:	WB1:2000
Reactivity:	Human, Mouse
Host:	Rabbit
Isotype:	IgG
Clonality:	Monoclonal
Immunogen:	Human recombinant protein fragment of Human ENO1 (NP_001419) produced in Ecoli.
Formulation:	PBS (PH 7.3) containing 1% BSA, 50% glycerol and 0.02% sodium azide.
Concentration:	1 mg/ml
Purification:	Purified from mouse ascites fluids or tissue culture supernatant by affinity chromatography (protein A/G)
Conjugation:	Unconjugated
Storage:	Shipped at -20°C or with ice packs, Upon delivery store at -20°C. Dilute in PBS(pH7.3) if necessary. Stable for 12 months from date of receipt. Avoid repeated freeze-thaws.
Predicted Protein Size:	47.2KD
Gene Name:	enolase 1
Database Link:	<a href="#">NP_001419</a> <a href="#">Entrez Gene 13806 Mouse</a> <a href="#">Entrez Gene 2023 Human</a> <a href="#">P06733</a>

[View online »](#)

**Background:**

This gene encodes alpha-enolase, one of three enolase isoenzymes found in mammals. Each isoenzyme is a homodimer composed of 2 alpha, 2 gamma, or 2 beta subunits, and functions as a glycolytic enzyme. Alpha-enolase in addition, functions as a structural lens protein (tau-crystallin) in the monomeric form. Alternative splicing of this gene results in a shorter isoform that has been shown to bind to the c-myc promoter and function as a tumor suppressor. Several pseudogenes have been identified, including one on the long arm of chromosome 1. Alpha-enolase has also been identified as an autoantigen in Hashimoto encephalopathy. [provided by RefSeq, Jan 2011]

**Synonyms:**

ENO1L1; HEL-S-17; MPB1; NNE; PPH

**Protein Families:**

Druggable Genome, Transcription Factors

**Protein Pathways:**

Glycolysis / Gluconeogenesis, Metabolic pathways, RNA degradation

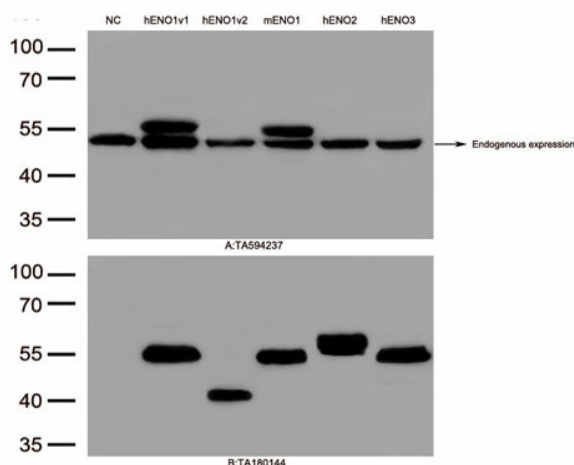
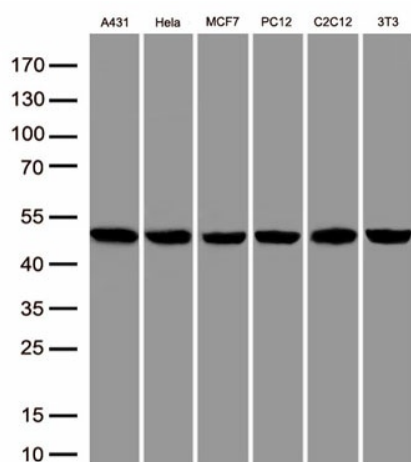
**Product images:**


Figure A, Western blot analysis of overexpressed lysates(15ug per lane) from HEK293T cells transfected with empty plasmid ([PS100001], NC) , human ENO1v1 plasmid ([RC205494], hENO1v1), human ENO1v2 plasmid ([RC232529], hENO1v2), mouse ENO1 plasmid ([MR227149], mENO1), human ENO2 plasmid ([RC201085], hENO2), human ENO3 plasmid ([RC205684], hENO3) using anti-ENO1 antibody [TA594237](1:2000). Figure B, Western blot analysis of the same samples as figure A with anti-DDK antibody ([TA180144], 1:1000)



Western blot analysis of extracts (50ug per lane) from 6 cell lines lysates by using anti-ENO1 monoclonal antibody([TA594237], 1:2000)