

Product datasheet for TA594195S

IP10 (CXCL10) Rabbit Monoclonal Antibody [Clone ID: OTIR3A2]

Product data:

Product Type:	Primary Antibodies
Clone Name:	OTIR3A2
Applications:	WB
Recommended Dilution:	WB1:5000
Reactivity:	Human
Host:	Rabbit
Isotype:	IgG
Clonality:	Monoclonal
Immunogen:	Human recombinant protein fragment of Human CXCL10 (NP_001556) produced in Ecoli.
Formulation:	PBS (PH 7.3) containing 1% BSA, 50% glycerol and 0.02% sodium azide.
Concentration:	1 mg/ml
Purification:	Purified from mouse ascites fluids or tissue culture supernatant by affinity chromatography (protein A/G)
Conjugation:	Unconjugated
Storage:	Shipped at -20°C or with ice packs, Upon delivery store at -20°C. Dilute in PBS(pH7.3) if necessary. Stable for 12 months from date of receipt. Avoid repeated freeze-thaws.
Predicted Protein Size:	10.9KD
Gene Name:	C-X-C motif chemokine ligand 10
Database Link:	NP_001556 Entrez Gene 3627 Human P02778
Background:	This antimicrobial gene encodes a chemokine of the CXC subfamily and ligand for the receptor CXCR3. Binding of this protein to CXCR3 results in pleiotropic effects, including stimulation of monocytes, natural killer and T-cell migration, and modulation of adhesion molecule expression. This gene may also be a key regulator of the 'cytokine storm' immune response to SARS-CoV-2 infection. [provided by RefSeq, Sep 2020]
Synonyms:	C7; crg-2; gIP-10; IFI10; INP10; IP-10; mob-1; SCYB10


[View online »](#)

Protein Families: Druggable Genome, Secreted Protein, Transmembrane

Protein Pathways: Chemokine signaling pathway, Cytokine-cytokine receptor interaction, Cytosolic DNA-sensing pathway, RIG-I-like receptor signaling pathway, Toll-like receptor signaling pathway

Product images:

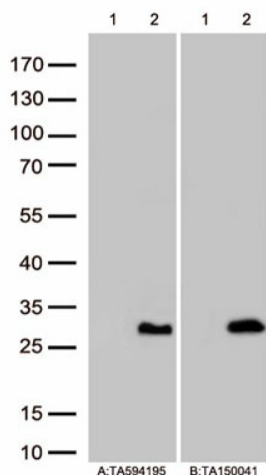


Figure A, Western blot analysis of overexpressed lysates(15ug per lane) from HEK293T cells transfected with empty plasmid ([PS100001], lane1), human CXCL10 plasmid ([RG203141], lane2) using anti-INHBB antibody [TA594195] (1:5000). Figure B, Western blot analysis of the same samples as figure A with anti-GFP antibody ([TA150041], 1:500)