

Product datasheet for **TA592964S**

PNPLA3 Rabbit Monoclonal Antibody [Clone ID: OTIR2E4]

Product data:

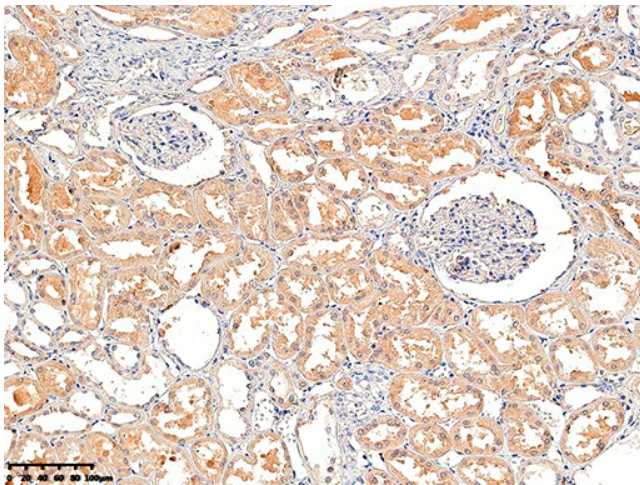
Product Type:	Primary Antibodies
Clone Name:	OTIR2E4
Applications:	IHC
Recommended Dilution:	IHC 1:2000
Reactivity:	Human
Host:	Rabbit
Isotype:	IgG
Clonality:	Monoclonal
Immunogen:	Full length human recombinant protein of human PNPLA3(NP_079501) produced in E.coli.
Formulation:	PBS (pH 7.3) containing 1% BSA, 50% glycerol and 0.02% sodium azide.
Concentration:	1 mg/ml
Purification:	Purified from mouse ascites fluids or tissue culture supernatant by affinity chromatography (protein A/G)
Conjugation:	Unconjugated
Storage:	Shipped at -20°C or with ice packs, Upon delivery store at -20°C. Dilute in PBS(pH7.3) if necessary. Stable for 12 months from date of receipt. Avoid repeated freeze-thaws.
Predicted Protein Size:	52.8 kDa
Gene Name:	patatin like phospholipase domain containing 3
Database Link:	NP_079501 Entrez Gene 80339 Human Q9NST1
Background:	The protein encoded by this gene is a triacylglycerol lipase that mediates triacylglycerol hydrolysis in adipocytes. The encoded protein, which appears to be membrane bound, may be involved in the balance of energy usage/storage in adipocytes. [provided by RefSeq, Jul 2008]
Synonyms:	ADPN; C22orf20; iPLA(2)epsilon



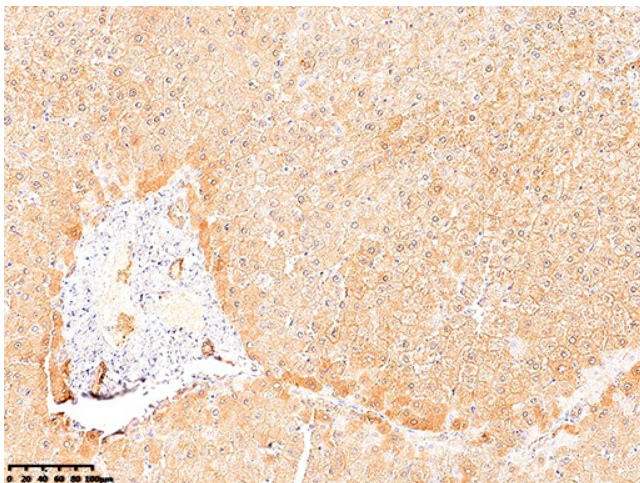
[View online »](#)

Protein Pathways: Glycerolipid metabolism, Glycerophospholipid metabolism, Limonene and pinene degradation, Metabolic pathways, Phenylalanine metabolism, Tyrosine metabolism

Product images:



IHC staining of FFPE human kidney tissue within the normal limits using anti-PNPLA3 rabbit monoclonal antibody ([TA592964]) and Polink-2 HRP polymer detection kit ([D22-110]). Heat-induced epitope retrieval by EDTA solution buffer pH 8.0 ([B04C-100]) at 120°C for 3 min. The brown stain indicates positive stain, blue is the counter stain.(1:2000)



IHC staining of FFPE human liver tissue within the normal limits using anti-PNPLA3 rabbit monoclonal antibody ([TA592964]) and Polink-2 HRP polymer detection kit ([D22-110]). Heat-induced epitope retrieval by EDTA solution buffer pH 8.0 ([B04C-100]) at 120°C for 3 min. The brown stain indicates positive stain, blue is the counter stain.(1:2000)