

Product datasheet for **TA592936S**

TREM2 Rabbit Monoclonal Antibody [Clone ID: OTIR4F7]

Product data:

Product Type:	Primary Antibodies
Clone Name:	OTIR4F7
Applications:	WB
Recommended Dilution:	WB 1:2000
Reactivity:	Human
Host:	Rabbit
Isotype:	IgG
Clonality:	Monoclonal
Immunogen:	Synthetic peptide (the amino acid sequence is considered to be commercially sensitive) within Human TREM2 (NP_061838). The exact sequence is proprietary.
Formulation:	PBS (pH 7.3) containing 1% BSA, 50% glycerol and 0.02% sodium azide.
Concentration:	1 mg/ml
Purification:	Purified from mouse ascites fluids or tissue culture supernatant by affinity chromatography (protein A/G)
Conjugation:	Unconjugated
Storage:	Shipped at -20°C or with ice packs, Upon delivery store at -20°C. Dilute in PBS(pH7.3) if necessary. Stable for 12 months from date of receipt. Avoid repeated freeze-thaws.
Predicted Protein Size:	23.4 kDa
Gene Name:	triggering receptor expressed on myeloid cells 2
Database Link:	NP_061838 Entrez Gene 54209 Human Q9NZC2



[View online »](#)

Background:

This gene encodes a membrane protein that forms a receptor signaling complex with the TYRO protein tyrosine kinase binding protein. The encoded protein functions in immune response and may be involved in chronic inflammation by triggering the production of constitutive inflammatory cytokines. Defects in this gene are a cause of polycystic lipomembranous osteodysplasia with sclerosing leukoencephalopathy (PLOSL). Alternative splicing results in multiple transcript variants encoding different isoforms. [provided by RefSeq, Nov 2012]

Synonyms:

PLOSL2; TREM-2; Trem2a; Trem2b; Trem2c

Protein Families:

Druggable Genome, Secreted Protein, Transmembrane

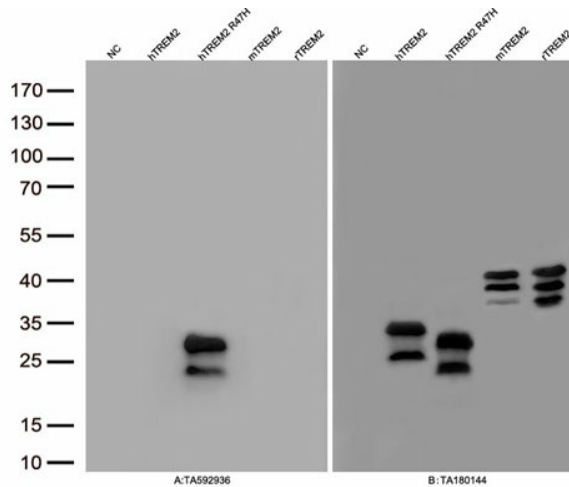
Product images:


Figure A, Western blot analysis of overexpressed lysates(15ug per lane) from HEK293T cells transfected with empty plasmid ([PS100001], NC), human TREM2 protein fragment plasmid (hTREM2), human TREM2 R47H protein fragment plasmid (hTREM2 R47H),mouse TREM2 plasmid ([MR228773], mTREM2), rat TREM2 plasmid ([RR204747], rTREM2) using anti-TREM2 R47H antibody [TA592936](1:2000). Figure B, Western blot analysis of the same samples as figure A with anti-DDK antibody ([TA180144], 1:1000) (NC,mTREM2,rTREM2) and anti-His antibody ([TA150088], 1:500)(hTREM2, hTREM2 R47H)