

Product datasheet for **TA592836S**

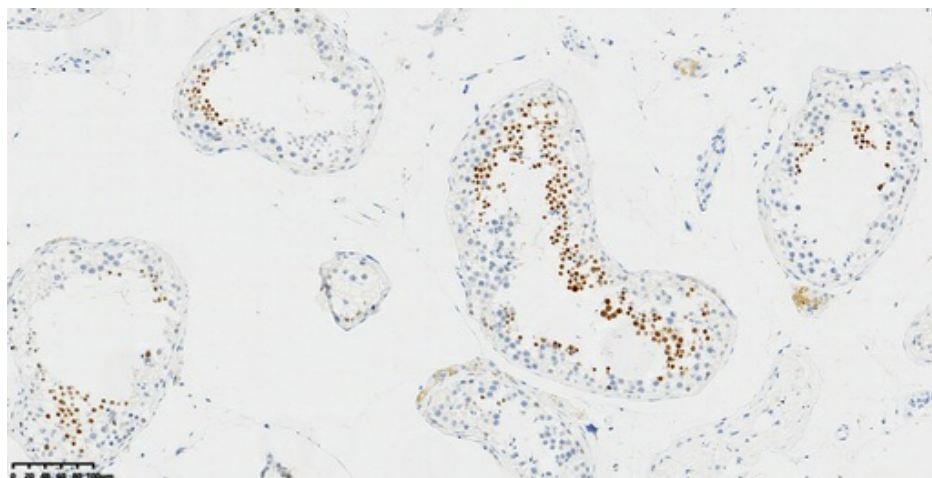
NUT (NUTM1) Rabbit Monoclonal Antibody [Clone ID: OTIR6H1]

Product data:

Product Type:	Primary Antibodies
Clone Name:	OTIR6H1
Applications:	IHC
Recommended Dilution:	IHC 1:1200
Reactivity:	Human
Host:	Rabbit
Isotype:	IgG
Clonality:	Monoclonal
Immunogen:	Synthetic peptide (the amino acid sequence is considered to be commercially sensitive) within Human NUT (NP_001271221.2). The exact sequence is proprietary.
Formulation:	PBS (pH 7.3) containing 1% BSA, 50% glycerol and 0.02% sodium azide.
Concentration:	1.00mg/ml
Purification:	Purified from mouse ascites fluids or tissue culture supernatant by affinity chromatography (protein A/G)
Conjugation:	Unconjugated
Storage:	Shipped at -20°C or with ice packs, Upon delivery store at -20°C. Dilute in PBS(pH7.3) if necessary. Stable for 12 months from date of receipt. Avoid repeated freeze-thaws.
Predicted Protein Size:	123.8 kDa
Gene Name:	NUT midline carcinoma family member 1
Database Link:	NP_001271221 Entrez Gene 256646 Human Q86Y26
Background:	Plays a role in the regulation of proliferation. Regulates TERT expression by modulating SP1 binding to TERT promoter binding sites.[UniProtKB/Swiss-Prot Function]
Synonyms:	C15orf55; FAM22H; NUT



[View online »](#)

Product images:

IHC staining of FFPE human testis tissue with in the normal limits using anti-NUT rabbit monoclonal antibody ([TA592836]) and Polink-2 HRP polymer detection kit ([D22-110]). Heat-induced epitope retrieval by EDTA solution buffer pH 8.0 ([B04C-100]) at 120°C for 3 min. The brown stain indicates positive stain, blue is the counter stain.