

Product datasheet for **TA592756S**

PSCA Rabbit Monoclonal Antibody [Clone ID: OTIR4B1]

Product data:

Product Type:	Primary Antibodies
Clone Name:	OTIR4B1
Applications:	IHC, WB
Recommended Dilution:	WB 1:3000, IHC 1:300
Reactivity:	Human
Host:	Rabbit
Isotype:	IgG
Clonality:	Monoclonal
Immunogen:	Synthetic peptide (the amino acid sequence is considered to be commercially sensitive) within Human PSCA (NP_005663). The exact sequence is proprietary.
Formulation:	PBS (pH 7.3) containing 1% BSA, 50% glycerol and 0.02% sodium azide.
Concentration:	1 mg/ml
Purification:	Purified from mouse ascites fluids or tissue culture supernatant by affinity chromatography (protein A/G)
Conjugation:	Unconjugated
Storage:	Shipped at -20°C or with ice packs, Upon delivery store at -20°C. Dilute in PBS(pH7.3) if necessary. Stable for 12 months from date of receipt. Avoid repeated freeze-thaws.
Predicted Protein Size:	12.9 kDa
Gene Name:	prostate stem cell antigen
Database Link:	NP_005663 Entrez Gene 8000 Human O43653



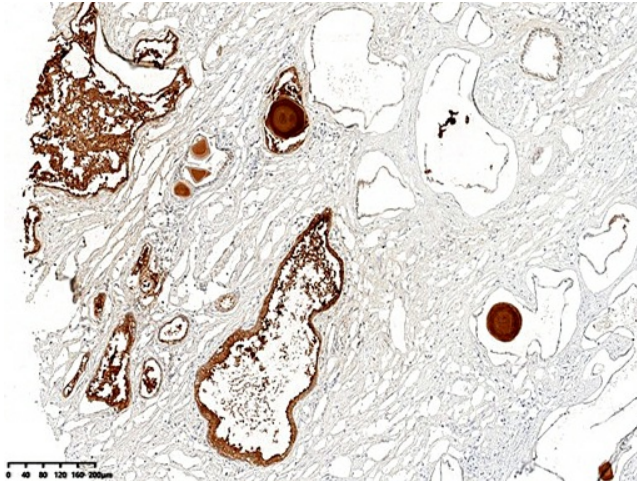
[View online »](#)

Background:

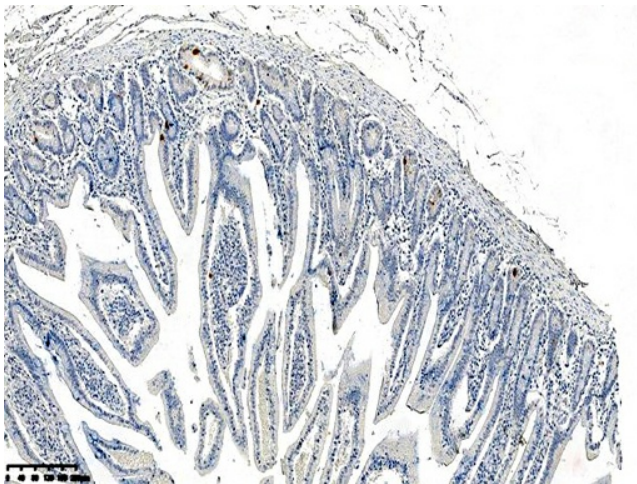
This gene encodes a glycosylphosphatidylinositol-anchored cell membrane glycoprotein. In addition to being highly expressed in the prostate it is also expressed in the bladder, placenta, colon, kidney, and stomach. This gene is up-regulated in a large proportion of prostate cancers and is also detected in cancers of the bladder and pancreas. This gene includes a polymorphism that results in an upstream start codon in some individuals; this polymorphism is thought to be associated with a risk for certain gastric and bladder cancers. Alternative splicing results in multiple transcript variants. [provided by RefSeq, Feb 2010]

Synonyms:

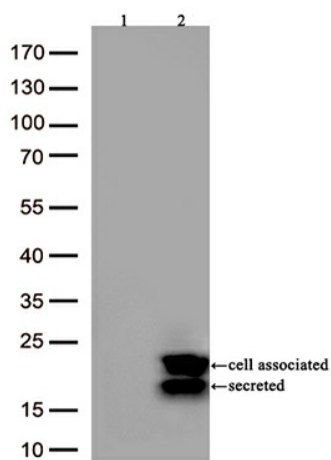
PRO232

Product images:

IHC staining of FFPE human prostatic hyperplasia tissue using anti-PSCA rabbit monoclonal antibody ([TA592756]) and Polink-2 HRP polymer detection kit ([D22-110]). Heat-induced epitope retrieval by EDTA solution buffer pH 8.0 ([B04C-100]) at 120°C for 3 min. The brown stain indicates positive stain, blue is the counter stain.



IHC staining of FFPE human duodenum tissue within the normal limits using anti-PSCA rabbit monoclonal antibody ([TA592756]) and Polink-2 HRP polymer detection kit ([D22-110]). Heat-induced epitope retrieval by EDTA solution buffer pH 8.0 ([B04C-100]) at 120°C for 3 min. The brown stain indicates positive stain, blue is the counter stain.



Western blot analysis of overexpressed lysates (15ug per lane) from HEK293T cells transfected with empty plasmid ([PS100001], lane 1), human PSCA plasmid ([RC209136], lane 2) using anti-PSCA antibody [TA592756] (1:3000).