

Product datasheet for **TA592642S**

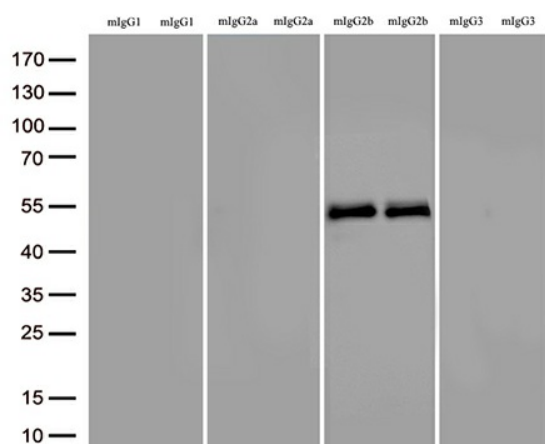
mlgG2b Fcy Fragment Specific Rabbit monoclonal antibody,OTIR13C2

Product data:

Product Type:	Secondary Antibodies
Product Name:	mlgG2b Fcy Fragment Specific Rabbit monoclonal antibody,OTIR13C2
Clone Name:	OTIR13C2
Applications:	ELISA, WB
Recommended Dilution:	WB 1:2000, ELISA 1:5000-1:20000
Reactivity:	Mouse
Host:	Rabbit
Immunogen:	Native protein
Isotype:	IgG
Formulation:	PBS (pH 7.3) containing 1% BSA, 50% glycerol and 0.02% sodium azide.
Concentration:	1 mg/ml
Purification:	Purified from mouse ascites fluids or tissue culture supernatant by affinity chromatography (protein A/G)
Conjugation:	Unconjugated
Storage:	Shipped at -20°C or with ice packs, Upon delivery store at -20°C. Dilute in PBS(pH7.3) if necessary. Stable for 12 months from date of receipt. Avoid repeated freeze-thaws.



[View online »](#)

Product images:

Immunoblot analysis of randomly picked 8 different lysates containing 4 different mouse IgG isotype (IgG1, IgG2a, IgG2b, IgG3) with [TA592642] at 1:2000. The 8 lysates came from different sources.