

## Product datasheet for **TA592638**

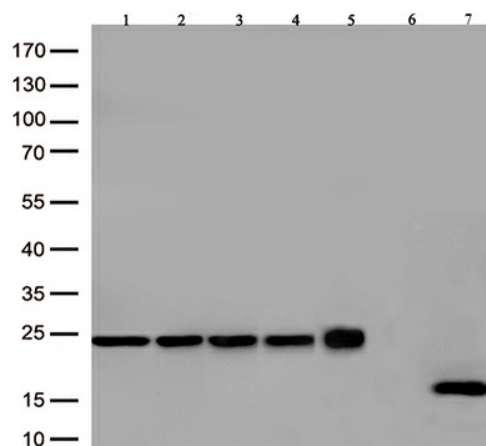
### **mlgG (1,2a,2b,3) Rabbit Monoclonal Antibody [Clone ID: OTIR12F3]**

#### **Product data:**

<b>Product Type:</b>	Primary Antibodies
<b>Clone Name:</b>	OTIR12F3
<b>Applications:</b>	ELISA, WB
<b>Recommended Dilution:</b>	WB 1:2000, ELISA 1:5000-1:20000
<b>Reactivity:</b>	Mouse
<b>Host:</b>	Rabbit
<b>Isotype:</b>	IgG
<b>Clonality:</b>	Monoclonal
<b>Immunogen:</b>	Native protein
<b>Formulation:</b>	PBS (pH 7.3) containing 1% BSA, 50% glycerol and 0.02% sodium azide.
<b>Concentration:</b>	1 mg/ml
<b>Purification:</b>	Purified from mouse ascites fluids or tissue culture supernatant by affinity chromatography (protein A/G)
<b>Conjugation:</b>	Unconjugated
<b>Storage:</b>	Shipped at -20°C or with ice packs, Upon delivery store at -20°C. Dilute in PBS(pH7.3) if necessary. Stable for 12 months from date of receipt. Avoid repeated freeze-thaws.
<b>Predicted Protein Size:</b>	25 kD
<b>Background:</b>	Immunoglobulin G (IgG) is the predominant antibody class present in mouse and human serum. It is also the main class used in development of antibody therapies, especially those for cancer. IgG is also used to treat immune deficiencies and autoimmune diseases in the form of intravenous immunoglobulin (IVIg), generated from a plasma pool of thousands of donors. Human IgG can be divided in 4 subclasses, IgG1, IgG2, IgG3 and IgG4, and mouse in IgG1, IgG2a, IgG2b and IgG3, with IgG2c being the equivalent of IgG2a in some mouse strains such as C47Bl/6 mice. All subclasses mediate effector functions slightly different due to variable specificity and affinity for the different IgG binding partners mentioned above. Most of the currently approved therapeutic monoclonal antibodies are IgG1, but also IgG2 and IgG4 are used. IgG2 and IgG4 are preferred when Fc-mediated effector functions are not needed or not preferred, as these subclasses bind with lower affinity to the FcγR and activate complement less actively.



[View online »](#)

**Product images:**

Immunoblot analysis of 7 different lysates containing 4 different mouse IgG kappa light chain isotypes (Lane 1. IgG1; 2. IgG2a; 3. IgG2b; 4. IgG3) and 3 different proteins (Lane 5. Mouse IgG F(ab)'2; 6. Mouse lambda chain constant region; 7. Mouse kappa chain constant region) with TA592638 at 1:2000.