

Product datasheet for **TA592626S**

hlgG1 and hlgG2 and hlgG3 F(ab')₂ Fragment Specific Rabbit monoclonal antibody,OTIR4H6

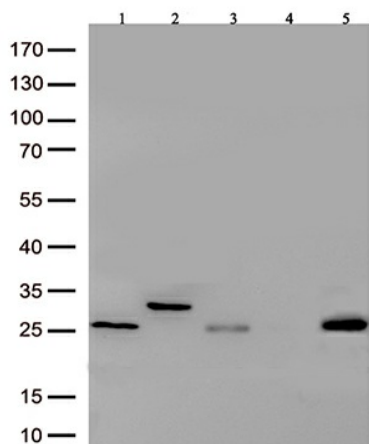
Product data:

Product Type:	Secondary Antibodies
Product Name:	hlgG1 and hlgG2 and hlgG3 F(ab') ₂ Fragment Specific Rabbit monoclonal antibody,OTIR4H6
Clone Name:	OTIR4H6
Applications:	ELISA, WB
Recommended Dilution:	WB 1:2000, ELISA 1:5000-1:20000
Reactivity:	Human
Host:	Rabbit
Immunogen:	Native protein
Isotype:	IgG
Formulation:	PBS (pH 7.3) containing 1% BSA, 50% glycerol and 0.02% sodium azide.
Concentration:	1 mg/ml
Purification:	Purified from mouse ascites fluids or tissue culture supernatant by affinity chromatography (protein A/G)
Conjugation:	Unconjugated
Storage:	Shipped at -20°C or with ice packs, Upon delivery store at -20°C. Dilute in PBS(pH7.3) if necessary. Stable for 12 months from date of receipt. Avoid repeated freeze-thaws.



[View online »](#)

Product images:



Immunoblot analysis of 5 different native protein (Lane 1.Human IgG1; 2.Human IgG2; 3.Human IgG3; 4.Human IgG4; 5.Native Human IgG F(ab)₂) with [TA592626] at 1:2000.