

Product datasheet for **TA592621S**

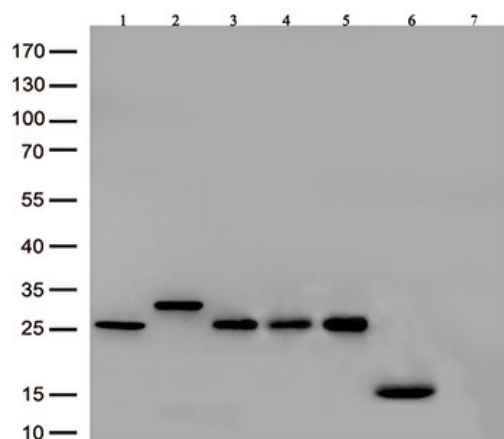
hlgG Kappa light chain Specific Rabbit monoclonal antibody, OTIR1G7

Product data:

Product Type:	Secondary Antibodies
Product Name:	hlgG Kappa light chain Specific Rabbit monoclonal antibody, OTIR1G7
Clone Name:	OTIR1G7
Applications:	ELISA, WB
Recommended Dilution:	WB 1:2000, ELISA 1:5000-1:20000
Reactivity:	Human
Host:	Rabbit
Immunogen:	Native protein
Isotype:	IgG
Formulation:	PBS (pH 7.3) containing 1% BSA, 50% glycerol and 0.02% sodium azide.
Concentration:	1 mg/ml
Purification:	Purified from mouse ascites fluids or tissue culture supernatant by affinity chromatography (protein A/G)
Conjugation:	Unconjugated
Storage:	Shipped at -20°C or with ice packs, Upon delivery store at -20°C. Dilute in PBS(pH7.3) if necessary. Stable for 12 months from date of receipt. Avoid repeated freeze-thaws.



[View online »](#)

Product images:

Immunoblot analysis of 7 different lysates (Lane 1.Human IgG1; 2.Human IgG2; 3.Human IgG3;4.Human IgG4; 5.Human IgG F(ab)'2; 6.human Kappa chain constant region; 7.Human Lambda chain constant region) with [TA592621] at 1:2000.