

## Product datasheet for **TA592572S**

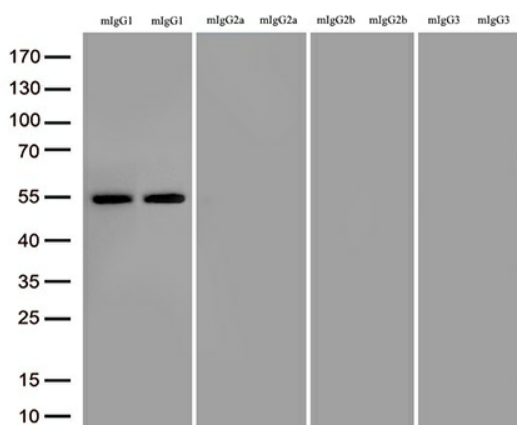
### **mlgG1 Fcy Fragment Specific Rabbit monoclonal antibody,clone OTIR8A7**

#### **Product data:**

<b>Product Type:</b>	Secondary Antibodies
<b>Product Name:</b>	mlgG1 Fcy Fragment Specific Rabbit monoclonal antibody,clone OTIR8A7
<b>Clone Name:</b>	OTIR8A7
<b>Applications:</b>	ELISA, WB
<b>Recommended Dilution:</b>	WB 1:2000, ELISA 1:5000-1:20000
<b>Reactivity:</b>	Mouse
<b>Host:</b>	Rabbit
<b>Immunogen:</b>	Native protein
<b>Isotype:</b>	IgG
<b>Formulation:</b>	PBS (pH 7.3) containing 1% BSA, 50% glycerol and 0.02% sodium azide.
<b>Concentration:</b>	1 mg/ml
<b>Purification:</b>	Purified from mouse ascites fluids or tissue culture supernatant by affinity chromatography (protein A/G)
<b>Conjugation:</b>	Unconjugated
<b>Storage:</b>	Shipped at -20°C or with ice packs, Upon delivery store at -20°C. Dilute in PBS(pH7.3) if necessary. Stable for 12 months from date of receipt. Avoid repeated freeze-thaws.



[View online »](#)

**Product images:**

Immunoblot analysis of randomly picked 8 different lysates containing 4 different mouse IgG isotype (IgG1, IgG2a, IgG2b, IgG3) with [TA592572] at 1:2000. The 8 lysates came from different sources.