

## Product datasheet for **TA592399S**

### **SNF5 (SMARCB1) Rabbit Monoclonal Antibody [Clone ID: OTIR4G9]**

#### **Product data:**

|                                |  |
|--------------------------------|--|
| <b>Product Type:</b>           | Primary Antibodies   |
| <b>Clone Name:</b>             | OTIR4G9  |
| <b>Applications:</b>           | IHC  |
| <b>Recommended Dilution:</b>   | IHC 1:800  |
| <b>Reactivity:</b>             | Human  |
| <b>Host:</b>                   | Rabbit   |
| <b>Isotype:</b>                | IgG  |
| <b>Clonality:</b>              | Monoclonal   |
| <b>Immunogen:</b>              | Synthetic peptide (the amino acid sequence is considered to be commercially sensitive) within Human INI1 (NP_003064). The exact sequence is proprietary.                     |
| <b>Formulation:</b>            | PBS (pH 7.3) containing 1% BSA, 50% glycerol and 0.02% sodium azide.   |
| <b>Concentration:</b>          | 1.00mg/ml  |
| <b>Purification:</b>           | Purified from mouse ascites fluids or tissue culture supernatant by affinity chromatography (protein A/G)  |
| <b>Conjugation:</b>            | Unconjugated   |
| <b>Storage:</b>                | Shipped at -20°C or with ice packs, Upon delivery store at -20°C. Dilute in PBS(pH7.3) if necessary. Stable for 12 months from date of receipt. Avoid repeated freeze-thaws. |
| <b>Predicted Protein Size:</b> | 44 kDa   |
| <b>Gene Name:</b>              | SWI/SNF related, matrix associated, actin dependent regulator of chromatin, subfamily b, member 1  |
| <b>Database Link:</b>          | <a href="#">NP_003064</a><br><a href="#">Entrez Gene 6598 Human</a><br><a href="#">Q12824</a>  |



[View online »](#)

**Background:**

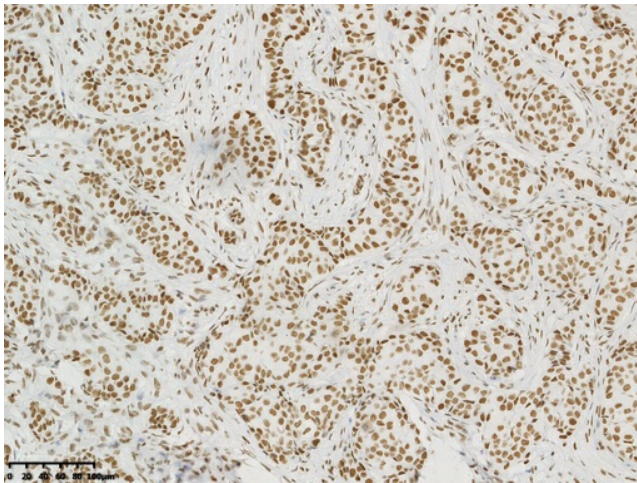
The protein encoded by this gene is part of a complex that relieves repressive chromatin structures, allowing the transcriptional machinery to access its targets more effectively. The encoded nuclear protein may also bind to and enhance the DNA joining activity of HIV-1 integrase. This gene has been found to be a tumor suppressor, and mutations in it have been associated with malignant rhabdoid tumors. Alternatively spliced transcript variants have been found for this gene. [provided by RefSeq, Dec 2015]

**Synonyms:**

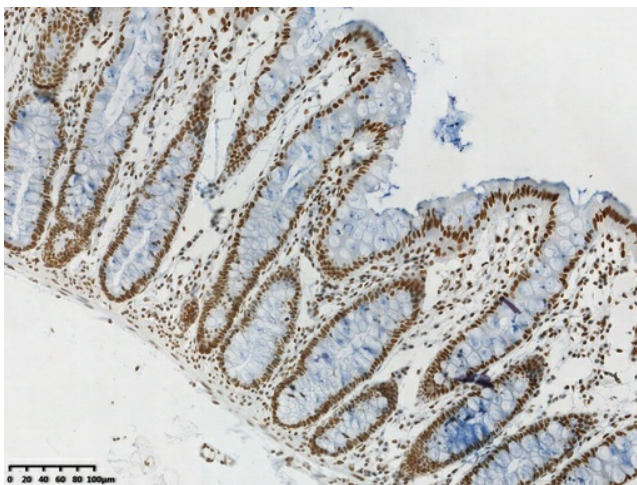
BAF47; CSS3; hSNFS; INI1; MRD15; PPP1R144; RDT; RTPS1; Sfh1p; SNF5; SNF5L1; Snr1; SWNTS1

**Protein Families:**

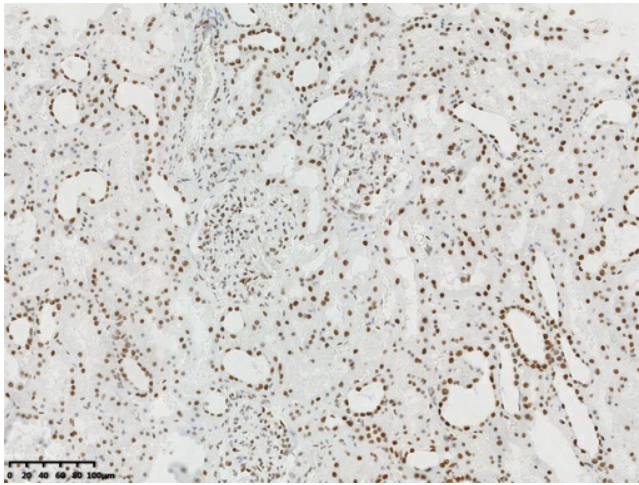
Transcription Factors

**Product images:**

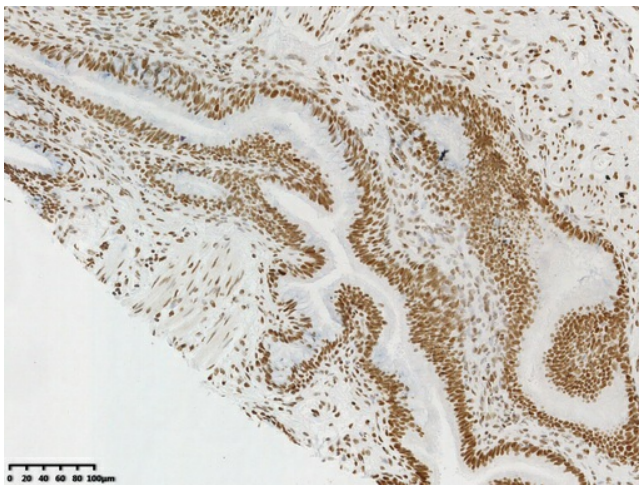
IHC staining of FFPE human breast cancer tissue using anti-INI1 rabbit monoclonal antibody ([TA592399]) and Polink-2 HRP polymer detection kit ([D22-110]). Heat-induced epitope retrieval by EDTA solution buffer pH 9.0 ([B06C-50]) at 120°C for 3 min. The brown stain indicates positive stain, blue is the counter stain.



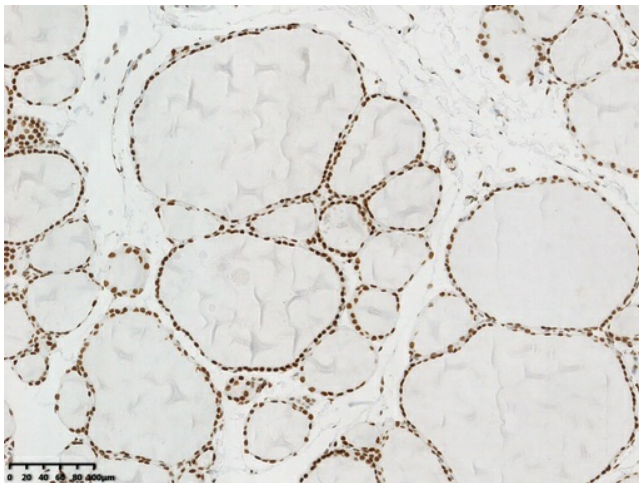
IHC staining of FFPE human colon tissue with in the normal limits using anti-INI1 rabbit monoclonal antibody ([TA592399]) and Polink-2 HRP polymer detection kit ([D22-110]). Heat-induced epitope retrieval by EDTA solution buffer pH 9.0 ([B06C-50]) at 120°C for 3 min. The brown stain indicates positive stain, blue is the counter stain.



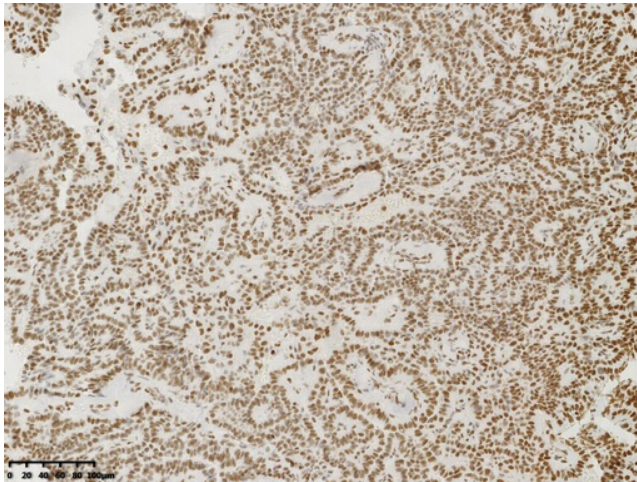
IHC staining of FFPE human kidney tissue with in the normal limits using anti-INI1 rabbit monoclonal antibody ([TA592399]) and Polink-2 HRP polymer detection kit ([D22-110]). Heat-induced epitope retrieval by EDTA solution buffer pH 9.0 ([B06C-50]) at 120°C for 3 min. The brown stain indicates positive stain, blue is the counter stain.



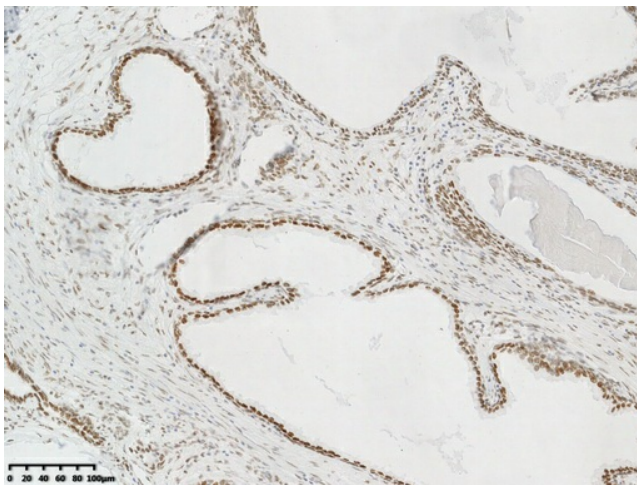
IHC staining of FFPE human lung cancer tissue using anti-INI1 rabbit monoclonal antibody ([TA592399]) and Polink-2 HRP polymer detection kit ([D22-110]). Heat-induced epitope retrieval by EDTA solution buffer pH 9.0 ([B06C-50]) at 120°C for 3 min. The brown stain indicates positive stain, blue is the counter stain.



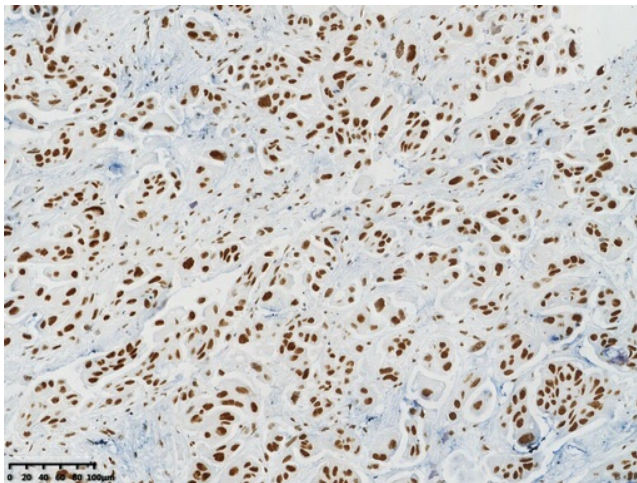
IHC staining of FFPE human thyroid tissue with in the normal limits using anti-INI1 rabbit monoclonal antibody ([TA592399]) and Polink-2 HRP polymer detection kit ([D22-110]). Heat-induced epitope retrieval by EDTA solution buffer pH 9.0 ([B06C-50]) at 120°C for 3 min. The brown stain indicates positive stain, blue is the counter stain.



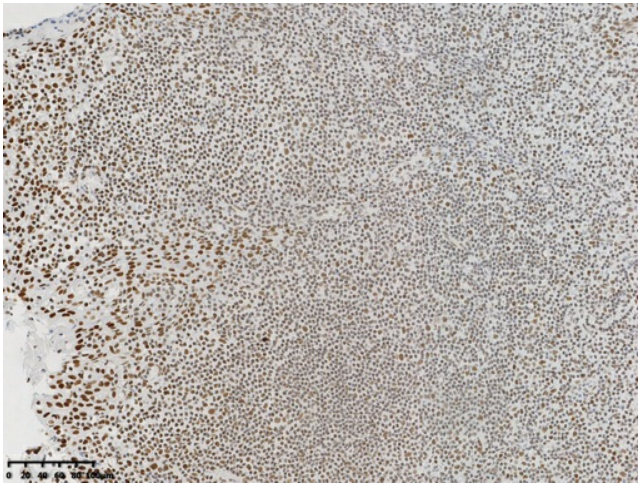
IHC staining of FFPE human thyroid cancer tissue using anti-INI1 rabbit monoclonal antibody ([TA592399]) and Polink-2 HRP polymer detection kit ([D22-110]). Heat-induced epitope retrieval by EDTA solution buffer pH 9.0 ([B06C-50]) at 120°C for 3 min. The brown stain indicates positive stain, blue is the counter stain.



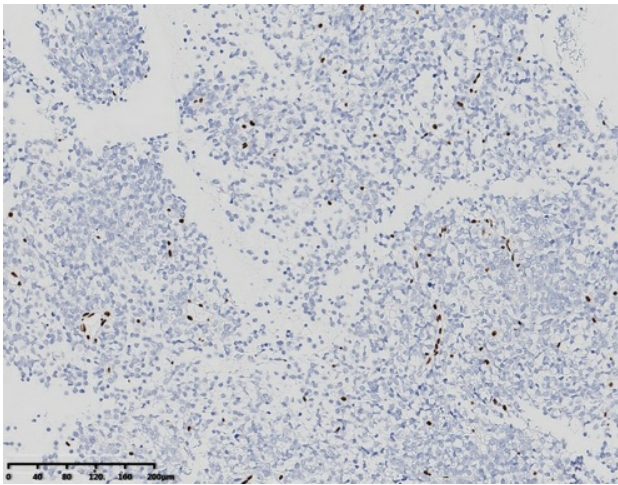
IHC staining of FFPE human prostate tissue with in the normal limits using anti-INI1 rabbit monoclonal antibody ([TA592399]) and Polink-2 HRP polymer detection kit ([D22-110]). Heat-induced epitope retrieval by EDTA solution buffer pH 9.0 ([B06C-50]) at 120°C for 3 min. The brown stain indicates positive stain, blue is the counter stain.



IHC staining of FFPE human prostate cancer tissue using anti-INI1 rabbit monoclonal antibody ([TA592399]) and Polink-2 HRP polymer detection kit ([D22-110]). Heat-induced epitope retrieval by EDTA solution buffer pH 9.0 ([B06C-50]) at 120°C for 3 min. The brown stain indicates positive stain, blue is the counter stain.



IHC staining of FFPE human tonsil tissue with in the normal limits using anti-INI1 rabbit monoclonal antibody ([TA592399]) and Polink-2 HRP polymer detection kit ([D22-110]). Heat-induced epitope retrieval by EDTA solution buffer pH 9.0 ([B06C-50]) at 120°C for 3 min. The brown stain indicates positive stain, blue is the counter stain.



IHC staining of FFPE human rhabdoid tumor tissue using anti-INI1 rabbit monoclonal antibody ([TA592399]) and Polink-2 HRP polymer detection kit ([D22-110]). Heat-induced epitope retrieval by EDTA solution buffer pH 9.0 ([B06C-50]) at 120°C for 3 min. The brown stain indicates positive stain, blue is the counter stain.