

Product datasheet for **TA592172S**

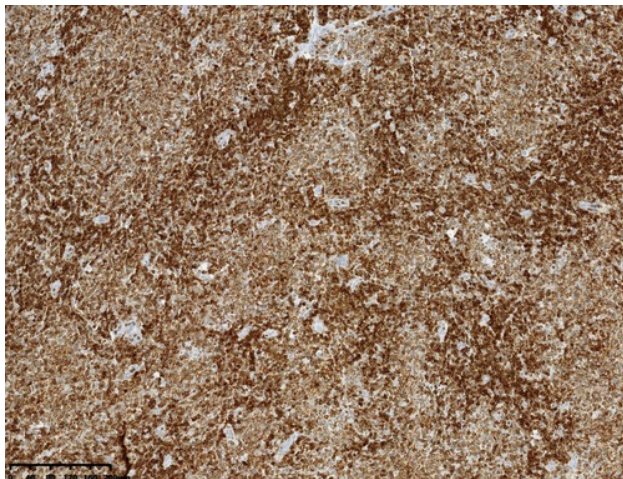
BCL2 Rabbit Monoclonal Antibody [Clone ID: OTIR9G7]

Product data:

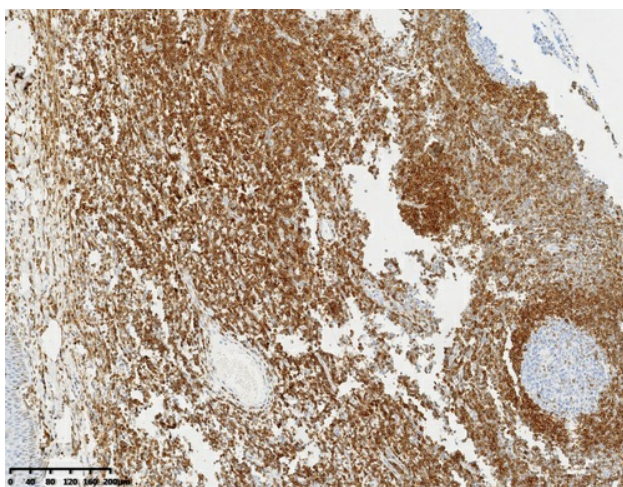
| | |
|------------------------------|--|
| Product Type: | Primary Antibodies |
| Clone Name: | OTIR9G7 |
| Applications: | IHC |
| Recommended Dilution: | IHC 1:1200 |
| Reactivity: | Mouse, Rat |
| Host: | Rabbit |
| Isotype: | IgG |
| Clonality: | Monoclonal |
| Immunogen: | Synthetic peptide corresponding to the N-terminus of Human BCL2 (NP_000624) conjugated to KLH. The exact sequence is proprietary. |
| Formulation: | PBS (pH 7.3) containing 1% BSA, 50% glycerol and 0.02% sodium azide. |
| Concentration: | 1 mg/ml |
| Purification: | Purified from mouse ascites fluids or tissue culture supernatant by affinity chromatography (protein A/G) |
| Conjugation: | Unconjugated |
| Storage: | Shipped at -20°C or with ice packs, Upon delivery store at -20°C. Dilute in PBS(pH7.3) if necessary. Stable for 12 months from date of receipt. Avoid repeated freeze-thaws. |



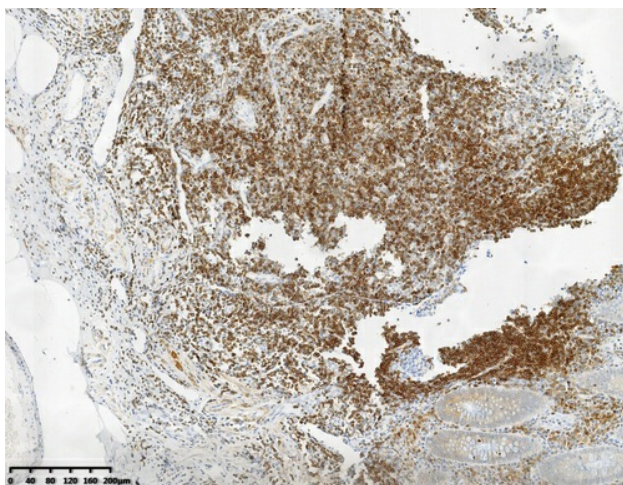
[View online »](#)

Product images:

Immunohistochemical staining of paraffin-embedded Human lymphoma tissue using anti-BCL2 rabbit monoclonal antibody. (Heat-induced epitope retrieval by 1mM EDTA in 10mM Tris buffer (pH8.0) at 120°C for 3 min, [TA592172]) (1:1200)



Immunohistochemical staining of paraffin-embedded Human tonsil within the normal limits using anti-BCL2 rabbit monoclonal antibody. (Heat-induced epitope retrieval by 1mM EDTA in 10mM Tris buffer (pH8.0) at 120°C for 3 min, [TA592172]) (1:1200)



Immunohistochemical staining of paraffin-embedded Human appendix tissue within the normal limits using anti-BCL2 rabbit monoclonal antibody. (Heat-induced epitope retrieval by 1mM EDTA in 10mM Tris buffer (pH8.0) at 120°C for 3 min, [TA592172]) (1:1200)