

## Product datasheet for **TA592169M**

### **P40 ( $\Delta$ Np63) Rabbit Monoclonal Antibody [Clone ID: OTIR3D12]**

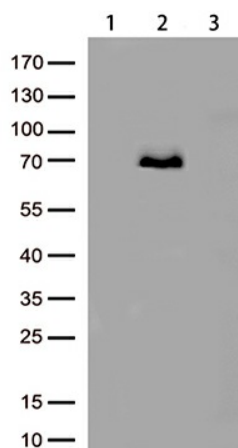
#### **Product data:**

Product Type:	Primary Antibodies
Clone Name:	OTIR3D12
Applications:	IHC, WB
Recommended Dilution:	IHC 1:30000; WB 1:1000
Host:	Rabbit
Isotype:	IgG
Clonality:	Monoclonal
Immunogen:	Synthetic peptide corresponding to the N-terminus of Human P40 ( $\Delta$ Np63) (NP_001108452) conjugated to KLH. The exact sequence is proprietary.
Formulation:	PBS (pH 7.3) containing 1% BSA, 50% glycerol and 0.02% sodium azide.
Concentration:	1 mg/ml
Purification:	Purified from mouse ascites fluids or tissue culture supernatant by affinity chromatography (protein A/G)
Conjugation:	Unconjugated
Storage:	Shipped at -20°C or with ice packs, Upon delivery store at -20°C. Dilute in PBS (pH7.3) if necessary. Stable for 12 months from date of receipt. Avoid repeated freeze-thaws.

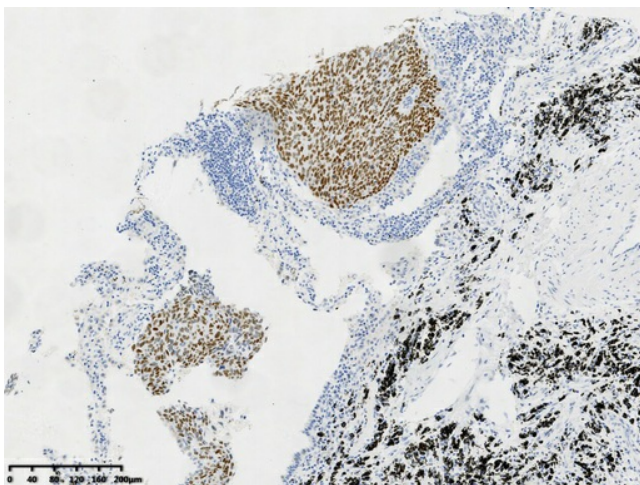


[View online »](#)

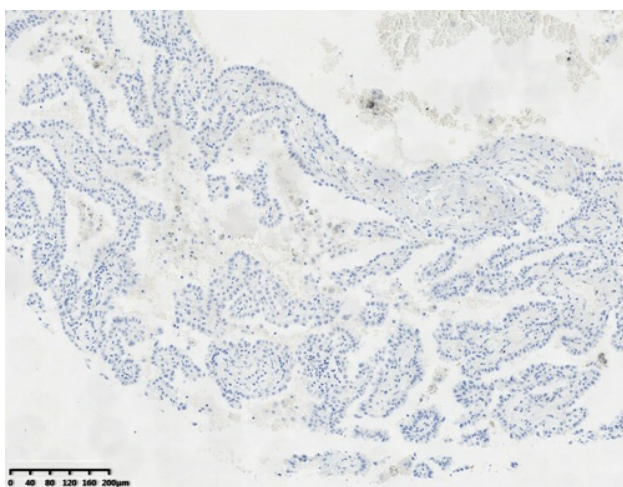
## Product images:



Western blot analysis of lysates from HEK293T cells transfected with P40 ( $\Delta$ Np63) (Lane 2, Cat# [RC225987]), TP63 overexpression plasmid (Lane 3, Cat# [RC208013]) or empty vector plasmid (Lane 1) using anti-P40 ( $\Delta$ Np63) antibody (Cat# [TA592169]). (1:1000)



Immunohistochemical staining of paraffin-embedded human lung squamous cell carcinoma tissue using anti-P40 ( $\Delta$ Np63) rabbit monoclonal antibody ([TA592169]). Heat-induced epitope retrieval by 1mM EDTA in 10mM Tris buffer (pH9.0) at 120°C for 3 min. (1:30000). Heat-induced epitope retrieval by EDTA solution buffer pH 8.0 at 120°C for 3 min.



Immunohistochemical staining of paraffin-embedded human lung adenocarcinoma tissue using anti-P40 ( $\Delta$ Np63) rabbit monoclonal antibody ([TA592169]). Heat-induced epitope retrieval by 1mM EDTA in 10mM Tris buffer (pH9.0) at 120°C for 3 min. (1:30000). Heat-induced epitope retrieval by EDTA solution buffer pH 8.0 at 120°C for 3 min.