

Product datasheet for **TA592167S**

P40 (Δ Np63) Rabbit Monoclonal Antibody [Clone ID: OTIR1A1]

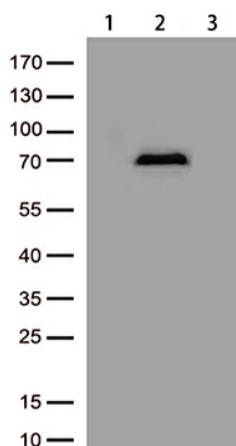
Product data:

Product Type:	Primary Antibodies
Clone Name:	OTIR1A1
Applications:	IHC, WB
Recommended Dilution:	IHC 1:35000; WB 1:1000
Host:	Rabbit
Isotype:	IgG
Clonality:	Monoclonal
Immunogen:	Synthetic peptide corresponding to the N-terminus of Human P40 (Δ Np63) (NP_001108452) conjugated to KLH. The exact sequence is proprietary.
Formulation:	PBS (pH 7.3) containing 1% BSA, 50% glycerol and 0.02% sodium azide.
Concentration:	1 mg/ml
Purification:	Purified from mouse ascites fluids or tissue culture supernatant by affinity chromatography (protein A/G)
Conjugation:	Unconjugated
Storage:	Shipped at -20°C or with ice packs, Upon delivery store at -20°C. Dilute in PBS(pH7.3) if necessary. Stable for 12 months from date of receipt. Avoid repeated freeze-thaws.

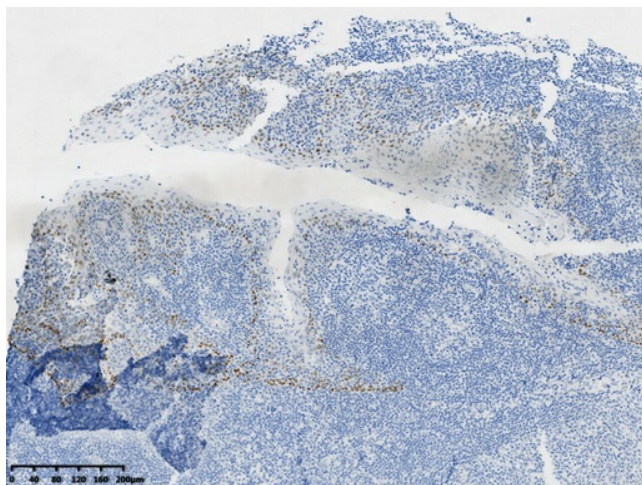


[View online »](#)

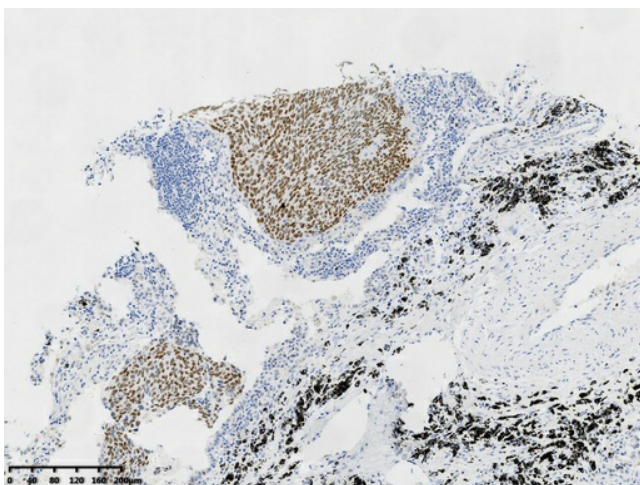
Product images:



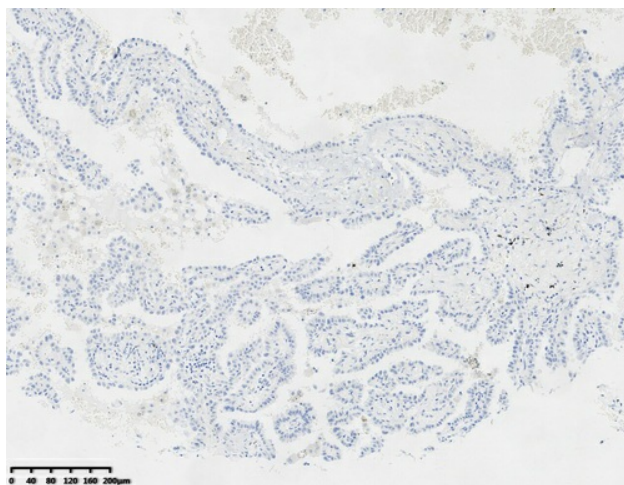
Western blot analysis of lysates from HEK293T cells transfected with P40 (Δ Np63) (Lane 2, Cat# [RC225987]), TP63 overexpression plasmid (Lane 3, Cat# [RC208013]) or empty vector plasmid (Lane 1) using anti-P40 (Δ Np63) antibody (Cat# [TA592167]). (1:1000)



Immunohistochemical staining of paraffin-embedded Human tonsil within the normal limits using anti-P40 (Δ Np63) rabbit monoclonal antibody ([TA592167]). Heat-induced epitope retrieval by 1mM EDTA in 10mM Tris buffer (pH9.0) at 120°C for 3 min. (1:35000)



Immunohistochemical staining of paraffin-embedded human lung squamous cell carcinoma tissue using anti-P40 (Δ Np63) rabbit monoclonal antibody ([TA592167]). Heat-induced epitope retrieval by 1mM EDTA in 10mM Tris buffer (pH9.0) at 120°C for 3 min. (1:35000)



Immunohistochemical staining of paraffin-embedded human lung adenocarcinoma tissue using anti-P40 (Δ Np63) rabbit monoclonal antibody ([TA592167]). Heat-induced epitope retrieval by 1mM EDTA in 10mM Tris buffer (pH9.0) at 120°C for 3 min. (1:35000)