

Product datasheet for **TA592133S**

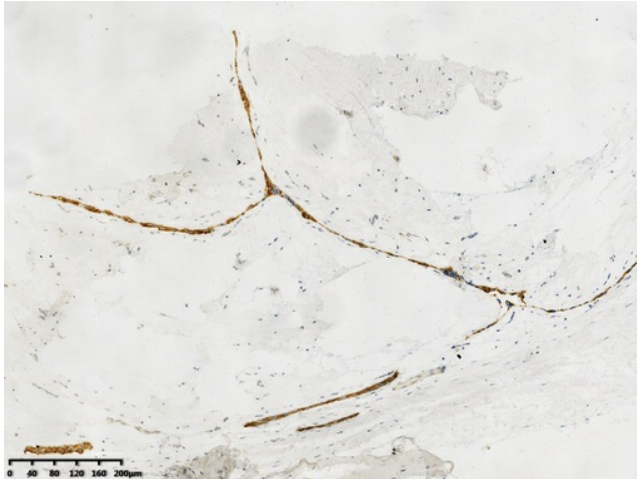
E-Cadherin(CDH1) Rabbit Monoclonal Antibody [Clone ID: OTIR1H6]

Product data:

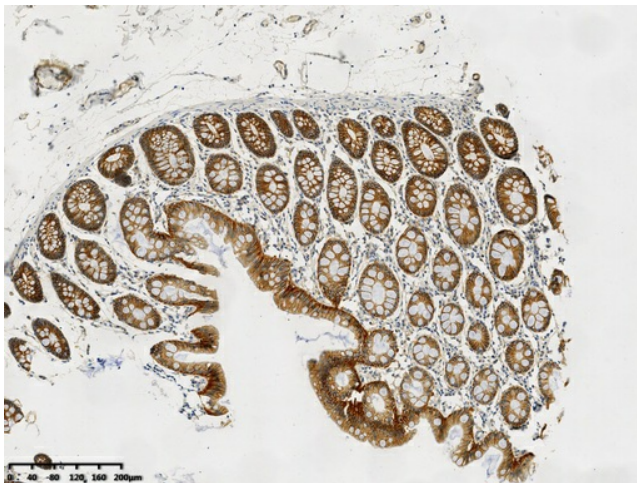
Product Type:	Primary Antibodies
Clone Name:	OTIR1H6
Applications:	IHC
Recommended Dilution:	IHC 1:100
Host:	Rabbit
Isotype:	IgG
Clonality:	Monoclonal
Immunogen:	Synthetic peptide (the amino acid sequence is considered to be commercially sensitive) within Human E-Cadherin(CDH1) (NP_004351). The exact sequence is proprietary.
Formulation:	PBS (pH 7.3) containing 1% BSA, 50% glycerol and 0.02% sodium azide.
Concentration:	1 mg/ml
Purification:	Purified from mouse ascites fluids or tissue culture supernatant by affinity chromatography (protein A/G)
Conjugation:	Unconjugated
Storage:	Shipped at -20°C or with ice packs, Upon delivery store at -20°C. Dilute in PBS(pH7.3) if necessary. Stable for 12 months from date of receipt. Avoid repeated freeze-thaws.



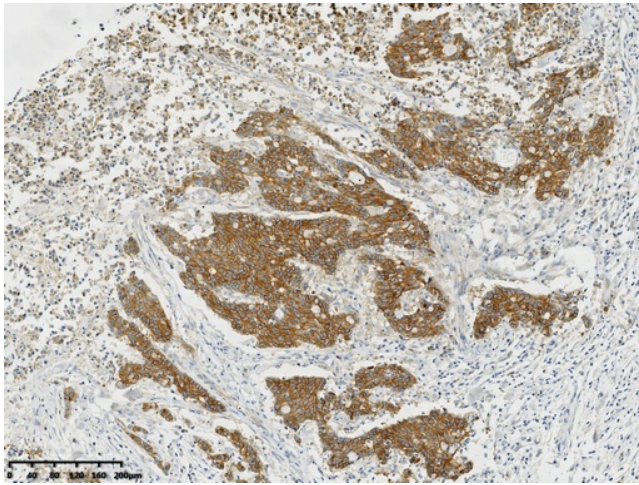
[View online »](#)

Product images:

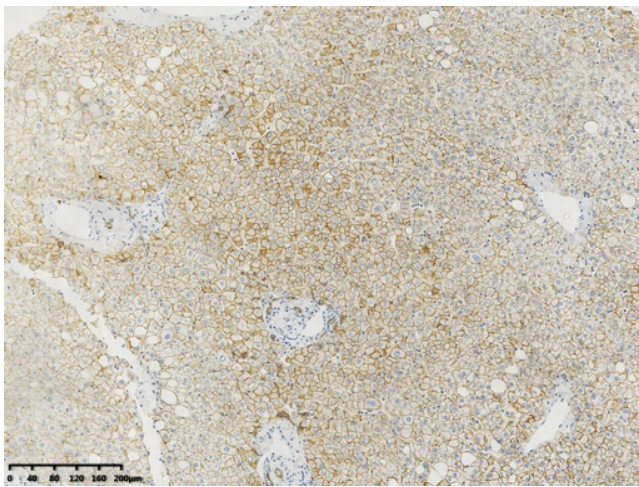
Immunohistochemical staining of paraffin-embedded Human breast tissue within the normal limits using anti-E-Cadherin (CDH1) rabbit monoclonal antibody. (Heat-induced epitope retrieval by 1mM EDTA in 10mM Tris buffer (pH8.0) at 120°C for 3 min, [TA592133]) (1:100)



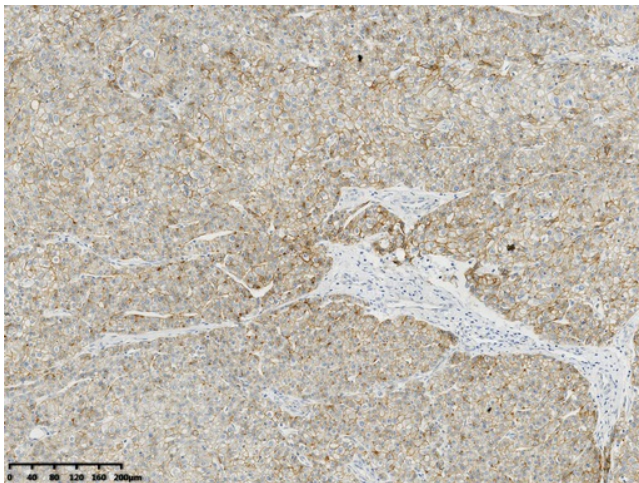
Immunohistochemical staining of paraffin-embedded Human colon tissue within the normal limits using anti-E-Cadherin (CDH1) rabbit monoclonal antibody. (Heat-induced epitope retrieval by 1mM EDTA in 10mM Tris buffer (pH8.0) at 120°C for 3 min, [TA592133]) (1:100)



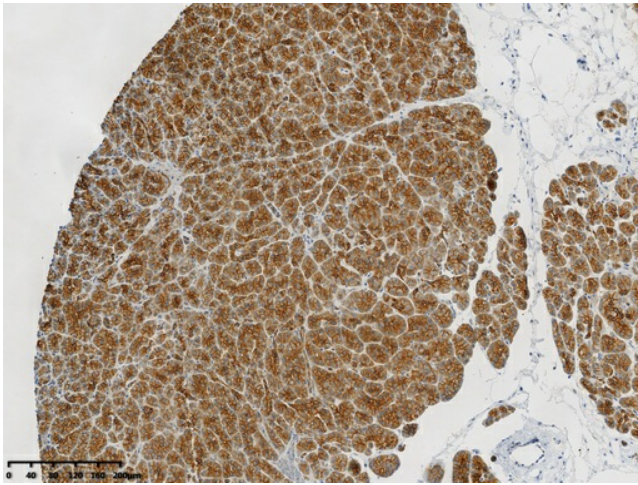
Immunohistochemical staining of paraffin-embedded Adenocarcinoma of Human colon tissue using anti-E-Cadherin (CDH1) rabbit monoclonal antibody. (Heat-induced epitope retrieval by 1mM EDTA in 10mM Tris buffer (pH8.0) at 120°C for 3 min, [TA592133]) (1:100)



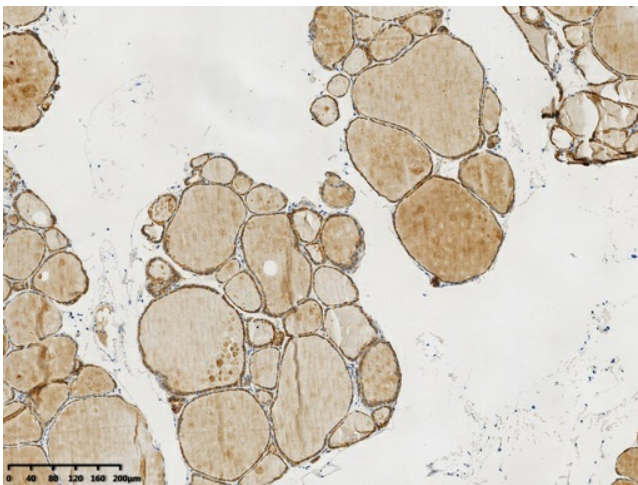
Immunohistochemical staining of paraffin-embedded Human liver tissue within the normal limits using anti-E-Cadherin (CDH1) rabbit monoclonal antibody. (Heat-induced epitope retrieval by 1mM EDTA in 10mM Tris buffer (pH8.0) at 120°C for 3 min, [TA592133]) (1:100)



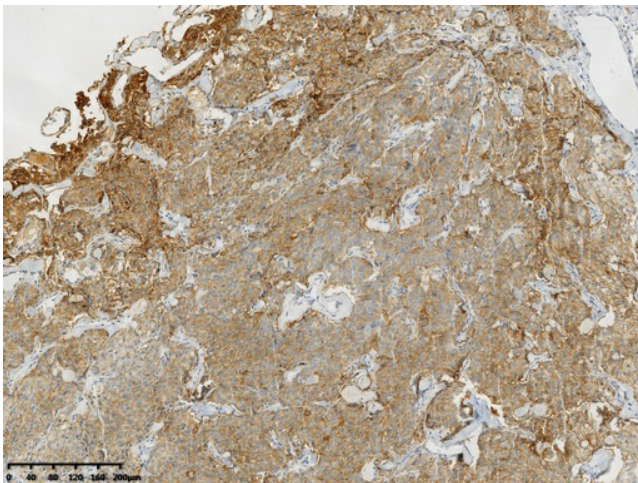
Immunohistochemical staining of paraffin-embedded Carcinoma of Human liver tissue using anti-E-Cadherin (CDH1) rabbit monoclonal antibody. (Heat-induced epitope retrieval by 1mM EDTA in 10mM Tris buffer (pH8.0) at 120°C for 3 min, [TA592133]) (1:100)



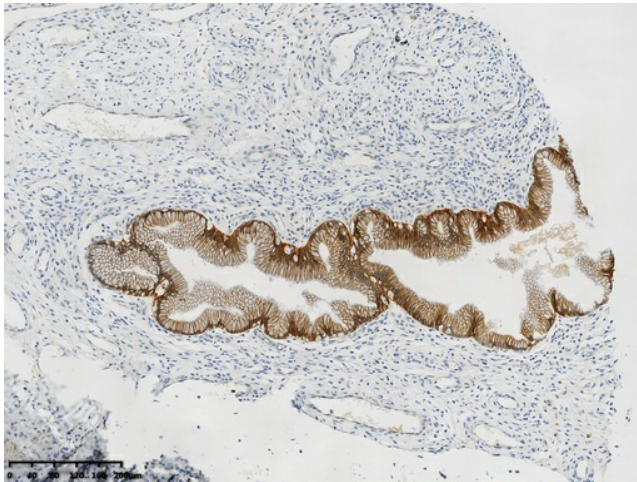
Immunohistochemical staining of paraffin-embedded Human pancreas tissue within the normal limits using anti-E-Cadherin (CDH1) rabbit monoclonal antibody. (Heat-induced epitope retrieval by 1mM EDTA in 10mM Tris buffer (pH8.0) at 120°C for 3 min, [TA592133]) (1:100)



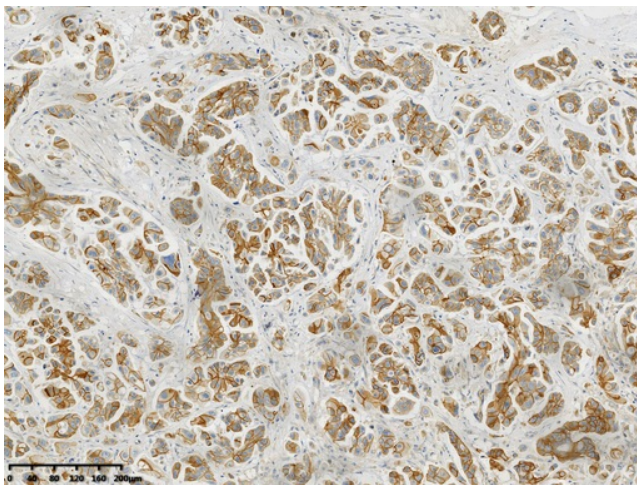
Immunohistochemical staining of paraffin-embedded Human thyroid tissue within the normal limits using anti-E-Cadherin (CDH1) rabbit monoclonal antibody. (Heat-induced epitope retrieval by 1mM EDTA in 10mM Tris buffer (pH8.0) at 120°C for 3 min, [TA592133]) (1:100)



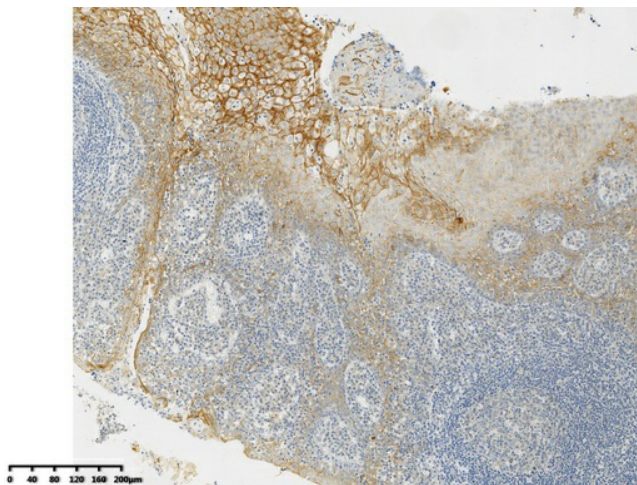
Immunohistochemical staining of paraffin-embedded Carcinoma of Human thyroid tissue using anti-E-Cadherin (CDH1) rabbit monoclonal antibody. (Heat-induced epitope retrieval by 1mM EDTA in 10mM Tris buffer (pH8.0) at 120°C for 3 min, [TA592133]) (1:100)



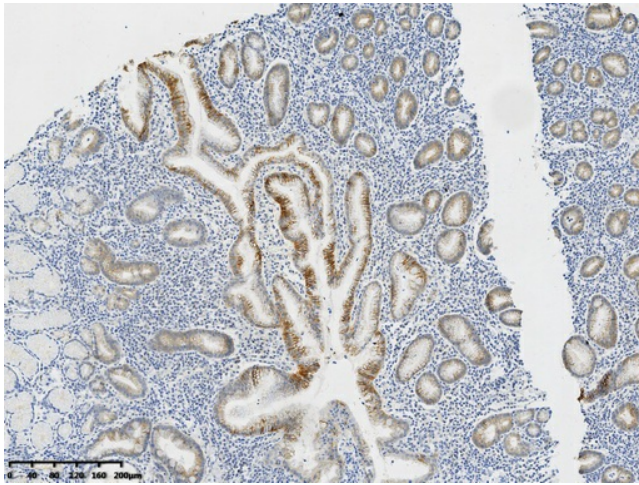
Immunohistochemical staining of paraffin-embedded Human endometrium tissue within the normal limits using anti-E-Cadherin (CDH1) rabbit monoclonal antibody. (Heat-induced epitope retrieval by 1mM EDTA in 10mM Tris buffer (pH8.0) at 120°C for 3 min, [TA592133]) (1:100)



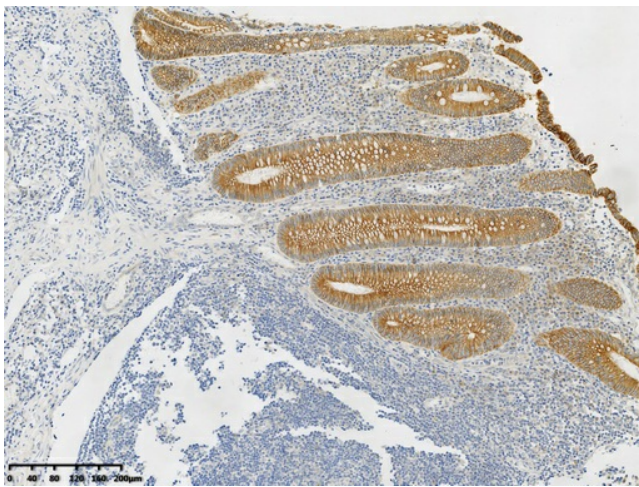
Immunohistochemical staining of paraffin-embedded Carcinoma of Human prostate tissue using anti-E-Cadherin (CDH1) rabbit monoclonal antibody. (Heat-induced epitope retrieval by 1mM EDTA in 10mM Tris buffer (pH8.0) at 120°C for 3 min, [TA592133]) (1:100)



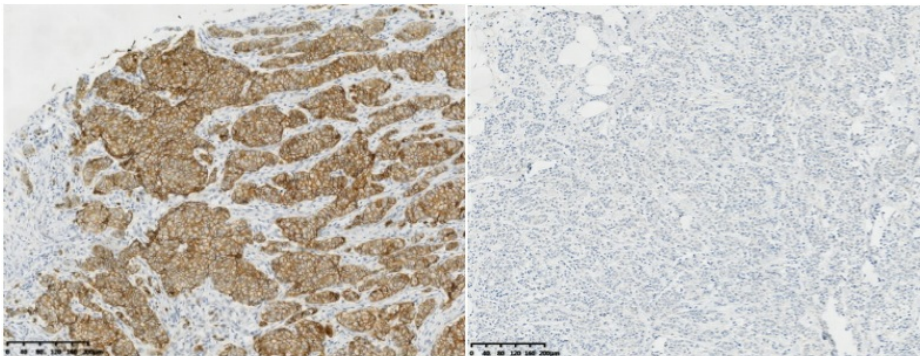
Immunohistochemical staining of paraffin-embedded Human tonsil within the normal limits using anti-E-Cadherin (CDH1) rabbit monoclonal antibody. (Heat-induced epitope retrieval by 1mM EDTA in 10mM Tris buffer (pH8.0) at 120°C for 3 min, [TA592133]) (1:100)



Immunohistochemical staining of paraffin-embedded Human gastric tissue within the normal limits using anti-E-Cadherin (CDH1) rabbit monoclonal antibody. (Heat-induced epitope retrieval by 1mM EDTA in 10mM Tris buffer (pH8.0) at 120°C for 3 min, [TA592133]) (1:100)



Immunohistochemical staining of paraffin-embedded Human appendix tissue within the normal limits using anti-E-Cadherin (CDH1) rabbit monoclonal antibody. (Heat-induced epitope retrieval by 1mM EDTA in 10mM Tris buffer (pH8.0) at 120°C for 3 min, [TA592133]) (1:100)



Immunohistochemical staining of paraffin-embedded breast duct carcinoma (left) and lobular carcinoma of the breast (right) using anti-E-Cadherin (CDH1) rabbit monoclonal antibody ([TA592133]). Heat-induced epitope retrieval by 1mM EDTA in 10mM Tris buffer (pH8.0) at 120°C for 3 min. (1:100)