

## Product datasheet for **TA592129S**

### **HNF1 beta (HNF1B) Rabbit Monoclonal Antibody [Clone ID: OTIR2E9]**

#### **Product data:**

Product Type:	Primary Antibodies
Clone Name:	OTIR2E9
Applications:	IHC
Recommended Dilution:	IHC 1:3500
Reactivity:	Human
Host:	Rabbit
Isotype:	IgG
Clonality:	Monoclonal
Immunogen:	Human recombinant protein fragment corresponding to the N-terminus of human HNF1-Beta(HNF1B) (NP_000449) produced in E.coli.
Formulation:	PBS (pH 7.3) containing 1% BSA, 50% glycerol and 0.02% sodium azide.
Concentration:	1.00mg/ml
Purification:	Purified from mouse ascites fluids or tissue culture supernatant by affinity chromatography (protein A/G)
Conjugation:	Unconjugated
Storage:	Shipped at -20°C or with ice packs, Upon delivery store at -20°C. Dilute in PBS(pH7.3) if necessary. Stable for 12 months from date of receipt. Avoid repeated freeze-thaws.
Predicted Protein Size:	61.3 kDa
Gene Name:	HNF1 homeobox B
Database Link:	<a href="#">NP_000449</a> <a href="#">Entrez Gene 6928 Human P35680</a>



[View online »](#)

**Background:**

This gene encodes a member of the homeodomain-containing superfamily of transcription factors. The protein binds to DNA as either a homodimer, or a heterodimer with the related protein hepatocyte nuclear factor 1-alpha. The gene has been shown to function in nephron development, and regulates development of the embryonic pancreas. Mutations in this gene result in renal cysts and diabetes syndrome and noninsulin-dependent diabetes mellitus, and expression of this gene is altered in some types of cancer. Multiple transcript variants encoding different isoforms have been found for this gene.[provided by RefSeq, Sep 2009].

**Synonyms:**

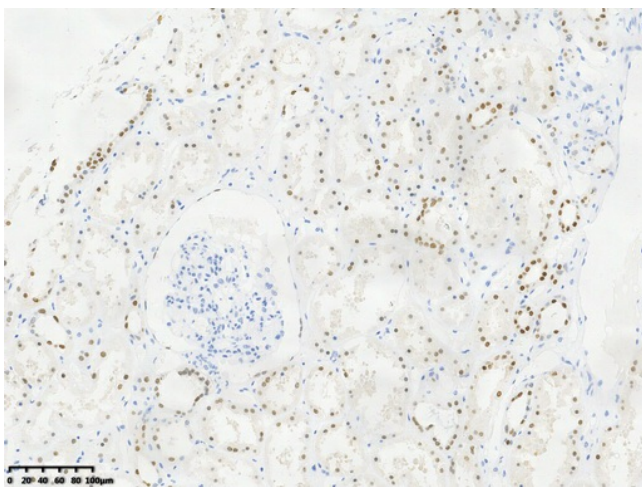
ADTKD3; FJHN; HNF-1-beta; HNF-1B; HNF1beta; HNF2; HPC11; LF-B3; LFB3; MODY5; RCAD; T2D; TCF-2; TCF2; VHNF1

**Protein Families:**

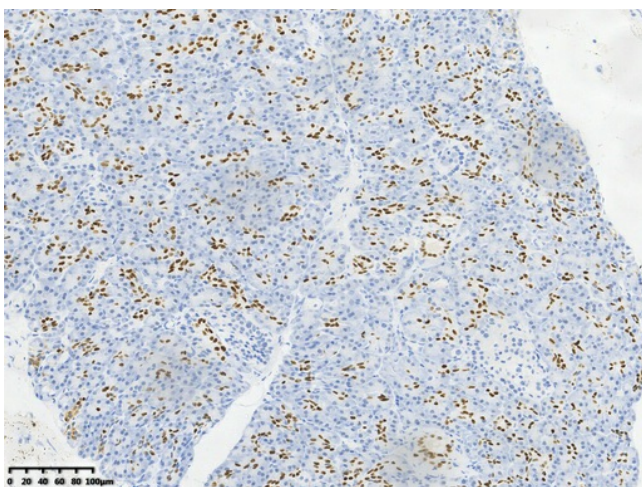
Druggable Genome, Embryonic stem cells, ES Cell Differentiation/IPS, Transcription Factors

**Protein Pathways:**

Maturity onset diabetes of the young

**Product images:**

IHC staining of FFPE human kidney tissue with in the normal limits using anti-HNF1B rabbit monoclonal antibody ([TA592129]) and Polink-2 HRP polymer detection kit ([D22-110]). Heat-induced epitope retrieval by EDTA solution buffer pH 8.0 ([B04C-100]) at 120°C for 3 min. The brown stain indicates positive stain, blue is the counter stain.



IHC staining of FFPE human pancreas tissue with in the normal limits using anti-HNF1B rabbit monoclonal antibody ([TA592129]) and Polink-2 HRP polymer detection kit ([D22-110]). Heat-induced epitope retrieval by EDTA solution buffer pH 8.0 ([B04C-100]) at 120°C for 3 min. The brown stain indicates positive stain, blue is the counter stain.