

Product datasheet for **TA591095**

CXCR4 Mouse Monoclonal Antibody [Clone ID: 772X122]

Product data:

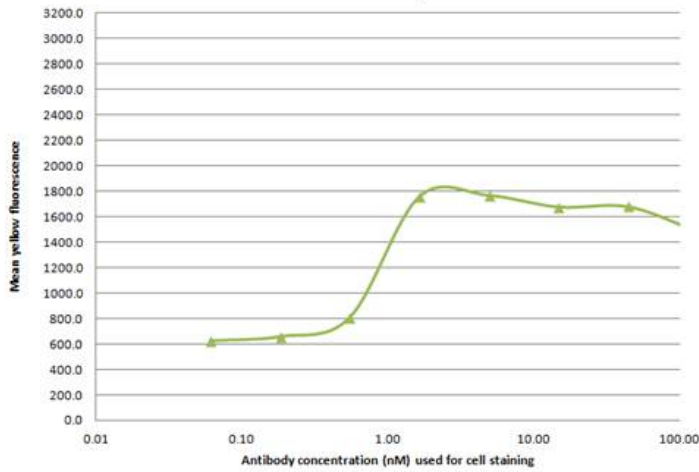
| | |
|-----------------------|--|
| Product Type: | Primary Antibodies |
| Clone Name: | 772X122 |
| Applications: | FC |
| Recommended Dilution: | Use at 0.1-1ug/ml. Flow , Antagonist |
| Reactivity: | Human |
| Host: | Mouse |
| Isotype: | IgG2a |
| Clonality: | Monoclonal |
| Immunogen: | A near-full length cDNA gene (cytoplasmic C-terminus partially truncated) delivered by DNA immunization |
| Formulation: | PBS with 50% glycerol and 0.05% azide |
| Concentration: | 0.5mg/ml |
| Purification: | Purified from mouse ascites fluids or tissue culture supernatant by affinity chromatography (protein A/G) |
| Conjugation: | Unconjugated |
| Storage: | Store at -20°C as received. |
| Stability: | Stable for 12 months from date of receipt. |
| Gene Name: | C-X-C motif chemokine receptor 4 |
| Database Link: | NP_003458 Entrez Gene 7852 Human P61073 |
| Background: | SDF1 receptor |
| Synonyms: | CD184; D2S201E; FB22; HM89; HSY3RR; LAP-3; LAP3; LCR1; LESTR; NPY3R; NPYR; NPYRL; NPY3R; WHIM |
| Note: | Epitope extracellular loop 2. This antibody was generated by SDIX's Genomic Antibody Technology ® (GAT). Learn about GAT |
| Protein Families: | Druggable Genome, ES Cell Differentiation/IPS, GPCR, Transmembrane |



[View online »](#)

Protein Pathways: Axon guidance, Chemokine signaling pathway, Cytokine-cytokine receptor interaction, Endocytosis, Leukocyte transendothelial migration

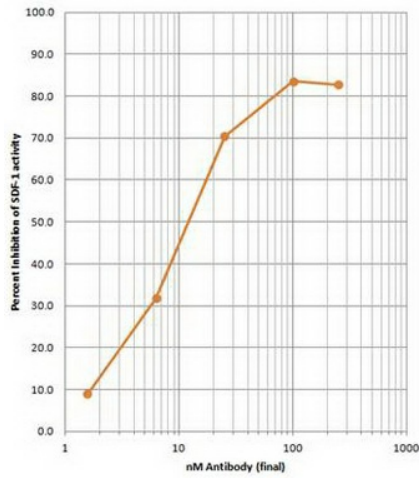
Product images:



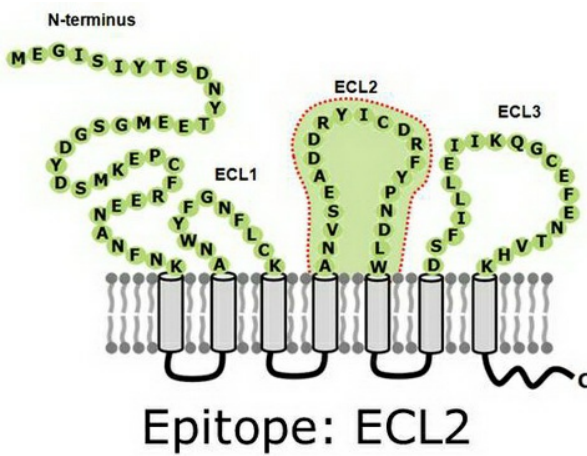
Titration of CXCR4 antibody 772X122 on transfected HEK293F cells in flow cytometry

| Clone name | Flow Cytometry | | | |
|------------|----------------|---------|-------|-----|
| | Jurkat | HEK 293 | Ramos | CEM |
| X122 | +++ | +++ | - | ++ |

Relative staining of different cell types in flow cytometry



Antagonist activity of CXCR4 antibody clone 772X122



Epitopes were defined by homologous scanning mutagenesis using human-mouse CXCR4 chimeras. Note: this method defines the key contact points and the complete set of contacts will likely be broader.