

Product datasheet for **TA591082**

CD20 (MS4A1) Mouse Monoclonal Antibody [Clone ID: 743Y4]

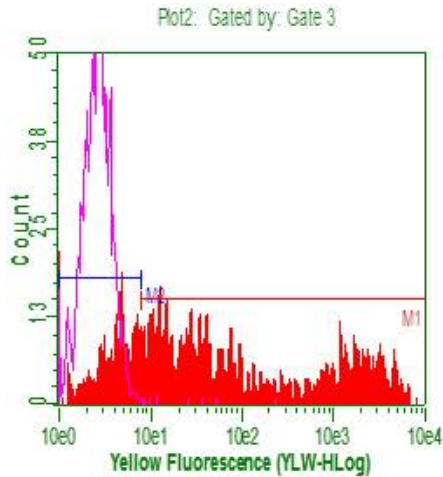
Product data:

Product Type:	Primary Antibodies
Clone Name:	743Y4
Applications:	FC
Recommended Dilution:	Use at 0.1-1ug/ml. Flow , CDC
Reactivity:	Human
Host:	Mouse
Isotype:	IgG2a
Clonality:	Monoclonal
Immunogen:	A full length cDNA gene delivered by DNA immunization
Formulation:	PBS with 50% glycerol and 0.05% azide
Concentration:	0.25mg/ml
Purification:	Purified from mouse ascites fluids or tissue culture supernatant by affinity chromatography (protein A/G)
Conjugation:	Unconjugated
Storage:	Store at -20°C as received.
Stability:	Stable for 12 months from date of receipt.
Gene Name:	membrane spanning 4-domains A1
Database Link:	NP_068769 Entrez Gene 931 Human P11836
Background:	B cell cell surface marker
Synonyms:	B1; Bp35; CD20; CVID5; FMC7; LEU-16; MS4A2; S7
Note:	Epitope INIYN. This antibody was generated by SDIX's Genomic Antibody Technology® (GAT). Learn about GAT
Protein Families:	Druggable Genome, Transmembrane
Protein Pathways:	Hematopoietic cell lineage

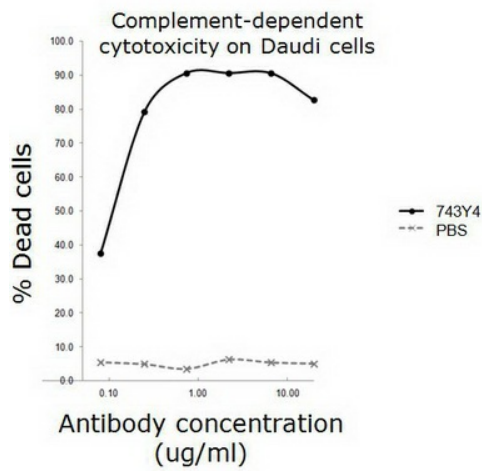


[View online »](#)

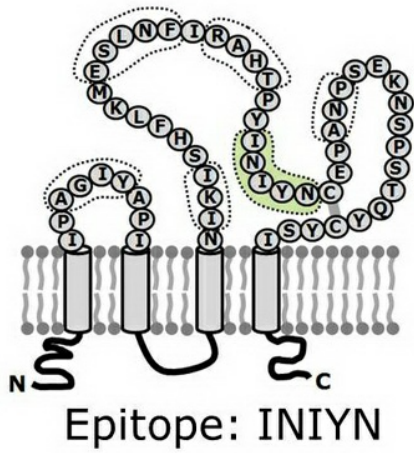
Product images:



Flow cytometry on CD20 transfected HEK283F cells. Red filled graph is staining with the CD20 antibody, the unfilled pink graph is a cell transfected with an unrelated gene.



Complement-dependent cytotoxicity of anti-CD20 antibody (TA591082, clone 743Y4) on Daudi cells



Epitopes were defined by homologous scanning mutagenesis using human-mouse CD20 chimeras. Note: this method defines the key contact points (green) and the complete set of contacts will likely be broader.