

Product datasheet for **TA591080**

CD20 (MS4A1) Mouse Monoclonal Antibody [Clone ID: 743X78]

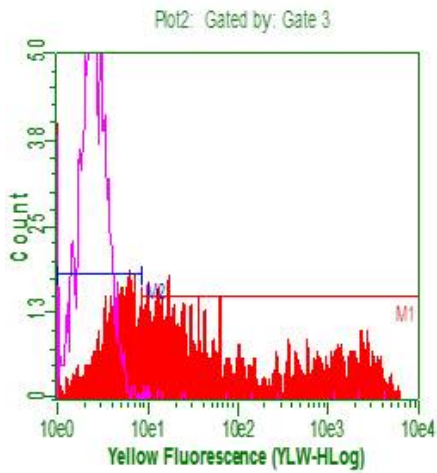
Product data:

| | |
|-----------------------|------------------------------------------------------------------------------------------------------------------------------|
| Product Type: | Primary Antibodies |
| Clone Name: | 743X78 |
| Applications: | FC |
| Recommended Dilution: | Use at 0.1-1ug/ml. Flow , CDC |
| Reactivity: | Human |
| Host: | Mouse |
| Isotype: | IgG2a |
| Clonality: | Monoclonal |
| Immunogen: | A full length cDNA gene delivered by DNA immunization |
| Formulation: | PBS with 50% glycerol and 0.05% azide |
| Concentration: | 0.25mg/ml |
| Purification: | Purified from mouse ascites fluids or tissue culture supernatant by affinity chromatography (protein A/G) |
| Conjugation: | Unconjugated |
| Storage: | Store at -20°C as received. |
| Stability: | Stable for 12 months from date of receipt. |
| Gene Name: | membrane spanning 4-domains A1 |
| Database Link: | NP_068769 Entrez Gene 931 Human P11836 |
| Background: | B cell cell surface marker |
| Synonyms: | B1; Bp35; CD20; CVID5; FMC7; LEU-16; MS4A2; S7 |
| Note: | Epitope INIYN-ANP. This antibody was generated by SDIX's Genomic Antibody Technology® (GAT). Learn about GAT |
| Protein Families: | Druggable Genome, Transmembrane |
| Protein Pathways: | Hematopoietic cell lineage |

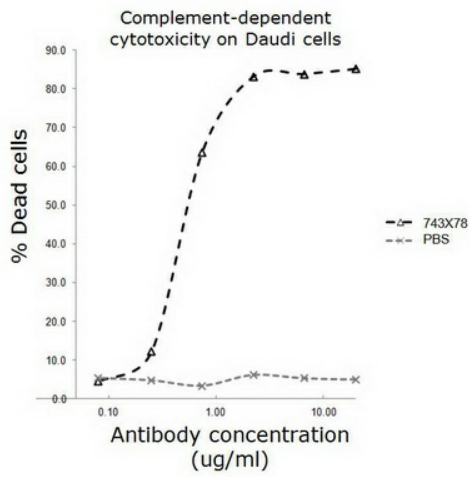


[View online »](#)

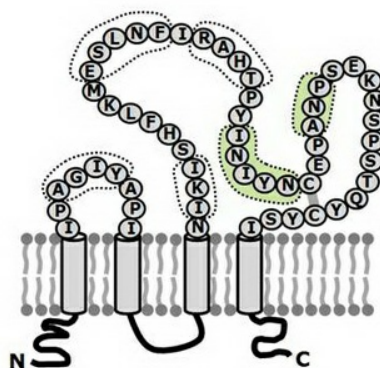
Product images:



Flow cytometry on CD20 transfected HEK283F cells. Red filled graph is staining with the CD20 antibody, the unfilled pink graph is a cell transfected with an unrelated gene.



Complement-dependent cytotoxicity of anti-CD20 antibody (TA591080, clone 743X78) on Daudi cells



Epitope: INIYN-ANP

Epitopes were defined by homologous scanning mutagenesis using human-mouse CD20 chimeras. Note: this method defines the key contact points (green) and the complete set of contacts will likely be broader.