

## Product datasheet for **TA591068S**

### Asialoglycoprotein Receptor 1 (ASGR1) Rabbit Monoclonal Antibody [Clone ID: OTIR1H6]

#### Product data:

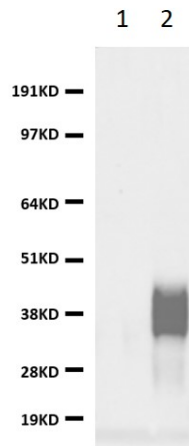
Product Type:	Primary Antibodies
Clone Name:	OTIR1H6
Applications:	WB
Recommended Dilution:	WB1:500
Reactivity:	Human
Host:	Rabbit
Isotype:	IgG
Clonality:	Monoclonal
Immunogen:	Synthetic peptide 200-260aa
Formulation:	PBS (PH 7.3) containing 1% BSA, 50% glycerol and 0.02% sodium azide.
Concentration:	1mg/ml
Purification:	Purified from cell culture supernatant by affinity chromatography (protein A/G)
Conjugation:	Unconjugated
Storage:	Shipped at -20°C or with ice packs, Upon delivery store at -20°C. Dilute in PBS(pH7.3) if necessary. Stable for 12 months from date of receipt. Avoid repeated freeze-thaws.
Stability:	Stable for 12 months from date of receipt
Predicted Protein Size:	40 kDa
Gene Name:	asialoglycoprotein receptor 1
Database Link:	<a href="#">Entrez Gene 432 Human P07306</a>



[View online »](#)

**Background:**

This gene encodes a subunit of the asialoglycoprotein receptor. This receptor is a transmembrane protein that plays a critical role in serum glycoprotein homeostasis by mediating the endocytosis and lysosomal degradation of glycoproteins with exposed terminal galactose or N-acetylgalactosamine residues. The asialoglycoprotein receptor may facilitate hepatic infection by multiple viruses including hepatitis B, and is also a target for liver-specific drug delivery. The asialoglycoprotein receptor is a hetero-oligomeric protein composed of major and minor subunits, which are encoded by different genes. The protein encoded by this gene is the more abundant major subunit. Alternatively spliced transcript variants encoding multiple isoforms have been observed for this gene.

**Product images:**

HEK293T cells were transfected with the pCMV6-ENTRY control (lane 1) or pCMV6-ENTRY ASGR1 ([LY400631], lane 2). Equivalent amounts of cell lysates (5 ug per lane) were separated by SDS-PAGE and immunoblotted with anti-ASGR1 ([TA591068], 1:500).