

Product datasheet for **TA591063S**

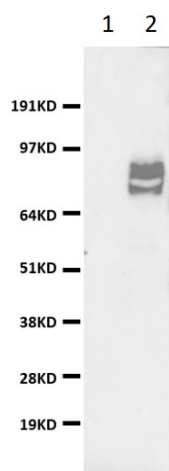
OPA1 Rabbit Monoclonal Antibody [Clone ID: OTIR3D5]

Product data:

Product Type:	Primary Antibodies
Clone Name:	OTIR3D5
Applications:	WB
Recommended Dilution:	WB1:500
Reactivity:	Human
Host:	Rabbit
Isotype:	IgG
Clonality:	Monoclonal
Immunogen:	Full length protein
Formulation:	PBS (PH 7.3) containing 1% BSA, 50% glycerol and 0.02% sodium azide.
Concentration:	1mg/ml
Purification:	Purified from cell culture supernatant by affinity chromatography (protein A/G)
Conjugation:	Unconjugated
Storage:	Shipped at -20°C or with ice packs, Upon delivery store at -20°C. Dilute in PBS(pH7.3) if necessary. Stable for 12 months from date of receipt. Avoid repeated freeze-thaws.
Stability:	Stable for 12 months from date of receipt
Predicted Protein Size:	112 kDa
Gene Name:	OPA1 mitochondrial dynamin like GTPase
Database Link:	Entrez Gene 4976 Human O60313
Background:	This gene product is a nuclear-encoded mitochondrial protein with similarity to dynamin-related GTPases. It is a component of the mitochondrial network. Mutations in this gene have been associated with optic atrophy type 1, which is a dominantly inherited optic neuropathy resulting in progressive loss of visual acuity, leading in many cases to legal blindness. Multiple transcript variants encoding different isoforms have been found for this gene.


[View online »](#)

Product images:



HEK293T cells were transfected with the pCMV6-ENTRY control (lane 1) or pCMV6-ENTRY OPA1 ([RC209919], lane 2) cDNA for 48 hrs and lysed. Equivalent amounts of cell lysates (5 ug per lane) were separated by SDS-PAGE and immunoblotted with anti-OPA1 ([TA591063], 1:500).