

## Product datasheet for **TA591053S**

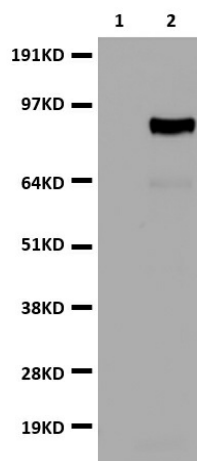
### SP1 Rabbit Monoclonal Antibody [Clone ID: OTIR5H7]

#### Product data:

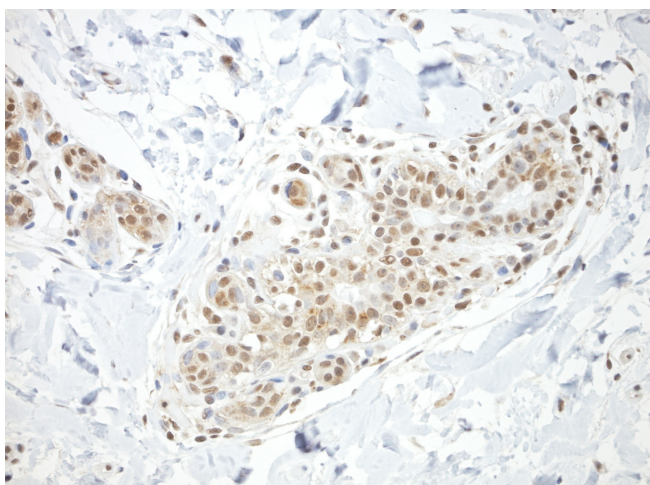
Product Type:	Primary Antibodies
Clone Name:	OTIR5H7
Applications:	IHC, WB
Recommended Dilution:	WB1:500, IHC 1:100 to 1:200
Reactivity:	Human
Host:	Rabbit
Isotype:	IgG
Clonality:	Monoclonal
Immunogen:	Full length protein
Formulation:	PBS (PH 7.3) containing 1% BSA, 50% glycerol and 0.02% sodium azide.
Concentration:	1mg/ml
Purification:	Purified from cell culture supernatant by affinity chromatography (protein A/G)
Conjugation:	Unconjugated
Storage:	Shipped at -20°C or with ice packs, Upon delivery store at -20°C. Dilute in PBS(pH7.3) if necessary. Stable for 12 months from date of receipt. Avoid repeated freeze-thaws.
Predicted Protein Size:	86 kDa
Gene Name:	Sp1 transcription factor
Database Link:	<a href="#">Entrez Gene 6667 Human P08047</a>
Background:	The protein encoded by this gene is a zinc finger transcription factor that binds to GC-rich motifs of many promoters. The encoded protein is involved in many cellular processes; including cell differentiation; cell growth; apoptosis; immune responses; response to DNA damage; and chromatin remodeling. Post-translational modifications such as phosphorylation; acetylation; glycosylation; and proteolytic processing significantly affect the activity of this protein; which can be an activator or a repressor. Three transcript variants encoding different isoforms have been found for this gene.



[View online »](#)

**Product images:**

HEK293T cells were transfected with the pCMV6-ENTRY control (lane 1) or pCMV6-ENTRY SP1 [RC209154], lane 2) cDNA for 48 hrs and lysed. Equivalent amounts of cell lysates (5 ug per lane) were separated by SDS-PAGE and immunoblotted with anti-SP1 ([TA591053], 1:500).



Immunohistochemical staining of paraffin-embedded normal breast using anti-SP1 C/N [TA591053] clone OTI5H7 rabbit monoclonal antibody. HIER Accel buffer pH8.7 ([B22-125]) at 110C for 10 min, anti-SP1 diluted to 1:100. Detection was done with Polink1 Rabbit C/N [D13-18] with DAB Kit. Image 40x magnification.