

Product datasheet for **TA591052S**

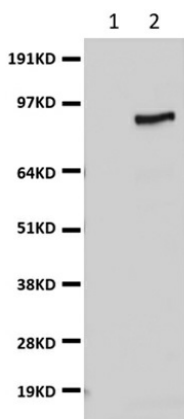
SP1 Rabbit Monoclonal Antibody [Clone ID: OTIR3E2]

Product data:

Product Type:	Primary Antibodies
Clone Name:	OTIR3E2
Applications:	WB
Recommended Dilution:	WB1:500
Reactivity:	Human
Host:	Rabbit
Isotype:	IgG
Clonality:	Monoclonal
Immunogen:	Full length protein
Formulation:	PBS (PH 7.3) containing 1% BSA, 50% glycerol and 0.02% sodium azide.
Concentration:	1mg/ml
Purification:	Purified from cell culture supernatant by affinity chromatography (protein A/G)
Conjugation:	Unconjugated
Storage:	Shipped at -20°C or with ice packs, Upon delivery store at -20°C. Dilute in PBS(pH7.3) if necessary. Stable for 12 months from date of receipt. Avoid repeated freeze-thaws.
Predicted Protein Size:	86 kDa
Gene Name:	Sp1 transcription factor
Database Link:	Entrez Gene 6667 Human P08047
Background:	The protein encoded by this gene is a zinc finger transcription factor that binds to GC-rich motifs of many promoters. The encoded protein is involved in many cellular processes; including cell differentiation; cell growth; apoptosis; immune responses; response to DNA damage; and chromatin remodeling. Post-translational modifications such as phosphorylation; acetylation; glycosylation; and proteolytic processing significantly affect the activity of this protein; which can be an activator or a repressor. Three transcript variants encoding different isoforms have been found for this gene.



[View online »](#)

Product images:

HEK293T cells were transfected with the pCMV6-ENTRY control (lane 1) or pCMV6-ENTRY SP1 ([RC209154], lane 2) cDNA for 48 hrs and lysed. Equivalent amounts of cell lysates (5 ug per lane) were separated by SDS-PAGE and immunoblotted with anti-SP1 ([TA591052], 1:500).