

## Product datasheet for **TA591049S**

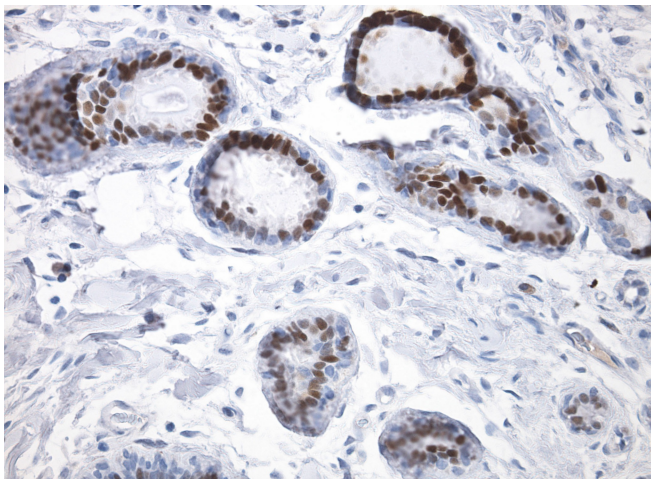
### Estrogen Receptor 1 (ESR1) Rabbit Monoclonal Antibody [Clone ID: OTIR3C2]

#### Product data:

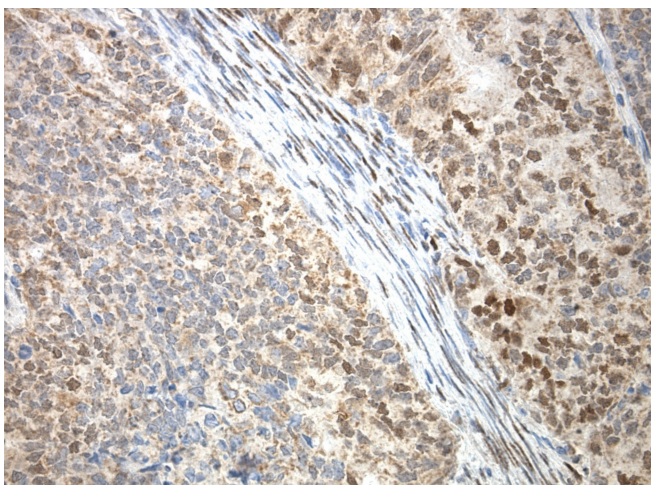
Product Type:	Primary Antibodies
Clone Name:	OTIR3C2
Applications:	ELISA, IHC
Reactivity:	Human, Mouse, Rat
Host:	Rabbit
Isotype:	IgG
Clonality:	Monoclonal
Immunogen:	Synthetic peptide (the amino acid sequence is considered to be commercially sensitive) within Human ESR1 (NP_000116). The exact sequence is proprietary.
Formulation:	PBS (pH 7.3) containing 1% BSA, 50% glycerol and 0.02% sodium azide.
Concentration:	Lot dependent; please refer to CoA along with shipment
Purification:	Purified from mouse ascites fluids or tissue culture supernatant by affinity chromatography (protein A/G)
Conjugation:	Unconjugated
Storage:	Shipped at -20°C or with ice packs, Upon delivery store at -20°C. Dilute in PBS(pH7.3) if necessary. Stable for 12 months from date of receipt. Avoid repeated freeze-thaws.
Predicted Protein Size:	60 kDa
Gene Name:	estrogen receptor 1
Database Link:	<a href="#">NP_000116</a> <a href="#">Entrez Gene 13982 Mouse</a> <a href="#">Entrez Gene 24890 Rat</a> <a href="#">Entrez Gene 2099 Human</a> <a href="#">P03372</a>
Synonyms:	ER; Era; ESR; ESRA; ESTRR; NR3A1
Protein Families:	Druggable Genome, Nuclear Hormone Receptor, Transcription Factors



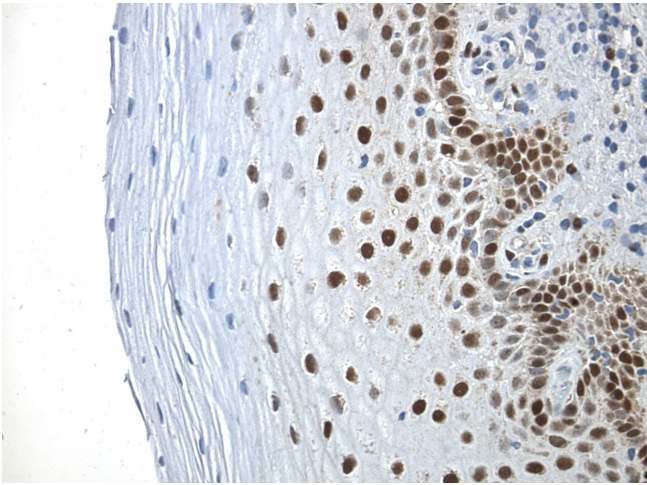
[View online »](#)

**Product images:**

Immunohistochemical staining of paraffin-embedded human adjacent normal breast using rabbit monoclonal anti-estrogen receptor (ER or ESR1) clone OTIR3C2 monoclonal antibody @ 1:100 with detection kit Rabbit Polink1 (D13) HRP and DAB chromogen ([TA591049]; requires heat-induced epitope retrieval with Tris/ EDTA buffer (ACCEL), pH8.7 using BioCare Decloaker)



Immunohistochemical staining of paraffin-embedded human endometrial cancer using rabbit monoclonal anti-estrogen receptor (ER or ESR1) clone OTIR3C2 monoclonal antibody @ 1:100 with detection kit Rabbit Polink1 (D13) HRP and DAB chromogen ([TA591049]; requires heat-induced epitope retrieval with Tris/ EDTA buffer (ACCEL), pH8.7 using BioCare Decloaker)



Immunohistochemical staining of paraffin-embedded human cervix using rabbit monoclonal anti-estrogen receptor (ER or ESR1) clone OTIR3C2 monoclonal antibody @ 1:100 with detection kit Rabbit Polink1 (D13) HRP and DAB chromogen ([TA591049]; requires heat-induced epitope retrieval with Tris/ EDTA buffer (ACCEL), pH8.7 using BioCare Decloaker)