

## Product datasheet for TA591048

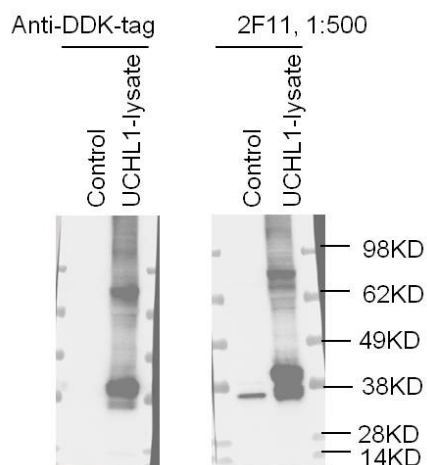
### PGP9.5 (UCHL1) Rabbit Monoclonal Antibody [Clone ID: OTIR2F11]

#### Product data:

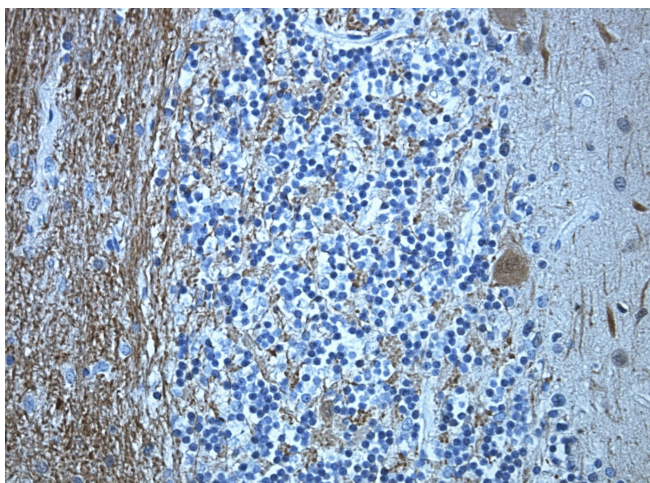
Product Type:	Primary Antibodies
Clone Name:	OTIR2F11
Applications:	ELISA, IHC, WB
Reactivity:	Human, Mouse, Rat
Host:	Rabbit
Isotype:	IgG
Clonality:	Monoclonal
Immunogen:	Synthetic peptide (the amino acid sequence is considered to be commercially sensitive) within Human UCHL1 (NP_004172). The exact sequence is proprietary.
Formulation:	PBS (pH 7.3) containing 1% BSA, 50% glycerol and 0.02% sodium azide.
Concentration:	Lot dependent; please refer to CoA along with shipment
Purification:	Purified from mouse ascites fluids or tissue culture supernatant by affinity chromatography (protein A/G)
Conjugation:	Unconjugated
Storage:	Shipped at -20°C or with ice packs, Upon delivery store at -20°C. Dilute in PBS(pH7.3) if necessary. Stable for 12 months from date of receipt. Avoid repeated freeze-thaws.
Predicted Protein Size:	25 kDa
Gene Name:	ubiquitin C-terminal hydrolase L1
Database Link:	<a href="#">NP_004172</a> <a href="#">Entrez Gene 22223 Mouse</a> <a href="#">Entrez Gene 29545 Rat</a> <a href="#">Entrez Gene 7345 Human</a> <a href="#">P09936</a>
Synonyms:	HEL-117; HEL-S-53; NDGOA; PARK5; PGP 9.5; PGP9.5; PGP95; SPG79; Uch-L1
Protein Families:	Druggable Genome, Protease
Protein Pathways:	Parkinson's disease


[View online »](#)

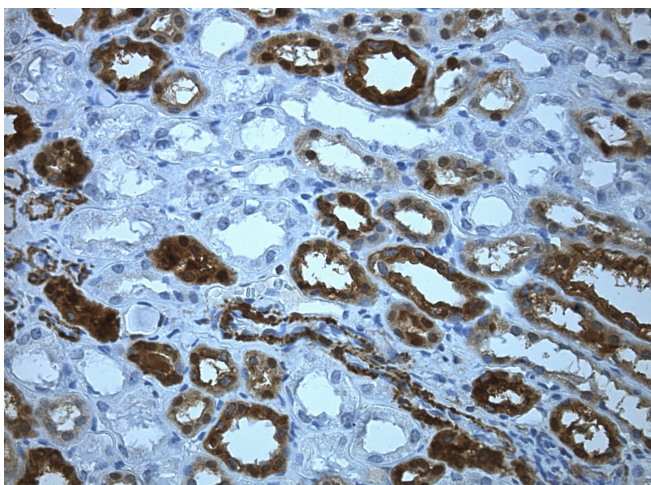
## Product images:



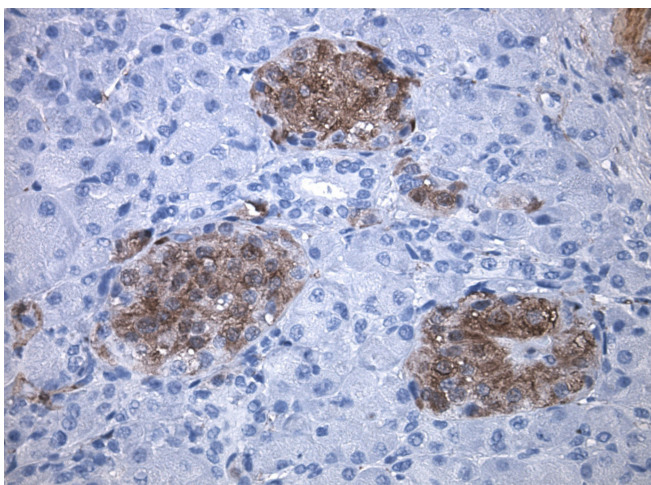
Western blot analysis of extracts from 293-6E cell line (left lane) and 293-6E cells transfected with UCHL1 gene (right lane), using anti- UCHL1 rabbit monoclonal antibody (TA591048) at 1:500 dilution.



Immunohistochemical staining of paraffin-embedded human brain cerebellum using rabbit monoclonal anti-UCHL1 clone OTIR2F11 monoclonal antibody @ 1:100 with detection kit Rabbit Polink1 (D13) HRP and DAB chromogen (TA591048; heat-induced epitope retrieval with Tris/ EDTA buffer, pH9.0 using Decloaker instrument). Heat-induced epitope retrieval by EDTA solution buffer pH 8.0 at 120°C for 3 min.



Immunohistochemical staining of paraffin-embedded human normal kidney using rabbit monoclonal anti-UCHL1 clone OTIR2F11 monoclonal antibody @ 1:100 with detection kit Rabbit Polink1 (D13) HRP and DAB chromogen (TA591048; heat-induced epitope retrieval with Tris/ EDTA buffer, pH9.0 using Decloaker instrument). Heat-induced epitope retrieval by EDTA solution buffer pH 8.0 at 120°C for 3 min.



Immunohistochemical staining of paraffin-embedded human normal pancreas using rabbit monoclonal anti-UCHL1 clone OTIR2F11 monoclonal antibody @ 1:100 with detection kit Rabbit Polink1 (D13) HRP and DAB chromogen (TA591048; heat-induced epitope retrieval with Tris/ EDTA buffer, pH9.0 using Decloaker instrument). Heat-induced epitope retrieval by EDTA solution buffer pH 8.0 at 120°C for 3 min.