

## Product datasheet for **TA591047**

### Wilms Tumor Protein (WT1) Rabbit Monoclonal Antibody [Clone ID: OTIR5F11]

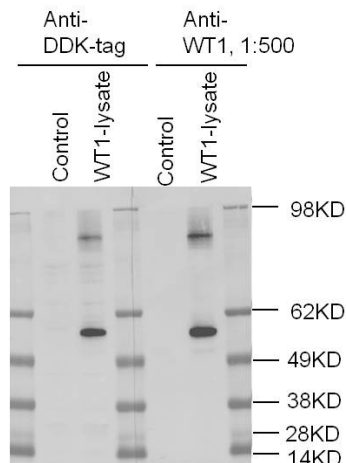
#### Product data:

Product Type:	Primary Antibodies
Clone Name:	OTIR5F11
Applications:	ELISA, IHC, WB
Reactivity:	Human, Mouse, Rat
Host:	Rabbit
Isotype:	IgG
Clonality:	Monoclonal
Immunogen:	Synthetic peptide (the amino acid sequence is considered to be commercially sensitive) within Human WT1 (NP_000369). The exact sequence is proprietary.
Formulation:	PBS (pH 7.3) containing 1% BSA, 50% glycerol and 0.02% sodium azide.
Concentration:	Lot dependent; please refer to CoA along with shipment
Purification:	Purified from mouse ascites fluids or tissue culture supernatant by affinity chromatography (protein A/G)
Conjugation:	Unconjugated
Storage:	Shipped at -20°C or with ice packs, Upon delivery store at -20°C. Dilute in PBS(pH7.3) if necessary. Stable for 12 months from date of receipt. Avoid repeated freeze-thaws.
Predicted Protein Size:	56 kDa
Gene Name:	WT1 transcription factor
Database Link:	<a href="#">NP_000369</a> <a href="#">Entrez Gene 22431 Mouse</a> <a href="#">Entrez Gene 24883 Rat</a> <a href="#">Entrez Gene 7490 Human</a> <a href="#">P19544</a>
Synonyms:	AWT1; GUD; NPHS4; WAGR; WIT-2; WT33
Protein Families:	Druggable Genome, Transcription Factors

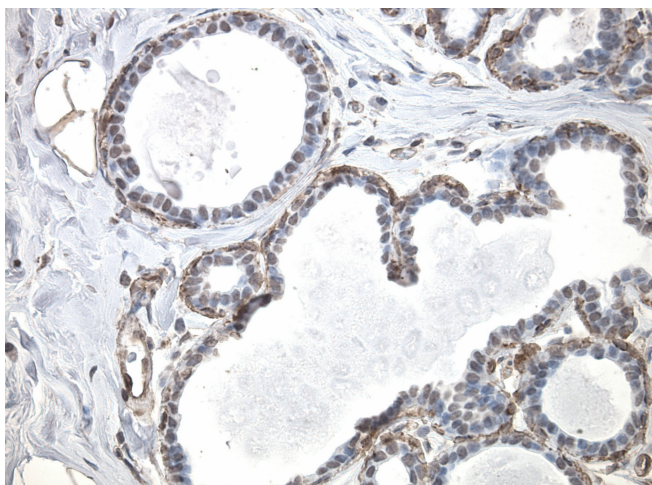


[View online »](#)

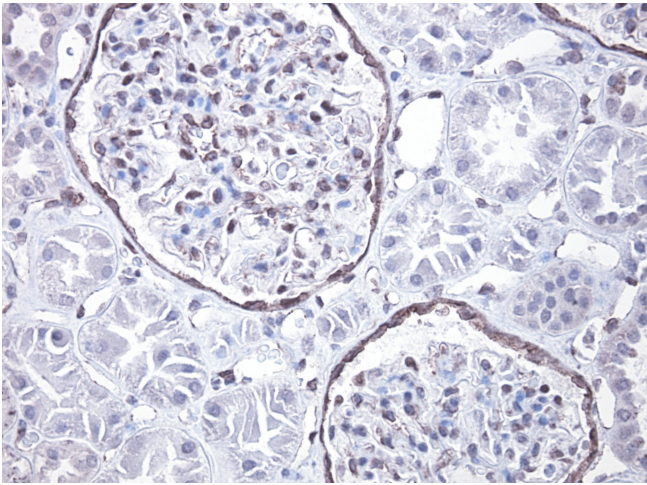
**Product images:**



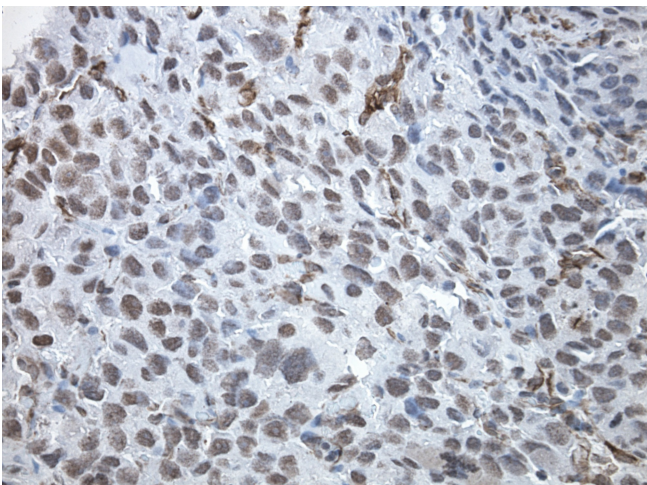
Western blot analysis of extracts from 293-6E cell line (left lane) and 293-6E cells transfected with WT1 gene (right lane), using anti- WT1 rabbit monoclonal antibody (TA591047) at 1:500 dilution.



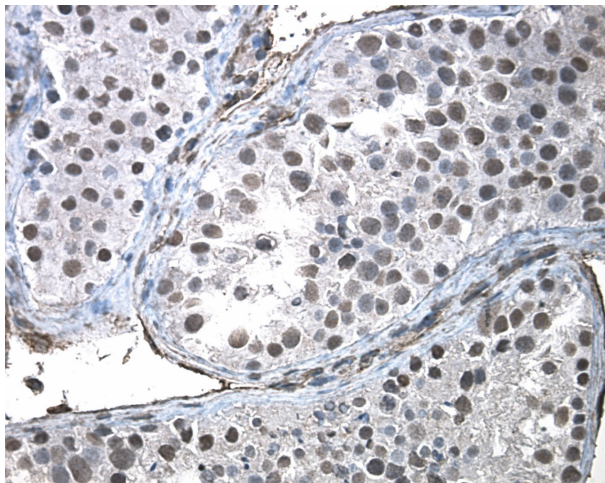
Immunohistochemical staining of paraffin-embedded human adjacent normal breast using rabbit monoclonal anti-WT1 clone OTIR5F11 monoclonal antibody @ 1:200 with detection kit Rabbit Polink1 (D13) HRP and DAB chromogen (TA591047; requires heat-induced epitope retrieval with Tris/ EDTA buffer (ACCEL), pH8.7 using BioCare Decloaker)



Immunohistochemical staining of paraffin-embedded human adjacent normal kidney using rabbit monoclonal anti-WT1 clone OTIR5F11 monoclonal antibody @ 1:200 with detection kit Rabbit Polink1 (D13) HRP and DAB chromogen (TA591047; requires heat-induced epitope retrieval with Tris/ EDTA buffer (ACCEL), pH8.7 using BioCare Decloaker)

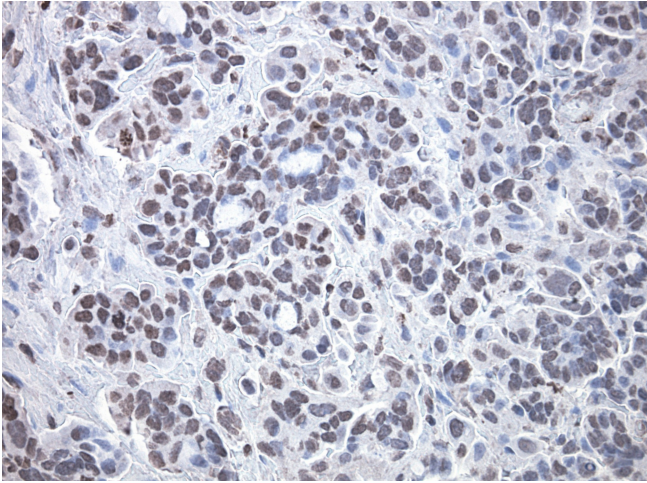


Immunohistochemical staining of paraffin-embedded human endometrial carcinoma using rabbit monoclonal anti-WT1 clone OTIR5F11 monoclonal antibody @ 1:200 with detection kit Rabbit Polink1 (D13) HRP and DAB chromogen (TA591047; requires heat-induced epitope retrieval with Tris/ EDTA buffer (ACCEL), pH8.7 using BioCare Decloaker)



Immunohistochemical staining of paraffin-embedded human testies using rabbit monoclonal anti-WT1 clone OTIR5F11 monoclonal antibody @ 1:200 with detection kit Rabbit Polink1 (D13) HRP and DAB chromogen (TA591047; requires heat-induced epitope retrieval with Tris/ EDTA buffer (ACCEL), pH8.7 using BioCare Decloaker)





Immunohistochemical staining of paraffin-embedded human ovarian carcinoma using rabbit monoclonal anti-WT1 clone OTIR5F11 monoclonal antibody @ 1:100 with detection kit Rabbit Polink1 (D13) HRP and DAB chromogen (TA591047; requires heat-induced epitope retrieval with Tris/ EDTA buffer (ACCEL), pH8.7 using BioCare Decloaker)