

## Product datasheet for **TA591001S**

### SOX2 Rabbit Monoclonal Antibody [Clone ID: OR-4F2]

#### Product data:

Product Type:	Primary Antibodies
Clone Name:	OR-4F2
Applications:	WB
Recommended Dilution:	WB: 1:500-1:2000
Reactivity:	Human, Mouse, Rat
Host:	Rabbit
Isotype:	IgG
Clonality:	Monoclonal
Immunogen:	Synthetic peptide (the amino acid sequence is considered to be commercially sensitive) within Human SOX2 ( NP_003097). The exact sequence is proprietary.
Formulation:	PBS (pH 7.3) containing 1% BSA, 50% glycerol and 0.02% sodium azide.
Purification:	Purified from mouse ascites fluids or tissue culture supernatant by affinity chromatography (protein A/G)
Conjugation:	Unconjugated
Storage:	Store at -20°C as received.
Stability:	Stable for 12 months from date of receipt.
Predicted Protein Size:	34.1 kDa
Gene Name:	SRY-box transcription factor 2
Database Link:	<a href="#">NP_003097</a> <a href="#">Entrez Gene 20674 Mouse</a> <a href="#">Entrez Gene 499593 Rat</a> <a href="#">Entrez Gene 6657 Human</a> <a href="#">P48431</a>
Background:	This intronless gene encodes a member of the SRY-related HMG-box (SOX) family of transcription factors involved in the regulation of embryonic development and in the determination of cell fate. The product of this gene is required for stem-cell maintenance in the central nervous system, and also regulates gene expression in the stomach. Mutations in this gene have been associated with optic nerve hypoplasia and with syndromic microphthalmia, a severe form of structural eye malformation. This gene lies within an intron of another gene called SOX2 overlapping transcript (SOX2OT). [provided by RefSeq, Jul 2008]

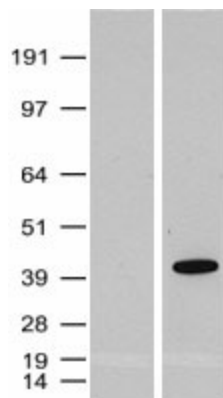


[View online »](#)

**Synonyms:** ANOP3; MCOPS3

**Protein Families:** Adult stem cells, Cancer stem cells, Embryonic stem cells, ES Cell Differentiation/IPS, Induced pluripotent stem cells, Transcription Factors

**Product images:**



HEK293T cells were transfected with the pCMV6-ENTRY control (Left lane) or pCMV6-ENTRY SOX2 ([RC200757], Right lane) cDNA for 48 hrs and lysed. Equivalent amounts of cell lysates (5 ug per lane) were separated by SDS-PAGE and immunoblotted with anti-SOX2 (T. Positive lysates [LY401083] (100ug) and [LC401083] (20ug) can be purchased separately from OriGene.