

Product datasheet for **TA590860**

FDCSP Rabbit Polyclonal Antibody

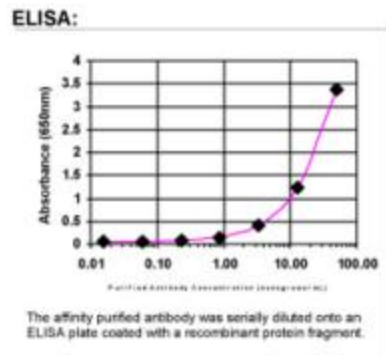
Product data:

Product Type:	Primary Antibodies
Applications:	ELISA, IHC
Recommended Dilution:	ELISA: 1:100-1:2000; IHC: 1:10-1:2000; IHC-P 1:10-1:2000
Reactivity:	Human
Host:	Rabbit
Isotype:	IgG
Clonality:	Polyclonal
Immunogen:	DNA immunization. This antibody is specific for the C Terminus Region of the target protein.
Formulation:	20 mM Potassium Phosphate, 150 mM Sodium Chloride, pH 7.0
Concentration:	0.8mg/ml
Purification:	Purified from mouse ascites fluids or tissue culture supernatant by affinity chromatography (protein A/G)
Conjugation:	Unconjugated
Storage:	Store at -20°C as received.
Stability:	Stable for 12 months from date of receipt.
Gene Name:	follicular dendritic cell secreted protein
Database Link:	NP_694542 Entrez Gene 260436 Human Q8NFU4
Background:	C4orf7 can bind to the surface of B-lymphoma cells, but not T-lymphoma cells, consistent with a function as a secreted mediator acting upon B-cells.
Synonyms:	C4orf7; FDC-SP
Note:	This antibody was generated by SDIX's Genomic Antibody Technology® (GAT). Learn about GAT
Protein Families:	Transmembrane

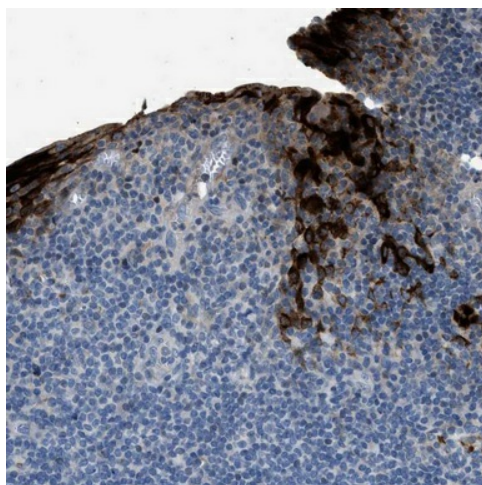


[View online »](#)

Product images:



ELISA: C4orf7 Antibody



Immunohistochemical staining of human tonsil shows strong cytoplasmic positivity in squamous epithelial cells. Antibody dilution: 1:35. Image and statement courtesy of the Human Protein Atlas (HPA).