

Product datasheet for **TA590854**

C16orf61 (CMC2) Rabbit Polyclonal Antibody

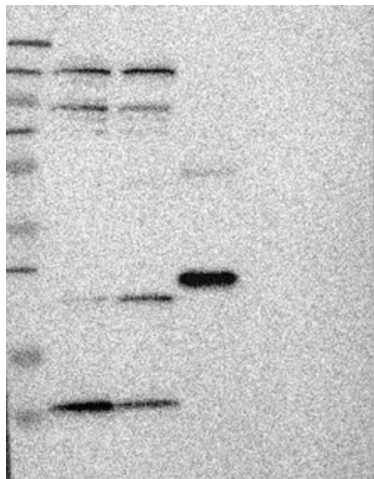
Product data:

Product Type:	Primary Antibodies
Applications:	ELISA, IF, IHC, WB
Recommended Dilution:	WB: 1:500; ELISA: 1:100-1:2000; IHC: 1:100; IF: 1:25
Reactivity:	Human
Host:	Rabbit
Isotype:	IgG
Clonality:	Polyclonal
Immunogen:	DNA immunization. This antibody is specific for the entire range of the target protein.
Formulation:	20 mM Potassium Phosphate, 150 mM Sodium Chloride, pH 7.0
Concentration:	1.17153 mg/ml
Purification:	Purified from mouse ascites fluids or tissue culture supernatant by affinity chromatography (protein A/G)
Conjugation:	Unconjugated
Storage:	Store at -20°C as received.
Stability:	Stable for 12 months from date of receipt.
Gene Name:	C-X9-C motif containing 2
Database Link:	NP_064573 Entrez Gene 56942 Human Q9NRP2
Synonyms:	2310061C15Rik; C16orf61; DC13
Note:	This antibody was generated by SDIX's Genomic Antibody Technology® (GAT). Learn about GAT

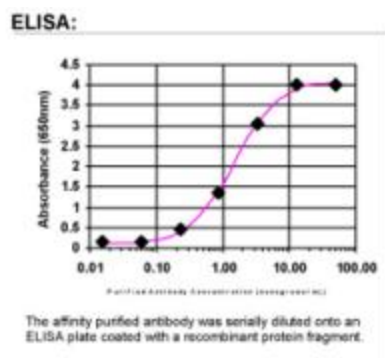


[View online »](#)

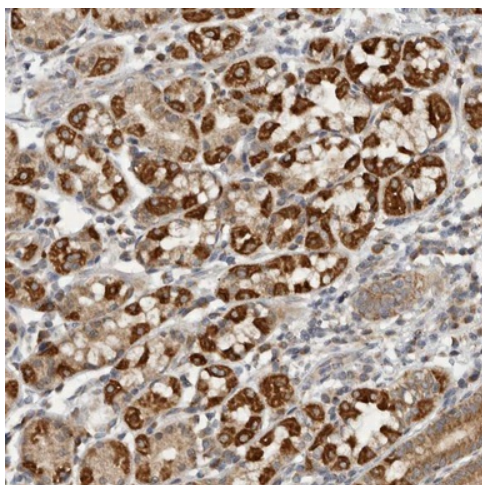
Product images:



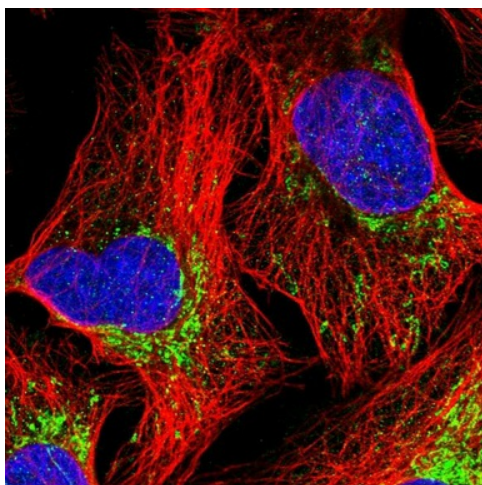
Lane 1: Marker [kDa] 250, 130, 95, 72, 55, 36, 28, 17, 11; Lane 2: RT-4; Lane 3: U-251 MG; Lane 4: Human Plasma; Lane 5: Liver; Lane 6: Tonsil
This validation was performed by Protein Atlas and the presentation of data is for informational purposes only.



ELISA: C16orf61 Antibody



Immunohistochemical staining of human stomach shows strong cytoplasmic positivity in parietal cells. This validation was performed by Protein Atlas and the presentation of data is for informational purposes only.



Immunofluorescent staining of human cell line U-2 OS shows positivity in mitochondria. This validation was performed by Protein Atlas and the presentation of data is for informational purposes only.