

Product datasheet for **TA590853**

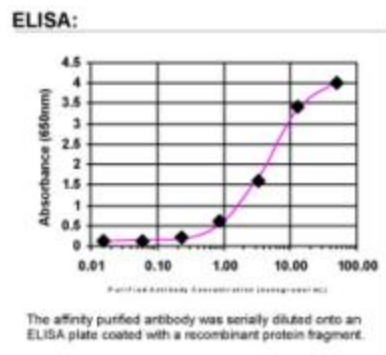
WDR11 Rabbit Polyclonal Antibody

Product data:

| | |
|-----------------------|---|
| Product Type: | Primary Antibodies |
| Applications: | ELISA |
| Recommended Dilution: | WB: 1:5000-1:20000; ELISA: 1:100-1:2000 |
| Reactivity: | Human |
| Host: | Rabbit |
| Isotype: | IgG |
| Clonality: | Polyclonal |
| Immunogen: | DNA immunization. This antibody is specific for the C Terminus Region of the target protein. |
| Formulation: | 20 mM Potassium Phosphate, 150 mM Sodium Chloride, pH 7.0 |
| Concentration: | 1.03723 mg/ml |
| Purification: | Purified from mouse ascites fluids or tissue culture supernatant by affinity chromatography (protein A/G) |
| Conjugation: | Unconjugated |
| Storage: | Store at -20°C as received. |
| Stability: | Stable for 12 months from date of receipt. |
| Gene Name: | WD repeat domain 11 |
| Database Link: | NP_060587 Entrez Gene 55717 Human Q9BZH6 |
| Background: | A chromosomal aberration involving WDR11 is found in a form of glioblastoma. Translocation t(10;19)(q26;q13.3) with ZNF320. |
| Synonyms: | BRWD2; DR11; HH14; SRI1; WDR15 |
| Note: | This antibody was generated by SDIX's Genomic Antibody Technology® (GAT). Learn about GAT |



[View online »](#)

Product images:

ELISA: BRWD2 Antibody