

## Product datasheet for **TA590848**

### PHLPP2 Rabbit Polyclonal Antibody

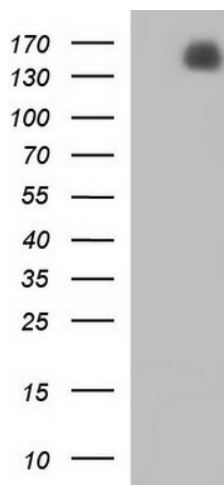
#### Product data:

Product Type:	Primary Antibodies
Applications:	ELISA, WB
Recommended Dilution:	WB 1:20000, ELISA 1:100-1:2000
Reactivity:	Human
Host:	Rabbit
Isotype:	IgG
Clonality:	Polyclonal
Immunogen:	DNA immunization. This antibody is specific for the C Terminus Region of the target protein.
Formulation:	20 mM Potassium Phosphate, 150 mM Sodium Chloride, pH 7.0
Concentration:	1.23431 mg/ml
Purification:	Purified from mouse ascites fluids or tissue culture supernatant by affinity chromatography (protein A/G)
Conjugation:	Unconjugated
Storage:	Store at -20°C as received.
Stability:	Stable for 12 months from date of receipt.
Gene Name:	PH domain and leucine rich repeat protein phosphatase 2
Database Link:	<a href="#">NP_055835</a> <a href="#">Entrez Gene 23035 Human</a> <a href="#">Q6ZVD8</a>
Background:	PHLPP2 contains 21 LRR (leucine rich) repeats, 1 PH domain and 1 PP2C like domain. It is a protein phosphatase that specifically mediates dephosphorylation of AKT1 Ser 473, a protein that regulates the balance between cell survival and apoptosis through a cascade that primarily alters the function of transcription factors that regulate pro and antiapoptotic genes. Dephosphorylation of Ser 473 of AKT1 triggers apoptosis and decrease cell proliferation. PHLPP2 also controls the phosphorylation of AKT3. It binds 2 manganese ions per subunit. There are 3 named isoforms produced by alternative splicing.
Synonyms:	PHLPPL; PPM3B

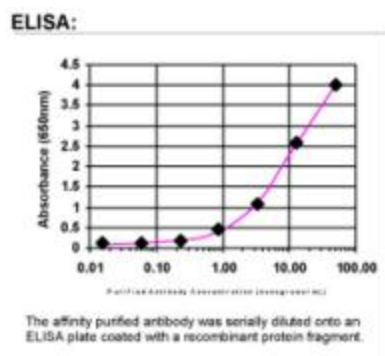
[View online »](#)

**Note:** This antibody was generated by SDIX's Genomic Antibody Technology® (GAT). [Learn about GAT](#)

## Product images:



HEK293T cells were transfected with the pCMV6-ENTRY control (Cat# [PS100001], Left lane) or pCMV6-ENTRY PHLPP2 (Cat# [RC212846], Right lane) cDNA for 48 hrs and lysed. Equivalent amounts of cell lysates (5 ug per lane) were separated by SDS-PAGE and immunoblotted with anti-PHLPP (Cat# TA590848). Positive lysates [LY414856] (100ug) and [LC414856] (20ug) can be purchased separately from OriGene.



ELISA: PHLPP2 Antibody